



TECHNICAL SERVICE BULLETIN

Unable To Update The APIM Or TCU With The FDRS And USB Drive - Module Recovery

22-2150

13 April 2022

This bulletin supersedes 22-2117.

Model:

Ford
2021 Bronco
2021 Edge
2021 F-150
2021 Mustang Mach-E
Lincoln
2021 Nautilus

Summary

This article supersedes TSB 22-2117 to update the Issue, Action, Service Procedure.

Issue: For some 2021 Mustang Mach-E, F-150, Edge, Nautilus and Bronco vehicles technicians may experience the inability to update the accessory protocol interface module (APIM) or telematics control unit (TCU) using the Ford Diagnosis and Repair System (FDRS) and Universal Serial Bus (USB) drive. The PTS – OTA Dashboard on vehicles with this condition may also display multiple APIM and/or TCU updates have failed, and/or a no OTA history message. In addition, on vehicles with this condition, the customer may have reported experiencing a Ford Power-Up software update failure message via the vehicle display and/or FordPass/LincolnWay. This may be due to an internal software error. To correct this condition, follow the Service Procedure to update and/or recover the APIM/TCU.

NOTE: Only 10% of vehicles may require this procedure.

Action: Follow the Service Procedure to correct the condition on vehicles that meet all of the following criteria:

- 2021 Mustang Mach-E/F-150/Edge/Nautilus/Bronco
- Inability to update the APIM and/or TCU using the FDRS and USB drive

Special Tool(s)

USB-to-Ethernet adapter: Trendnet TU2-ET100 USB2.0, Trendnet TU3-ETG USB 3.0, Startech USB31000S USB 3.0, UGREEN USB USB 3.0 model no 40321, Amazon Basics USB 3.0 U3-GE-1P. These adapters have been validated through Ford service testing.

Mini B 5 Pin Female Adapter: Rotunda Part# CCMUSB-AF-BF5 or equivalent (Vehicles with USB Media Hub)

USB 2 Cable - Male to Male: Rotunda Part# CCMUSB2-AM-AM-10 or equivalent (All vehicles)

Ethernet cable assembly, obtain locally (All vehicles)

NOTE: Ford has received feedback from technicians that the following USB-to-Ethernet adapters do not work and should not be used: TP-Link USB3 - 10/100/1000, Cable Creations 10/100/1000 USB3, UGREEN USB2 - 10/100, Cable Leader USB 2.0, UGREEN FBA_20256. In the near future, a list of good/bad USB-to-Ethernet adapters will be published on PTS > Service Tips.

Warranty Status: Eligible under provisions of New Vehicle Limited Warranty (NVLW)/Service Part Warranty (SPW)/Special Service Part (SSP)/Extended Service Plan (ESP) coverage. Limits/policies/prior approvals are not altered by a TSB. NVLW/SPW/SSP/ESP coverage limits are determined by the identified causal part and verified using the OASIS part coverage tool.

Labor Times

Description	Operation	Time
-------------	-----------	------

	No.	
Download And Run The Module Repair Application Following The Service Procedure, Includes Time To Access Connector	MT222150	Actual Time

Repair/Claim Coding

Causal Part:	14G670
Condition Code:	04

Service Procedure

NOTE: Administrative access on the laptop computer being used is required to perform this procedure. Make sure any antivirus software loaded in the laptop computer is disabled or uninstalled prior to performing this procedure.

NOTE: Use only a wireless connection for internet access as this application requires the use of the laptop computer ethernet port during the module recovery procedure. Verify the FDRS is at the latest software level.

1. Connect either the vehicle communications module (VCM) II or VCM III to the data link connector (DLC) and start a vehicle session using the FDRS. Navigate to the toolbox tab on FDRS then select the Multi Module tab. Under the Multi Module tab, download and run the Module Update Repair application.
2. Does the FDRS application provide the message "This vehicle does not qualify for Module Update Repair. The TSB does not apply to this vehicle concern"?
 - (1). Yes - this article does not apply. Continue with following other service publications for APIM and TCU programming and/or the Workshop Manual (WSM) for normal diagnostics.
 - (2). No - proceed to Step 3.
3. Connect a battery charger to the vehicle's 12v battery. Set the charger to maintain the battery at 12.6-13.6 volts.
4. For F-150 vehicles not equipped with a SYNC media hub, proceed to Step 6. Lower trim level F-150 vehicles are instead equipped with pass-through USB ports and do not have a SYNC media hub.
5. For Mustang Mach-E, Nautilus, and F-150 vehicles equipped with a SYNC media hub, access the APIM in-line USB connector.
 - (1). For Mustang Mach-E vehicles, remove the left side floor console front trim panel and disconnect the APIM in-line USB connector. The connector may be concealed by tape. Refer to Step 4 in the WSM Section 501-12 floor console removal. (Figures 1-3)

Figure 1

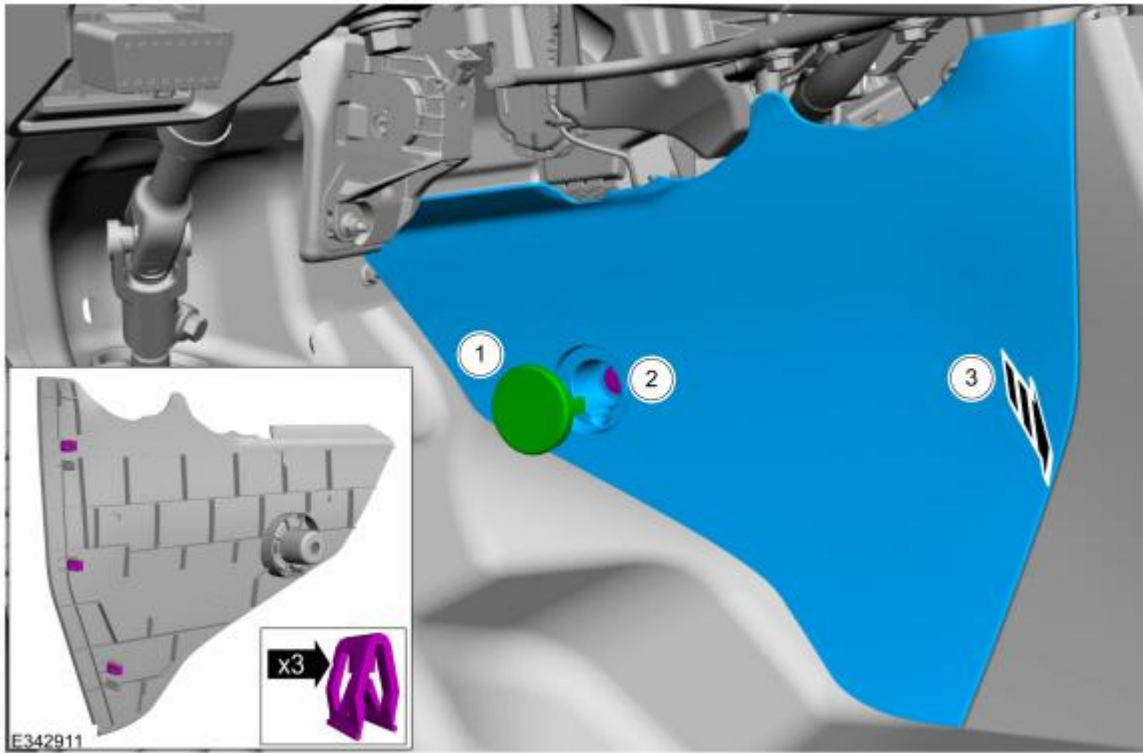


Figure 2

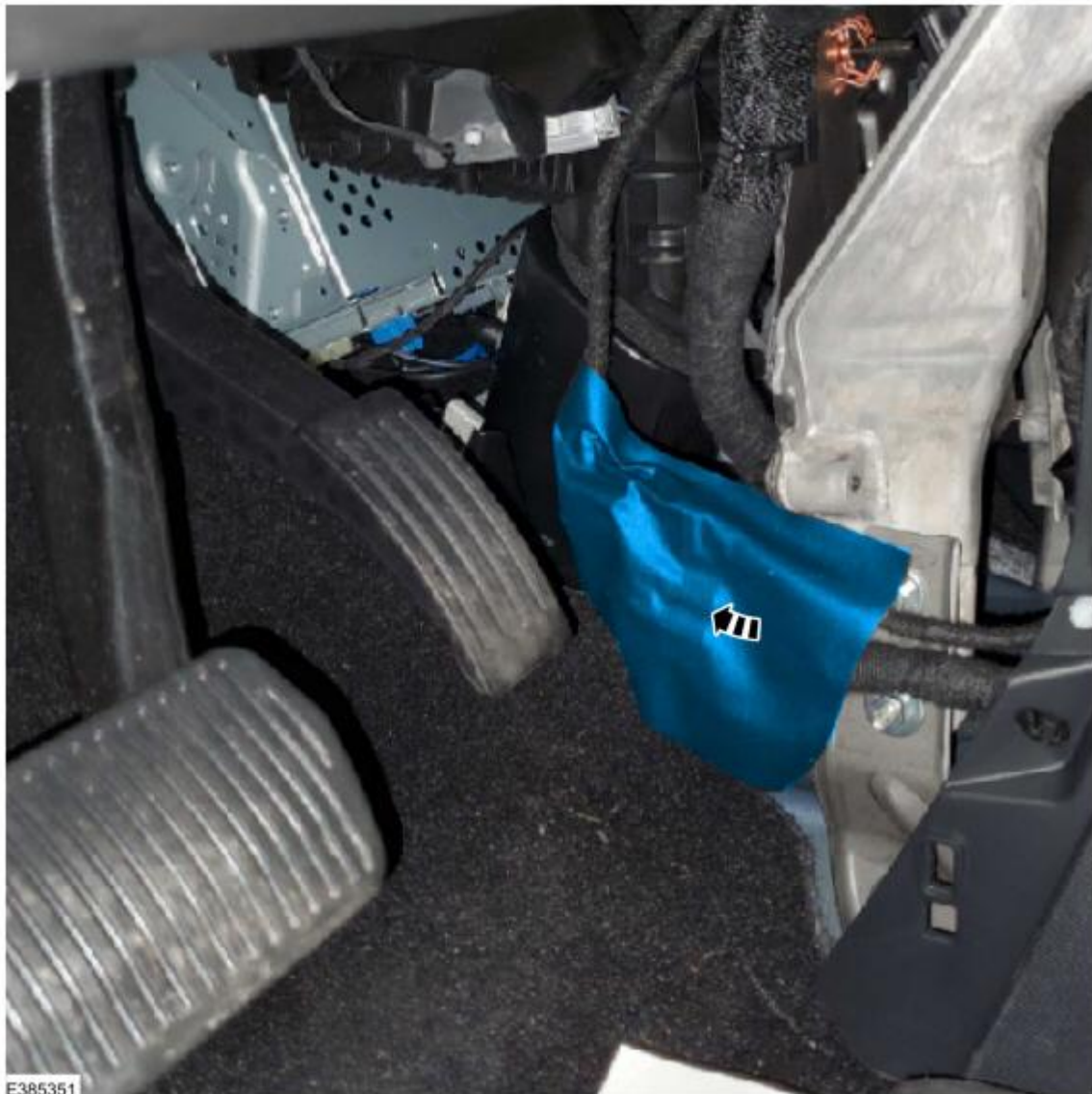


Figure 3



(2). For F-150 vehicles with a SYNC media hub and center console, remove the floor console lower left trim panel and disconnect the APIM in-line USB connector. Refer to Step 4 in WSM, Section 501-12 floor console removal. (Figures 4-6)

Figure 4

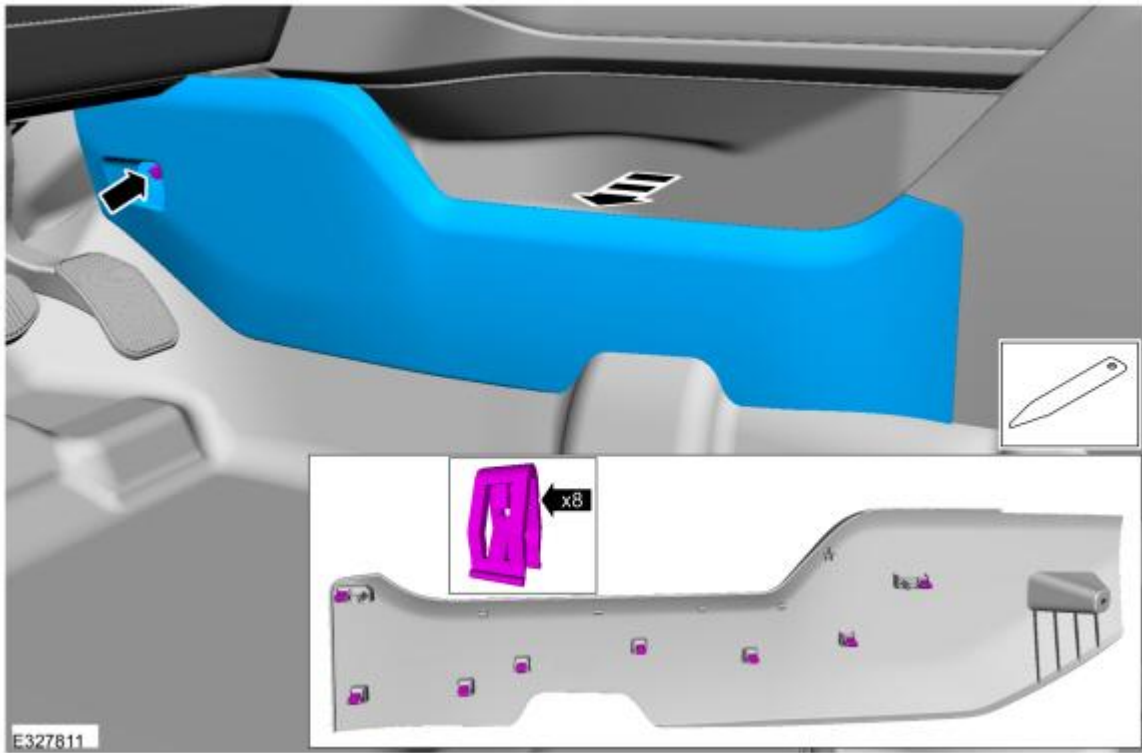
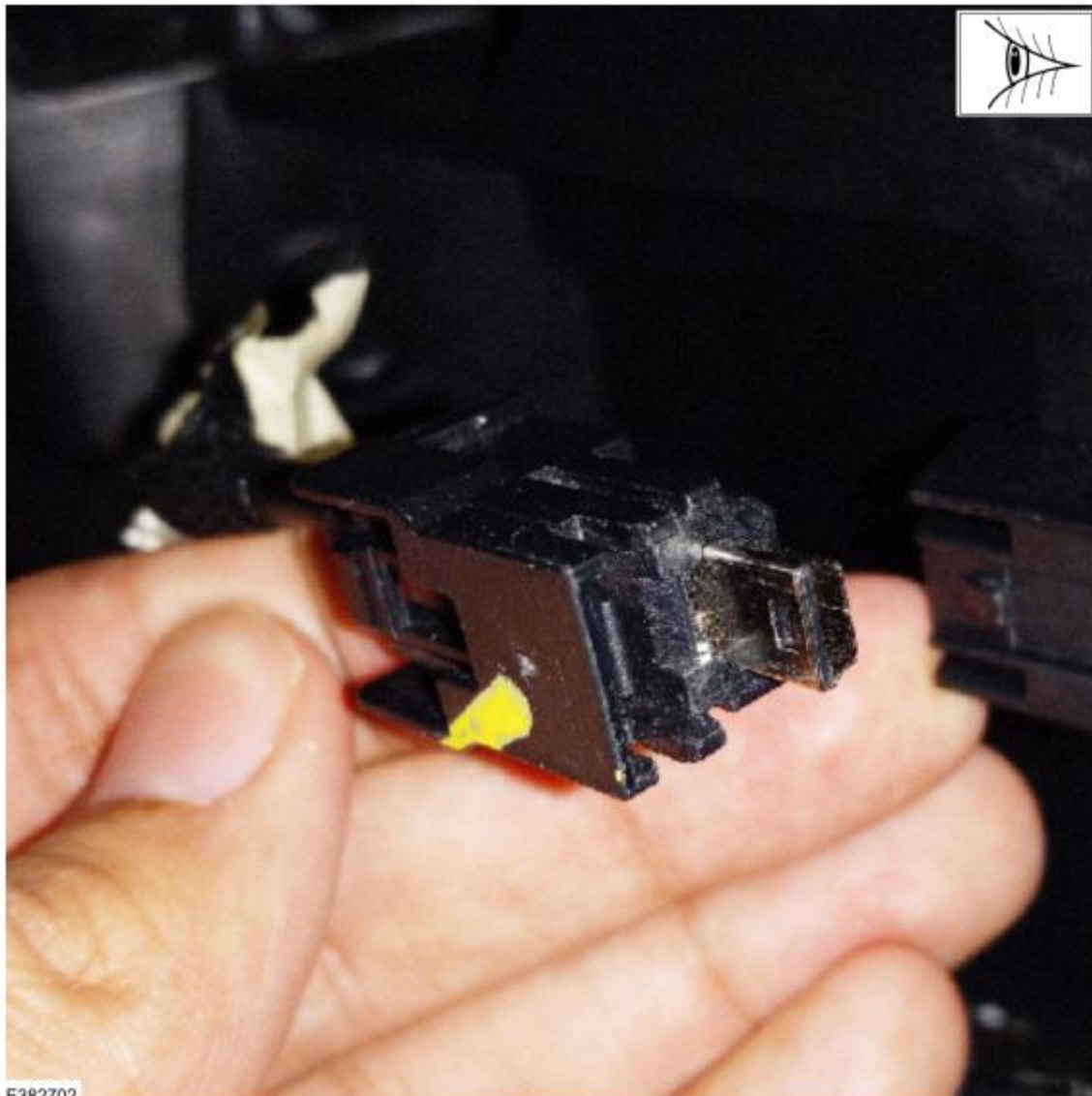


Figure 5



E385353

Figure 6



E382702

(3). For F-150 vehicles with the SYNC media hub and no center console, disconnect the SYNC media hub mini-USB connector from the back of the media hub. On some F-150 vehicles, media hub removal may not be required and the mini-USB connector can be accessed from the back of the instrument panel. Refer to Step 2 in WSM, Section 415-00 Universal Serial Bus (USB) Hub removal. (Figures 7-8)

Figure 7

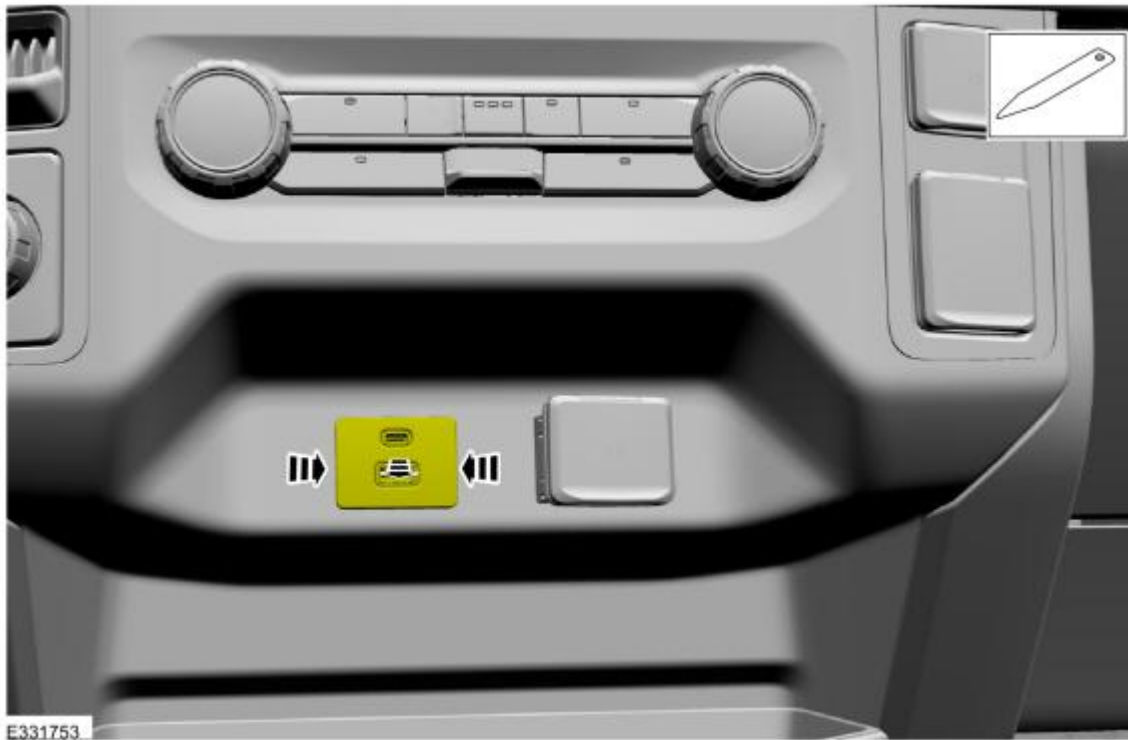
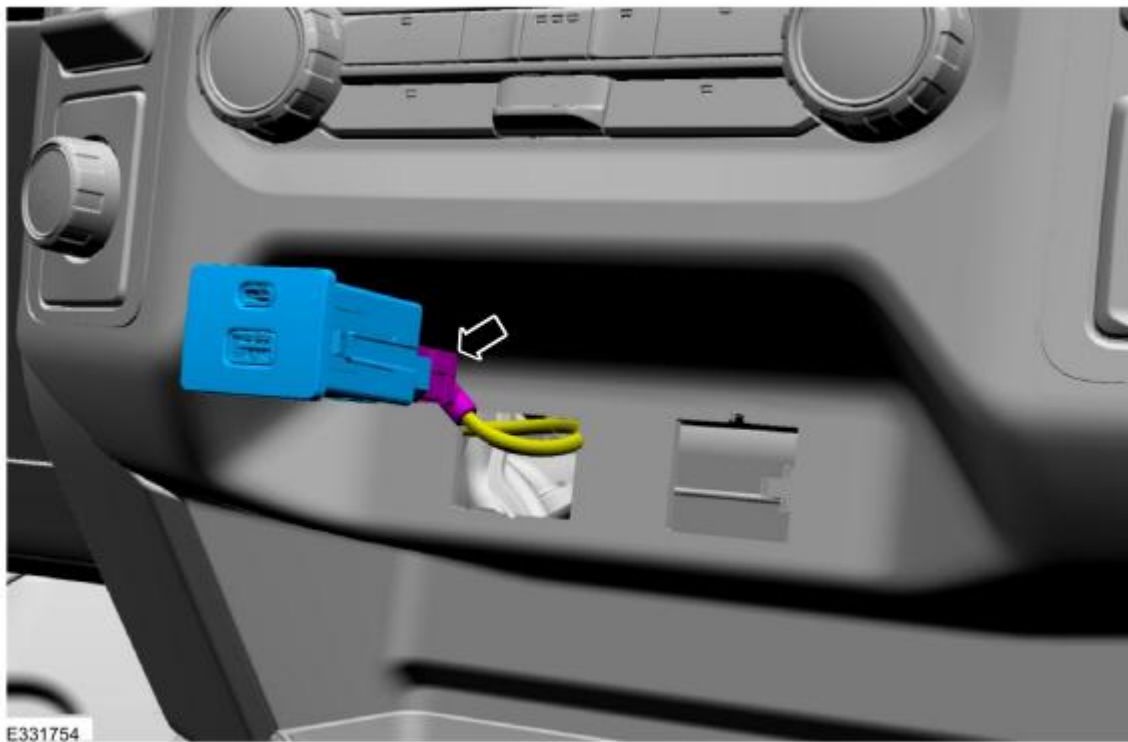


Figure 8



(4). For Nautilus vehicles, remove the floor console lower right trim panel and disconnect the APIM in-line USB connector. Refer to Step 1 in WSM, Section 501-12 floor console removal. (Figures 9-10)

Figure 9

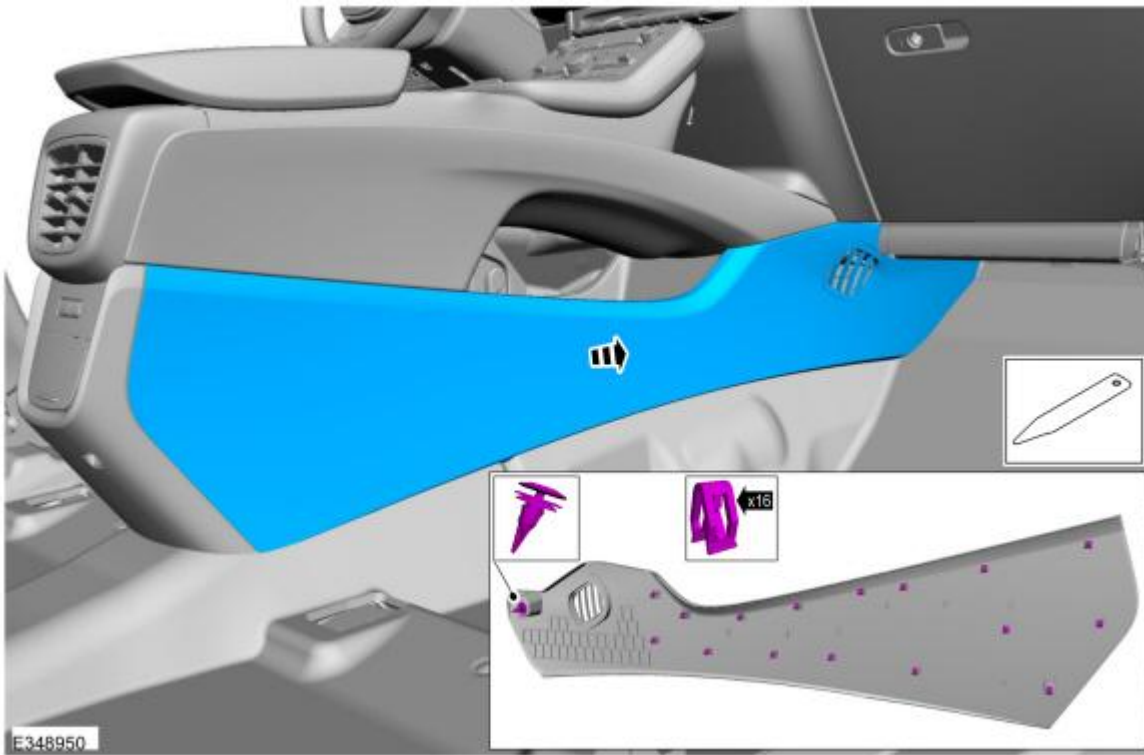
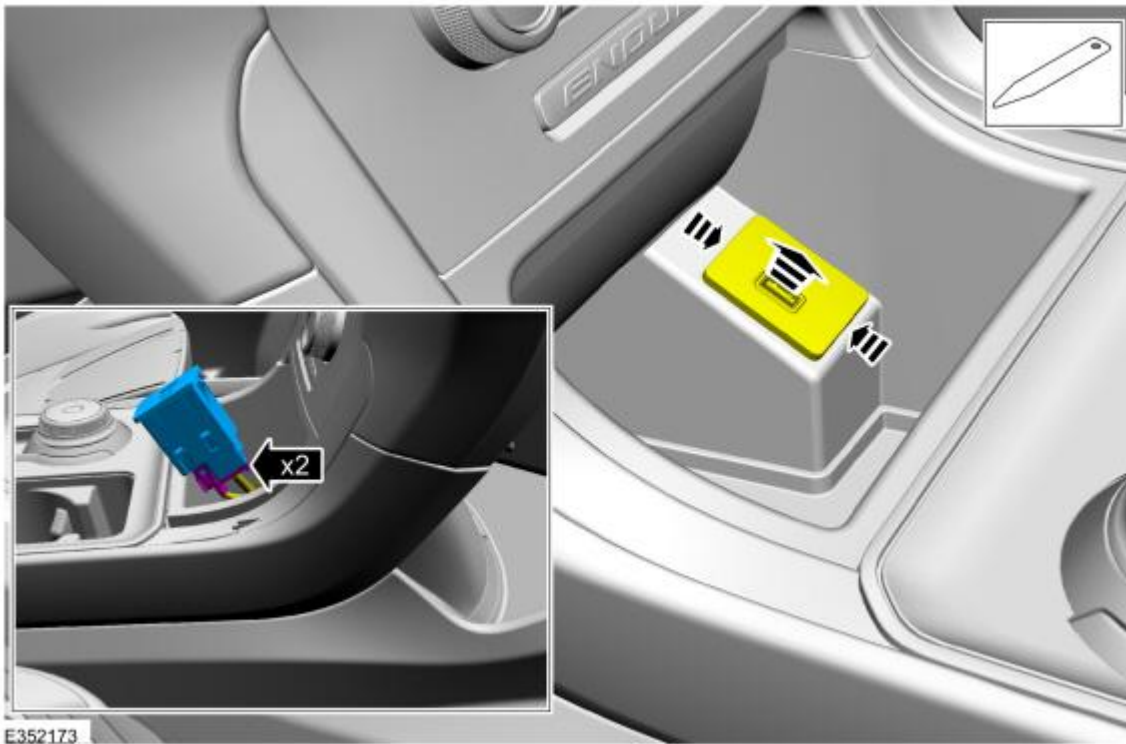


Figure 10



(5). For Edge vehicles, remove the SYNC media hub and disconnect the mini-USB connector on the back of the media hub. Refer to Step 1 in WSM, Section 415-00 Media Hub removal. (Figure 11)

Figure 11



(6). For Bronco vehicles, remove the SYNC media hub and disconnect the mini-USB connector on the back of the media hub. Refer to Steps 1 through 5 in WSM, Section 415-00 Universal Serial Bus (USB) Hub removal. Step 5 allows access to the mini-USB connector.

NOTE: Make sure to use the appropriate Special Tools listed in this document. Failure to use the approved Special Tools may result in application failure. The application may only be run a maximum of 15 times within a 20 day timeframe for each VIN. Refer to the error condition table at the end of this article for further reference.

6. The FDRS prompts the installation of either USB or ethernet cable connections based on the failure detected. Allow the FDRS to establish an ethernet connection before continuing with the process. Moving too quickly prevents the FDRS from identifying the network and affects the recovery process. Once the ethernet connection is identified, select continue.

Required USB Connections (Figures 12-19):

- Mustang Mach-E, Edge, Nautilus, Bronco and F-150 vehicles equipped with a SYNC Media hub:
 - Connect the Mini B 5-pin female adapter to the vehicle harness.
 - Connect the USB 2 Cable - male-to-male to the female adapter and the laptop USB port.

Figure 12 - Mustang Mach-E



Figure 13 - Edge



E385356

Figure 14 - Nautilus



Figure 15 - Bronco



Figure 16 - F-150 with SYNC media hub and center console



Figure 17 - F-150 with SYNC media hub without center console



- F-150 vehicles without a SYNC media hub:
 - Connect the USB 2 Cable - male-to-male or equivalent to the vehicle USB port and the laptop USB port

Figure 18 - USB 2 Cable - male-to-male



E385361

Figure 19 - F-150 without SYNC media hub



Required Ethernet Connections (Figures 20-27):

- Mustang Mach-E, Edge, Nautilus, Bronco and F-150 vehicles equipped with a SYNC media hub:
 - Connect the Mini B 5-pin female adapter to the vehicle harness.
 - Connect the USB-to-ethernet adapter to the female adapter.
 - Connect the ethernet cable to the USB-to-ethernet adapter and laptop ethernet port.

Figure 20 - Mustang Mach-E



E382706

Figure 21 - Edge



Figure 22 - Nautilus



Figure 23 - Bronco



Figure 24 - F-150 with SYNC media hub and center console



Figure 25 - F-150 with SYNC media hub without center console



- F-150 vehicles without SYNC media hub:
 - Connect the USB-to-ethernet adapter to the vehicle USB port.
 - Connect the ethernet cable to the USB-to-adapter and laptop ethernet port.

Figure 26 - USB-to-ethernet adapter



E385368

Figure 27 - F-150 without SYNC media hub



NOTE: Make sure to use the appropriate Special Tools listed in this document. Failure to use the approved Special Tools may result in application failure. The application may only be run a maximum of 15 times within a 20 day timeframe for each VIN. Refer to the error condition table at the end of this article for further reference.

NOTE: Make sure any antivirus software loaded in the laptop computer is disabled or uninstalled prior to performing this procedure.

7. Continue following the FDRS on-screen prompts until the procedure is complete. The FDRS displays when to disconnect the cables. Restore the vehicle harness connections.
8. Once this procedure is complete, FDRS returns to the toolbox tab. Check the Professional Technician System (PTS) website for applicable SYNC 4 and Reverse Brake Assist System TSB, SSM, GSB publications.

Error Message in FDRS	Cause	Actions
"Unable to communicate with vehicle through ethernet adapter. Verify that the ethernet adapter being used is compatible per the TSB."	Incompatible or faulted USB-to-ethernet adapter	<ul style="list-style-type: none"> • Verify the USB-to-ethernet adapter that is being used is on the Ford recommended list. • Re-attempt programming with a different adapter.

Error Message in FDRS	Cause	Actions
"This vehicle does not qualify for Module Update Repair. The TSB does not apply to this vehicle concern."	The APIM and/or TCU modules are not corrupted. The TSB procedure does not apply.	The module repair procedure and TSB does not apply. Refer to Step 2, Substep 1 (Yes response) of this article.
"Maximum number of retry attempts has been reached. Unable to continue."	Due to Ford Cyber Security requirements, the maximum number of attempts has been reached to run this application. Up to 15 attempts or within 20 days, whichever comes first.	Replace the affected module (APIM or TCU)
FDRS displays message stating "Please ensure proper cable is connected and Fastboot driver is installed"	Unable to communicate with vehicle through USB 2 male-to-male cable to USB mini adapter.	Unable to communicate with vehicle through USB 2 male-to-male cable. Use a different USB to USB cable and USB mini adapter and run the application once more.

© 2022 Ford Motor Company

All rights reserved.

NOTE: The information in Technical Service Bulletins is intended for use by trained, professional technicians with the knowledge, tools, and equipment to do the job properly and safely. It informs these technicians of conditions that may occur on some vehicles, or provides information that could assist in proper vehicle service. The procedures should not be performed by "do-it-yourselfers". Do not assume that a condition described affects your car or truck. Contact a Ford or Lincoln dealership to determine whether the Bulletin applies to your vehicle. Warranty Policy and Extended Service Plan documentation determine Warranty and/or Extended Service Plan coverage unless stated otherwise in the TSB article. The information in this Technical Service Bulletin (TSB) was current at the time of printing. Ford Motor Company reserves the right to supersede this information with updates. The most recent information is available through Ford Motor Company's on-line technical resources.