



## Installation Instructions for S650 Mustang Rock Guard Installation

Thank you for your purchase of our custom S650 Mustang Standard Rock Guards. This product was designed, manufactured, and assembled here in our Poway, CA shop with USA sourced materials and hardware.

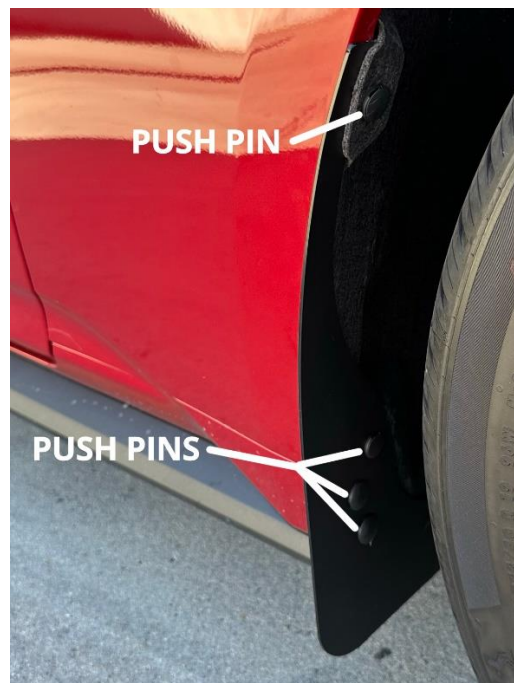
This product utilizes factory mounting locations along with replacement hardware and clips for this installation. Please see the front and rear details below. Tool wise, a finishing tool to pull the front factory push clips and a screwdriver are required. For ease of installation the rear wheels may need to be removed to gain access and remove the factory screws. The front wheels can be turned side to side to access the front installation locations.

### In the Box:

- **2 Front or Rear Rock Guards (Left & Right) Depending on what you selected at checkout.**
- **All Required Mounting Hardware**
- **These Instructions**

### Front Install:

Our Front Rock Guards mount in place with the factory push pins already in your vehicle. You will need to remove the lower 3 push pins (2 big, 1 small) and the upper push pin (1 small) make note of the sizes and placements, as you want these to go back where they came from.



Once the front push pins are removed you can now place the rock guard up to the vehicle and you will want to slide the guard behind the inner fender liner up top and place the push pin back in. Now align the lower holes to the push pin holes and place those back into the car and the front guards are now installed.

### **Rear Install:**

For the Rear Rock Guards, you will want to tune into our video installation guide. This is located under the product listing via <http://www.z11addons.com> or on our YouTube channel. A quick YouTube search for: **2024 Mustang Standard Rear Rock Guard Install** should get you to our video.



If you have any questions or need additional information, please email: [info@z11addons.com](mailto:info@z11addons.com) or give us a call Monday-Friday 7AM-1PM PT. 1(858)527-8727.