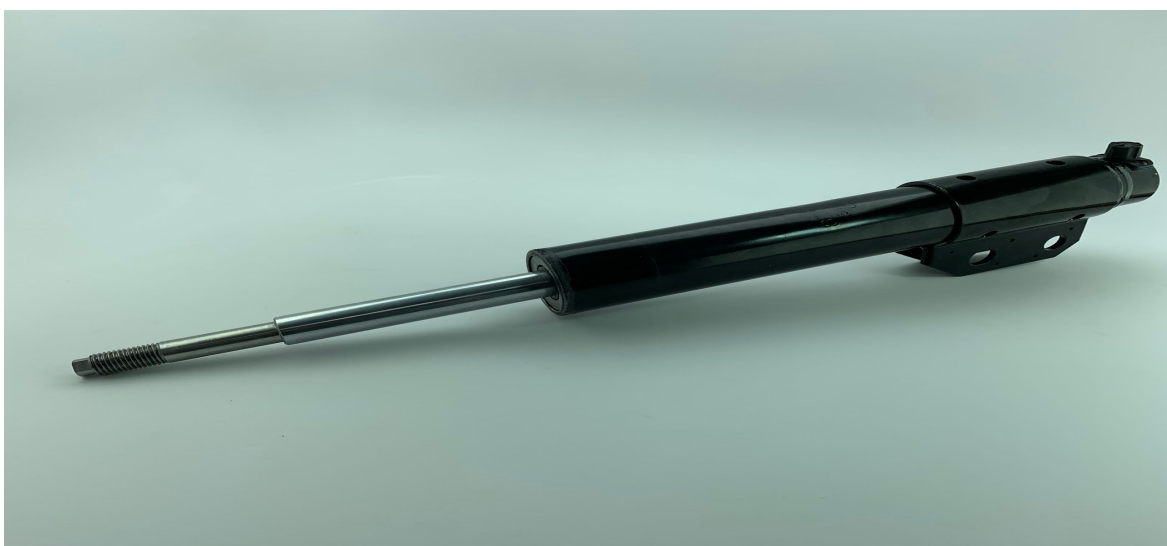




750 Eastcoast St South - Lake Worth, FL 33460
561-588-6630 - Fax: 561-585-4141
www.uprproducts.com - talktoup@uprproducts.net

79-04 MUSTANG PRO SERIES FRONT COIL OVER KIT & SPRINGS

Step 1: Most struts will require the removal of the dust shield in order for the coil over sleeve to slide over the top. If you are using a factory style strut you will need to carefully grind down the outer diameter of the dust cover support from the top side of the strut. Be careful not to grind into the body of the strut.



Step 2: Slide the supplied sleeve over the strut with the non threaded side facing down.

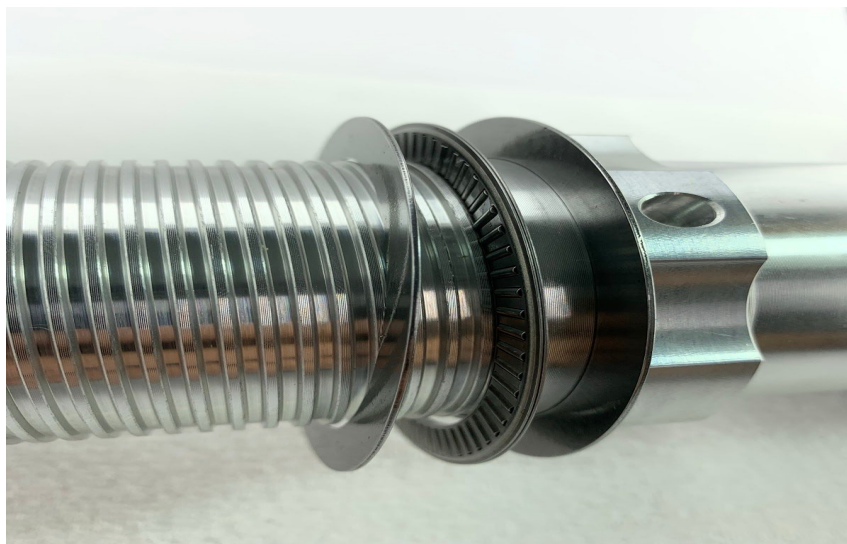


Be sure to shop our online store for the best deals: www.uprproducts.com



750 Eastcoast St South - Lake Worth, FL 33460
561-588-6630 - Fax: 561-585-4141
www.uprproducts.com - talktoup@uprproducts.net

Step 3: Remove the adjuster collar and apply a liberal amount of anti seize on the threads of the adjuster collar. Reinstall the adjuster collar, If you selected the optional UPR thrust bearing kit, slide thrust bearings over the coil over sleeve until it sits on the adjuster collar. Washer, then bearing, then washer. If you did not select the optional UPR thrust bearing kit, go on to the next step.



Step 4: Install the spring onto the coil over the tube so that it rests on top of the adjuster nut.

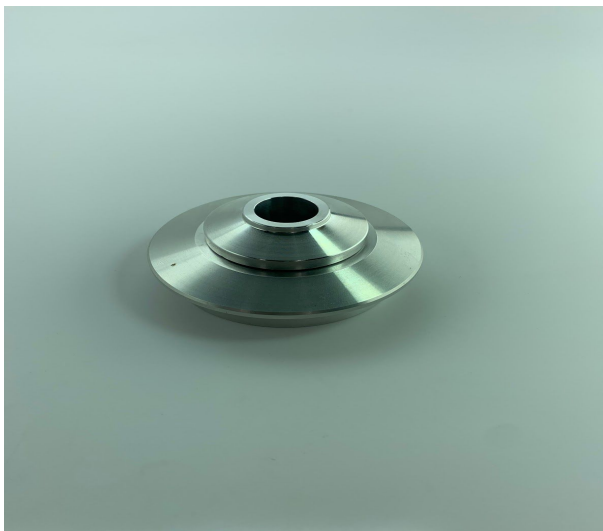
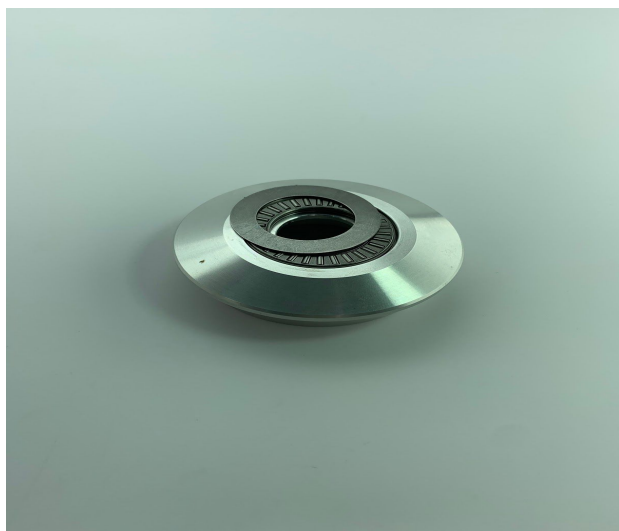


Be sure to shop our online store for the best deals: www.uprproducts.com



750 Eastcoast St South - Lake Worth, FL 33460
561-588-6630 - Fax: 561-585-4141
www.uprproducts.com - talktoup@uprproducts.net

Step 5: Install the thrust bearings in the bottom of the recess on the larger dust cover. Washer then bearing then washer again, Then install the smaller cover over the bearings.



Step 6: Install on to the strut's shaft. Then install the stepped 7/8" spacer onto the top of the strut bolt, this comes with your caster camber plate.



Be sure to shop our online store for the best deals: www.uprproducts.com

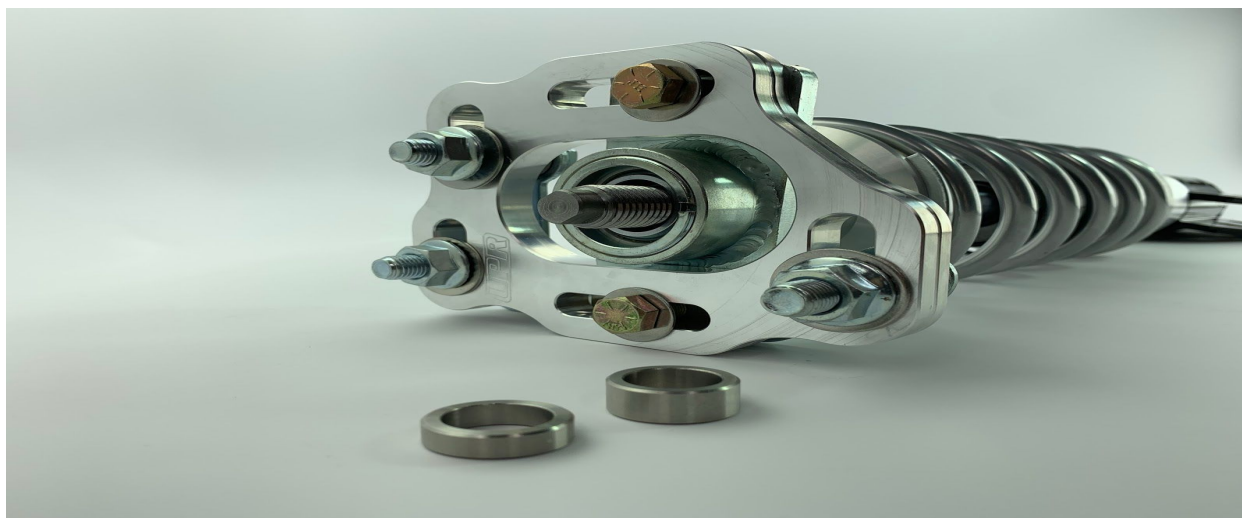


750 Eastcoast St South - Lake Worth, FL 33460
561-588-6630 - Fax: 561-585-4141
www.uprproducts.com - talktoup@uprproducts.net

Step 7: Slide the top of the strut into the strut tower and into the bottom of the caster camber plate of your choice.



Step 8: There will be two different spacers that will slide over the top of the struts stud. Depending on how much of the strut's stud is sticking out determines which spacer to use.



Be sure to shop our online store for the best deals: www.uprproducts.com