



RTX-79F-MUS

Dakota Digital RTX Instrument Installation
For 1979-86 Ford Mustang

Your new RTX-79F-MUS kit includes:

RTX Display



Installation Manuals



**150 PSI Universal
Sender Pack**



Buzzer

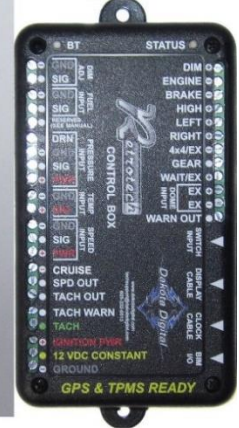


Switch



Main Harness

Control Box



**Ford Speed
Sensor Plug**



**Indicator
Block-off lens**



Manual # 650812

Installation

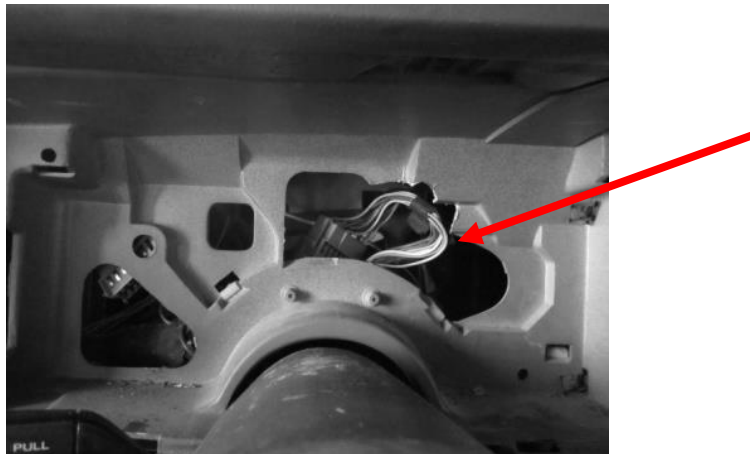
1. First you will need to remove the stock gauge cluster. To do so, remove the stock bezel by removing the three (3) Phillips screws on the top edge as indicated in the photo. Retain hardware for reassembly.



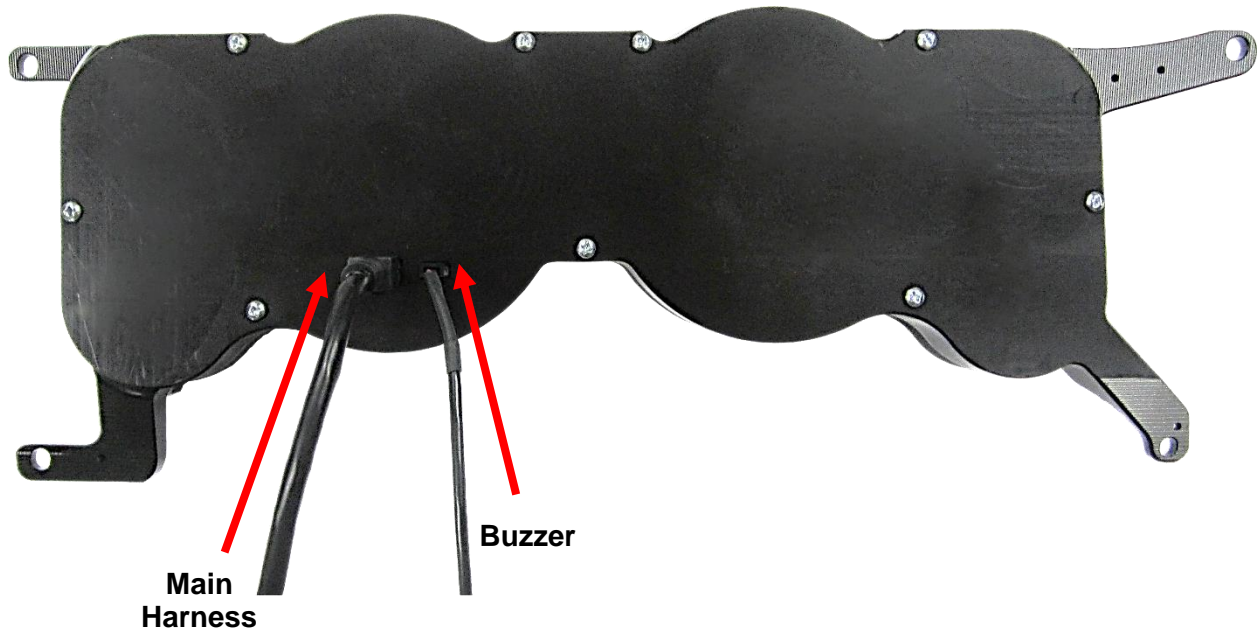
2. Remove the stock gauge assembly from the dash by removing the four (4) screws and detaching the connector and speedo cable on the back side. Retain hardware for reassembly. Keep this hardware separate from the hardware retained earlier to avoid any confusion during reassembly.



3. Slide the connectors and speedo cable back in the dash structure to clear the RTX gauges.



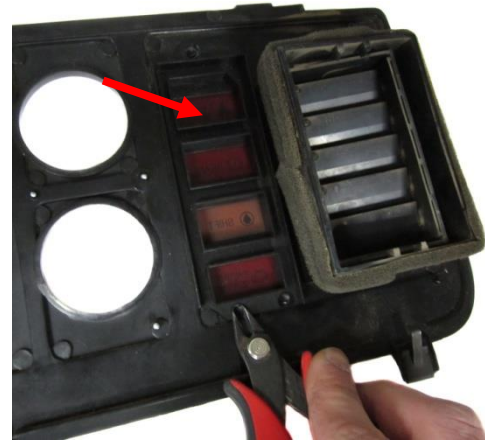
4. Connect the provided Main and optional Buzzer harnesses to the back of the RTX system and carefully route the other end to the control box mounting location.



5. Position the RTX gauges over the dash and secure the system by using the four (4) stock mounting screws. There is adjustment in the mounting holes so you can assure alignment by placing the bezel over the gauges before final torquing.



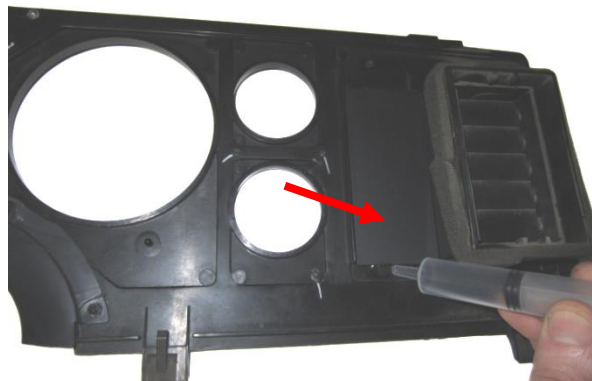
6A. Both the indicator plate and the warning plate will need to be removed from the back of the bezel to allow clearance for the RTX gauges.



6B. Also the small spacer extrusions on the back side of the bezel will need to be snipped off as shown. Depending on trim level (GT etc) and/or model year, the number of extrusions and locations may vary. **Any obstruction from the bezel lying flat against the RTX display needs to be removed.**



7. Peel the paper off the block-off lens and place it shiny side down over the rectangular openings while making sure all openings are covered. Use silicone to hold the lens in place and avoid handling until the silicone has cured.



8. Reassemble the stock bezel over the RTX gauges using the three (3) stock screws and once again re-assure fit and alignment. Refer to the main manual for wiring instructions to complete the RTX installation.



Note: In the Oil Pressure setup menu please select 150PSI for an accurate reading.

Installation of the Ford Speed Sensor Plug

1. Remove the retainer clip that secures the speedometer cable inside the speed sensor. Carefully pull out the speedometer cable, making sure the stock O-ring remains in place.



NOTE: Without the O-Ring in place, the sensor will leak.

2. Replace the speedometer cable with the provided plug and reinsert the retaining clip to keep it in place.



3. Splice into the gray/black (VSS+) wire at the speed sensor. This must be connected to the speed input (SPD SND) terminal on your control box. Consult a wiring diagram specific to your Mustang model and trim level to locate the VSS+ wire from the speed sensor.

⚠WARNING: This product can expose you to chemicals including lead, which is known to the State of California to cause cancer and birth defects or other reproductive harm. For more information go to www.P65Warnings.ca.gov



4510 W. 61st St. North
Sioux Falls, SD 57107
www.dakotadigital.com
dakotasupport@dakotadigital.com

Phone (605) 332-6513
Fax (605) 339-4106

© Copyright 2023 - Dakota Digital

Manual # 650812