

2018+ Mustang Lower Grill and Chin Spoiler Kits

Installation Instructions

P/N: 422081 (R1318-17K945)

P/N: 422082 (R1318-17F775)



2018+ Mustang Lower Grill Kit

P/N: 422081 (R1318-17K945)

2018+ Mustang Chin Spoiler Kit

P/N: 422082 (R1318-17F775)

Installation Instructions



Application: 2018 Ford Mustang 5.0L and 2.3L with Automatic/Manual Transmission

Note: 2018 Mustang Lower Grill Kit (422081) and Chin Spoiler Kit (422082) must be used in conjunction with each other.

Important Note:

Before installing the ROUSH Performance Product, please read through the installation procedure and verify that all items are present. If you are missing hardware or have any questions, please contact ROUSH Performance at 1-800-59-ROUSH, 9:00 AM to 5:00 PM EST.

TABLE OF CONTENTS

Packing List for Mustang Lower Grill Kit..... 3

Packing List for Mustang Chin Spoiler Kit..... 3

Equipment and Supplies Required..... 4

Limit of Liability Statement..... 4

Safety Precautions 4

Work Safely! 4

2018+ Front Fascia Removal 5

ROUSH Performance Lower Grill and Chin Spoiler Installation..... 9

PACKING LIST FOR MUSTANG LOWER GRILL KIT

Description	Part Number	Quantity
Lower Grill Kit (422081)	R1318-17K945	
Lower Grill	1318-17K945	1
Two-Sided Tape 5390 25 mm x 204 mm	TAPE-5390-25x204	5
Front End Black Out Graphic	1318-17F744	1
Website Instruction Sheet	1315-P1INST	1
Sticker - White ROUSH (7" Long x 1.25" Tall)	ROUSH-STKR-7x1.25	2

PACKING LIST FOR MUSTANG CHIN SPOILER KIT

Description	Part Number	Quantity
Chin Spoiler Kit (422082)	R1318-17F775	
Front Chin Spoiler	1318-17F775	1
Front LH - Wheel Canard	1318-6328370	1
Front RH - Wheel Canard	1318-6328371	1
Foam Insert - Chin Spoiler LH Outboard	1318-9U551	1
Foam Insert - Chin Spoiler LH Inboard	1318-9U552	1
Foam Insert - Chin Spoiler Center	1318-9U553	1
Foam Insert - Chin Spoiler RH Inboard	1318-9U554	1
Foam Insert - Chin Spoiler RH Outboard	1318-9U555	1
Spanner Bar	1318-8K241	1
Brkt - Spoiler Support LH	1318-16F770	1
Brkt - Spoiler Support RH	1318-16F771	1
Brace - Spoiler Support	1318-16F774	2
M4.2x1.41 J-Clip	W704823	26
Bolt - M4.2x1.41x19	W715060	9
Bolt - M6x1.0x24	N807309	4
J-Clip - M6x1.0	N623332	8
Bolt - M6x1.0x16	W500013	10
Bolt - M8x1.25x16	161821	2
Bolt - M5x0.8x10 Hex Flange	11127074	2
M4.2x16 Self Tapping Screw	12741	2
Brkt - Canard Up Mnt	1318-6328	2
Template - Spoiler Mntg Holes	1318-17F775TMPL	1
Template - Air Dam Clearance Hole LH	1318-16F774TMPLRH	1
Template - Air Dam Clearance Hole RH	1318-16F774TMPLRH	1
Sticker - White ROUSH (7" Long x 1.25" Tall)	ROUSH-STKR-7x1.25	2
Website Instruction Sheet	1315-P1INST	1

EQUIPMENT AND SUPPLIES REQUIRED

- 7 mm Socket
- 8 mm Socket
- 10 mm Socket
- 13 mm Socket
- Plastic Flat-Edge Squeegee
- Plastic Pry Tool
- 1-1/8" Hole Saw
- 1/4" Drill Bit
- Drill Punch
- Trim Removal Tool
- Blue Painter's Tape
- Spray Bottle with Soapy Water
- Isopropyl Alcohol

If you are missing any items, please call us toll free at 1-800-59-ROUSH.

LIMIT OF LIABILITY STATEMENT

The information contained in this publication was accurate and in effect at the time the publication was approved for printing and is subject to change without notice or liability. ROUSH Performance Products (RPP) reserves the right to revise the information presented herein or to discontinue the production of parts described at any time.

SAFETY PRECAUTIONS



CAREFULLY READ THE IMPORTANT SAFETY PRECAUTIONS and WARNINGS BEFORE PROCEEDING WITH THE INSTALLATION!

Appropriate disassembly, assembly methods and procedures are essential to ensure the personal safety of the individual performing the kit installation. Improper installation due to the failure to correctly follow these instructions could cause personal injury or death. Read each step of the installation manual carefully before starting the installation.

- Always wear safety glasses for eye protection.
- Place ignition switch in the OFF position.
- Always apply the parking brake when working on a vehicle.
- Block the front and rear tire surface to prevent unexpected vehicle movement.
- If working with a lift, always consult vehicle manual for correct lifting specifications.
- Operate the engine only in well-ventilated areas to avoid exposure to carbon monoxide.
- Do not smoke or use flammable items near or around the fuel system.
- Use chemicals and cleaners in well-ventilated areas.
- Batteries produce explosive gases, which can cause personal injury. Therefore, do not allow flames, sparks or flammable substances to come near the battery.
- Keeps hands and any other objects away from the radiator fan blades.
- Keep yourself and your clothing away from moving parts when the engine is running.
- Do not wear loose clothing or jewelry that can get caught in rotating parts or scratch surface finishes.
- Allow the engine, cooling system, brakes and exhaust to cool before working on a vehicle.

WORK SAFELY!

Perform this installation on a good clean level surface for maximum safety and with the engine turned off.

2018+ FRONT FASCIA REMOVAL

The following section will guide you through the installation of the ROUSH Lower Grill (422081) and Chin Spoiler (422082).

1. Suspend the front of the vehicle on jack stands and remove the front wheels.
2. Remove the two (2) push pins from the fender liner on both sides of the vehicle using a trim removal tool or a pry tool as shown. Repeat on the other side of the vehicle.



3. Remove the five (5) push pins and remove the fender liner as shown. Repeat on the other side of the vehicle.

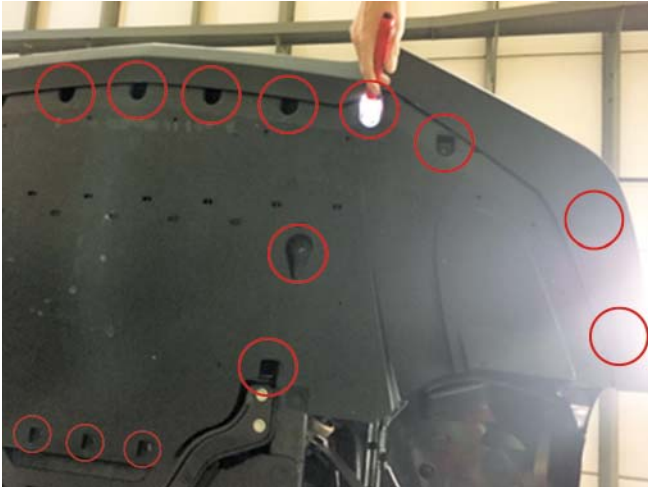
4. Remove the two (2) 8 mm screws from the stone deflector (non-performance package) located on the undertray just in front of each tire.
NOTE: Stone deflector is not shown but fastener locations are indicated. Repeat on the other side of the vehicle. **NOTE:** Performance package-equipped vehicle shown.



5. Remove the seventeen (17) (nineteen [19] for the performance package) 8 mm screws from the undertray. Remove the two (2) push pins and remove the undertray from the vehicle. **NOTE:** Performance package-equipped vehicle shown.



7. Remove the two (2) nuts and one (1) push pin holding the fascia to the fender. Push down on the Christmas tree retaining the bracket to the fender. Repeat on the other side of the vehicle.

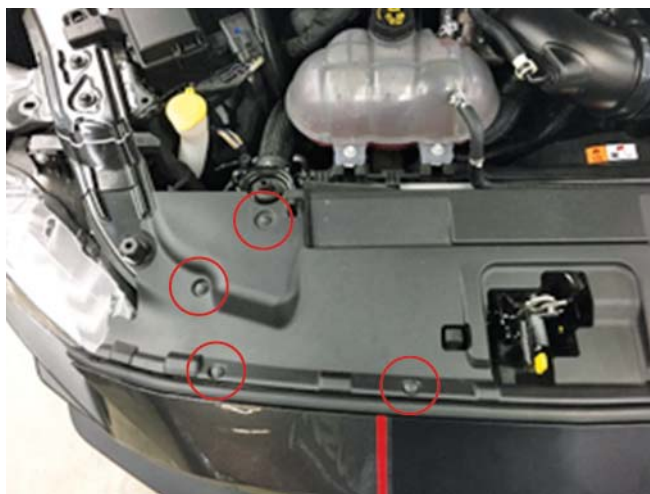


6. Disconnect the fog lamp connector. Repeat on the other side of the vehicle.





8. Open the hood and remove the eight (8) push pins securing the upper radiator shroud. Remove the upper radiator shroud and set aside for re-use.



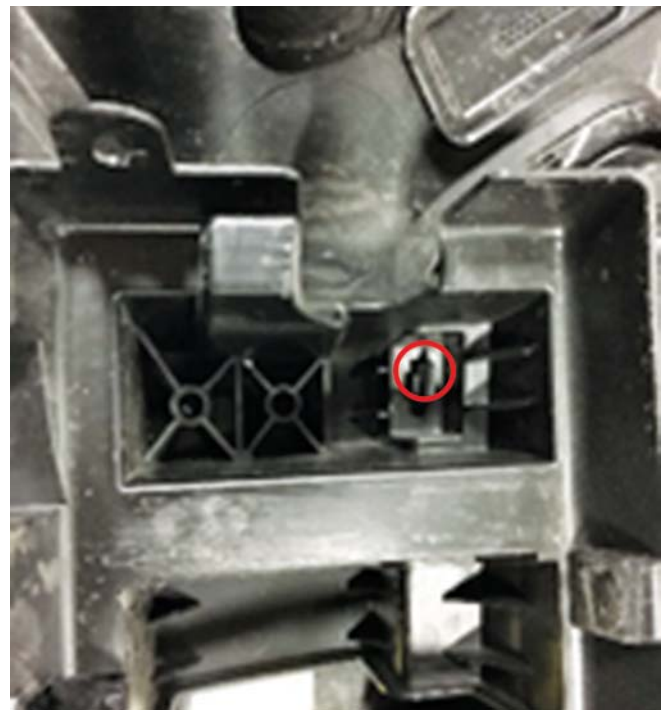
9. Remove the two (2) 7 mm screws and six (6) 8 mm screws from the upper lip of the fascia. Lift the fascia off the alignment pins and forward off of the vehicle (this step may require the assistance from another person).



10. Remove the six (6) (three [3] for each light) 7 mm screws from the back of the fascia holding the fog lights. Repeat on the other side of the vehicle.



11. Remove the fascia energy absorber structure by prying back the six (6) tabs with a pry tool or trim removal tool.



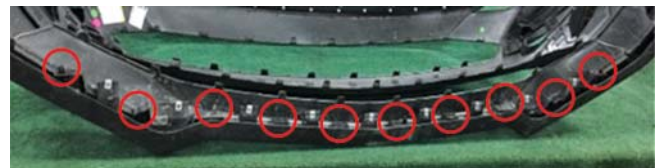
12. Remove the OEM lower grill by prying back on twenty-two (22) tabs with a pry tool and pulling up on the OEM grill. **NOTE:** Be careful not to damage the tabs on the fascia.

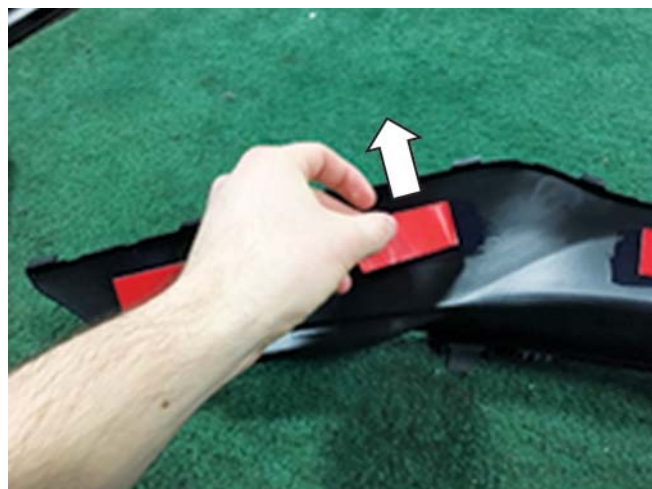


13. Remove the six (6) push pins restraining the end of the OEM chin spoiler to the fascia.



14. Remove the eight (8) 7 mm screws retaining the OEM chin spoiler to the fascia.





ROUSH Performance Lower Grill and Chin Spoiler Installation

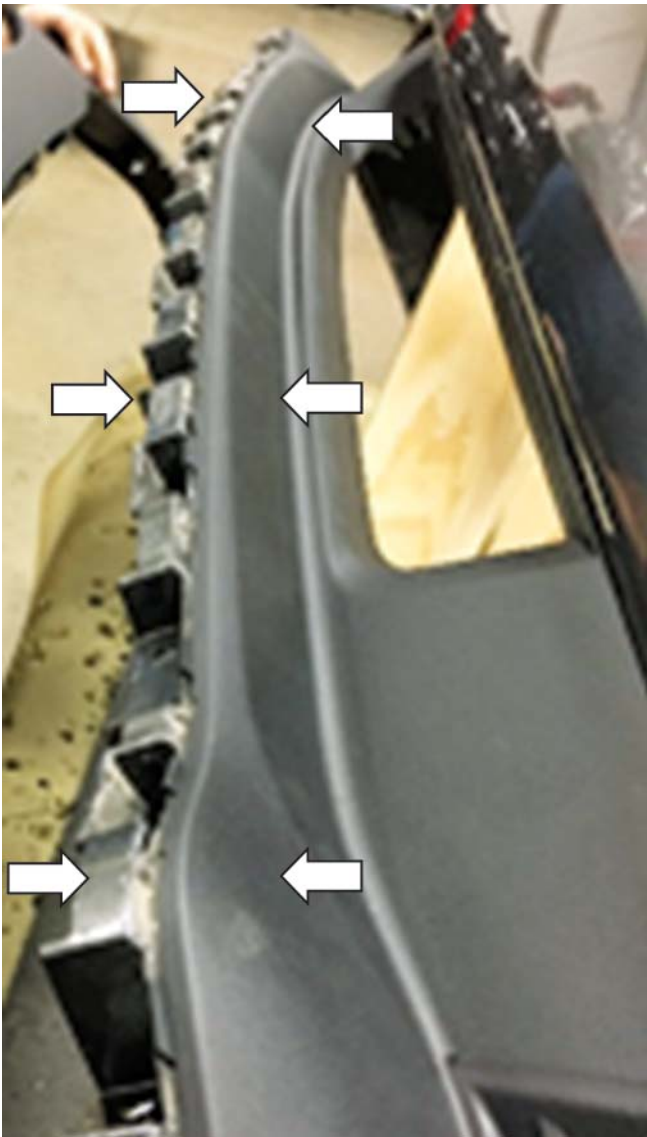
1. Clean the bottom of the ROUSH lower grill (PN: 1318-17K945) and the lower lip of the fascia with isopropyl alcohol. Place five (5) strips of double-sided tape (PN: TAPE-5390-25X204) with the red backing facing out across the lower edge of the lower grill, 5 mm off of the edge.



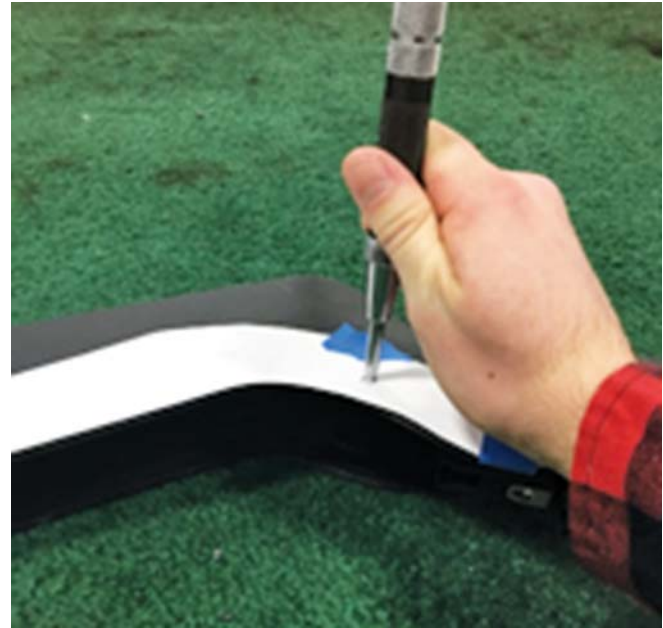
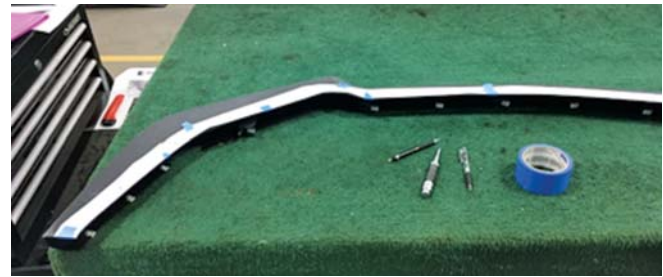
2. Bend the extra tape backing forward beyond the front of the grill. Insert the lower grill into the fascia through the mouth on the front and tilt into position. Snap the grill into the OEM fascia utilizing eight (8) of the OEM retention tabs.



3. Pull the red backing off of the tape on the lower grill and squeeze the lower grill and lower lip of fascia together to wet out the tape. This ensures the tape adheres properly to both parts.

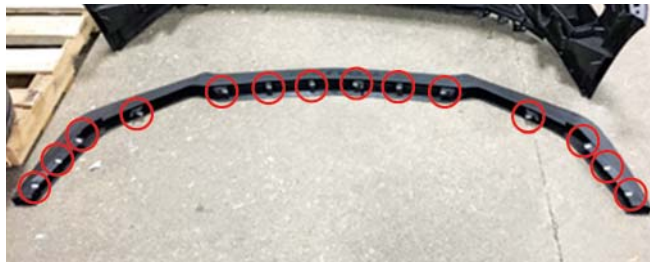


4. Cut out the drill template (PN: 1318-17F775TMPL), check scale with a metric ruler and tape to the underside of the chin spoiler as shown. Be sure to align the template on the **UNDERSIDE** of the spoiler (the **ROUSH** logo should be facing down). Align the inner edge of the template to the inner edge of the spoiler. Mark and drill the twelve (12) 1/4" holes in the bottom of the spoiler. Trim out the five (5) rectangular sections.

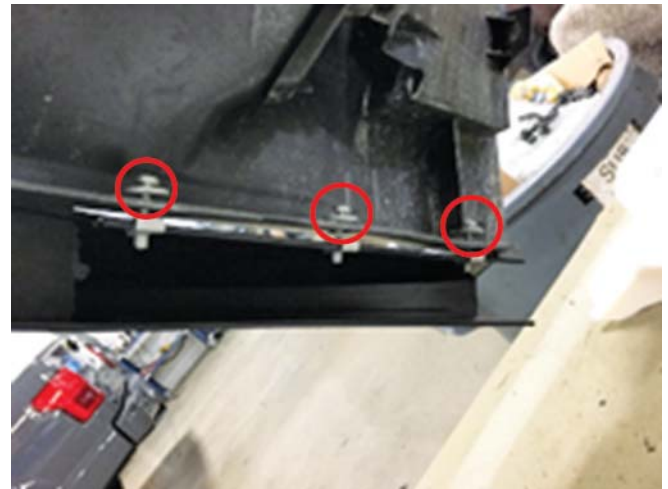


5. Insert the fourteen (14) M4.2 J-clips (PN: W704823) into the backside of the spoiler, aligning them with their respective holes. Eight (8) clips install into the dog house holes and six (6) clips install into the outboard holes.

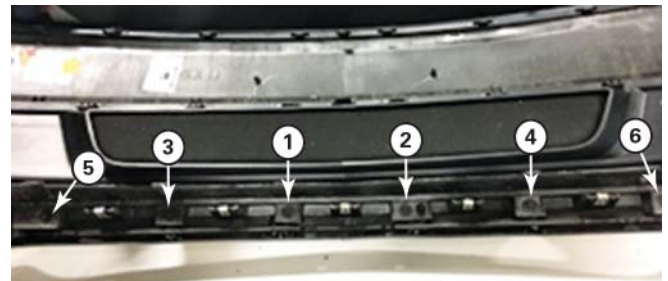




6. Insert the chin spoiler foam inserts (PN: 1318-9U551, 1318-9U552, 1318-9U553, 1318-9U554, 1318-9U555) into the cavities in the spoiler. Start on the LH side, insert 1318-9U551, then move across the chin spoiler, installing the foam inserts in numerical order. **NOTE:** Insert foam with the arrow on the back of the foam facing up.

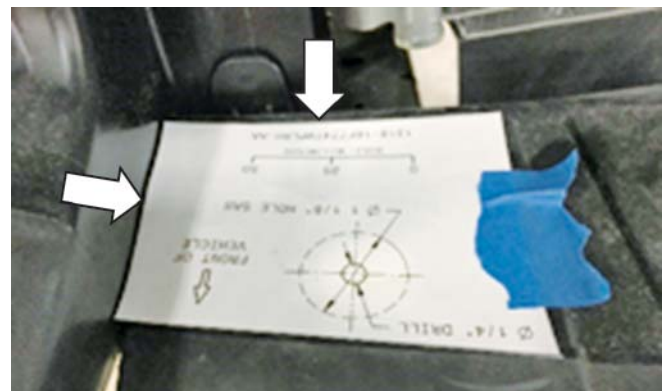


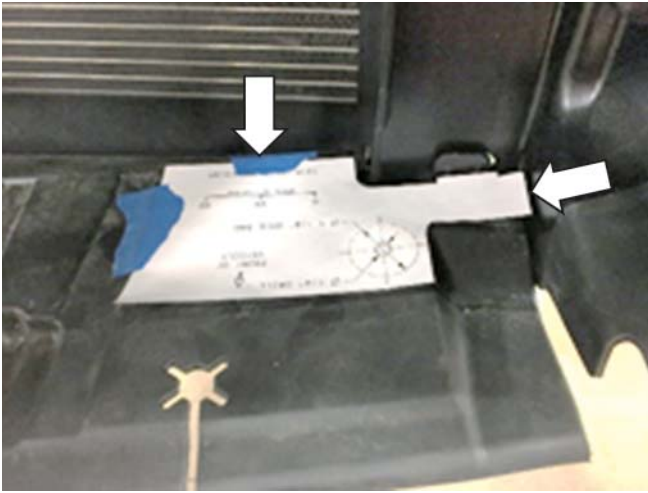
8. Torque the M4.2 fasteners (both ROUSH-provided fasteners and factory-reinstalled fasteners) to 2 Nm. Torque the fasteners down evenly by first starting at the center and working your way out, alternating from one side to the other.



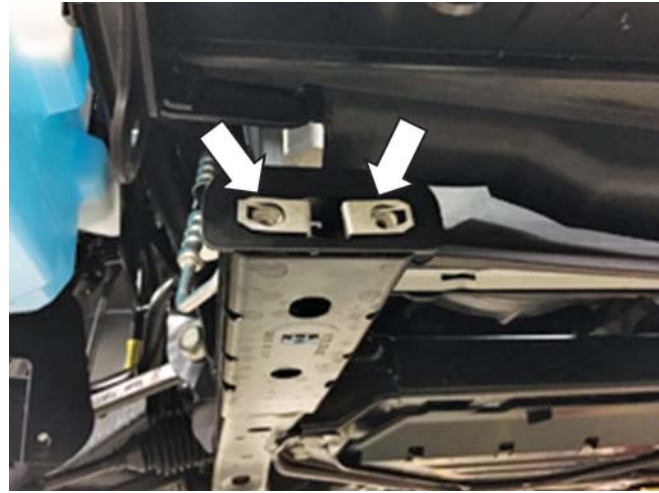
9. Reinstall the energy absorber structure and fog lights in reverse of Removal steps 10 and 11.
 10. Print out the pencil brace templates (PN: 1318-16F774TMPLRH and 1318-16F774TMPLLH) from the back of this manual. **IMPORTANT:** Print templates to scale. Check scale by measuring reference line with a metric ruler. Tape templates to the lower grill air deflector as shown.

7. Install the chin spoiler onto the OEM fascia by hand-starting the fourteen (14) M4.2 fasteners (eight [8] takeoff fasteners in the center and six [6] [PN: W715060] fasteners at the ends). Note that the tabs on the ROUSH lower grill slide under the upper lip of the chin spoiler. Retain the spoiler by hand. Torque all fasteners to 5 Nm.





11. Drill a 1/4" pilot hole using the template as a guide. Then drill a 1-1/8" hole with a hole saw using the pilot hole as a guide.



13. Hang the spanner bar (PN: 1318-8K241) by hand starting four (4) M6 bolts (PN: N807309) into the J-clips as shown. Torque to 10 Nm.



14. Remove only the lower 13 mm nut from the backside of the bumper beam. Slide the pencil brace (PN: 1318-16F774) through the hole in the air deflector and onto the bumper beam bolt and reinstall the 13 mm nut. Repeat on the other side. Do not tighten at this time. **NOTE:** The circular end faces down.



12. Insert two (2) M6x1 J-clips (PN: N623332) into the OEM frame rails as shown. Repeat on the other frame rail.

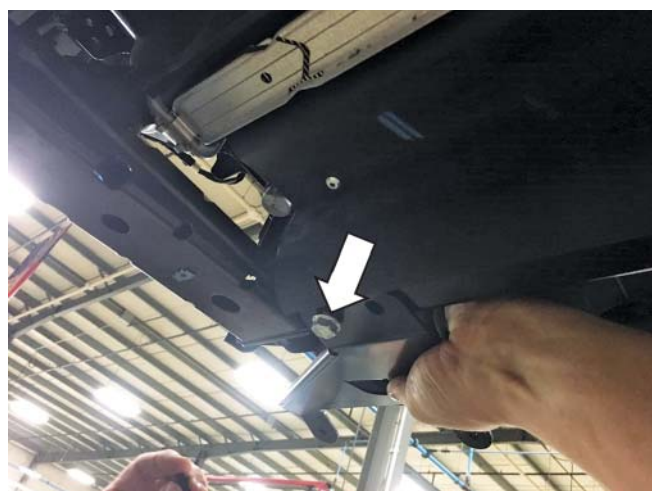




15. Hang the spoiler support bracket (PN: 1318-16F770 for LH and 1318-16F771 for RH) from the pencil braces by hand-starting one (1) M6 fastener through the pencil brace and into the spoiler bracket (PN: W500013). Repeat on the other side. Do not tighten at this time.



16. Hand-start one (1) M8 fastener (PN: 161821) going through the outer hole of the bracket into the spanner bar as shown. Repeat on the other side of the vehicle. Do not tighten at this time.



17. Mock install the outer spoiler canard bracket (PN: 1318-6328) by pushing the OEM fascia retainer into the fender and placing the bracket onto the stud. Drill a 1/4" hole in the fender liner by visually lining the drill bit up with the canard bracket. Repeat on the other side of the vehicle. Do not tighten at this time.



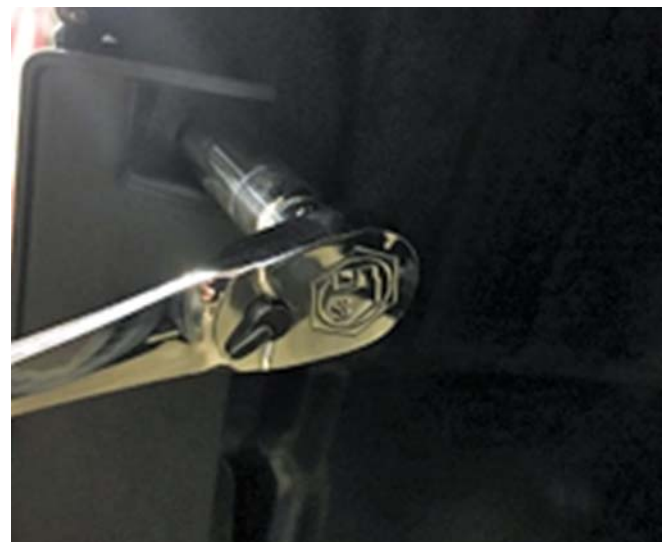
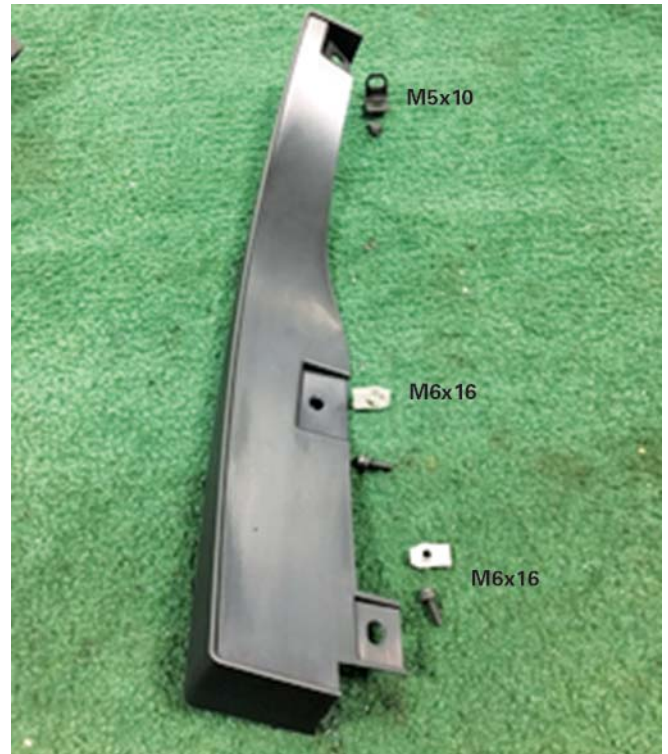
18. Reinstall the fascia in the reverse order starting with Removal step 11 and following it back to Removal step 8. Ensure the spoiler support brackets are resting above the tabs on the fascia.
19. Reinstall the OEM plastic fascia retainers with the two (2) fasteners and one (1) push pin. On the rear-most bolt of the plastic piece, install the canard bracket (PN: 1318-6328) on the fastener on top of the fender sheet metal behind the wheel liner as shown. Reinstall the takeoff nuts. Repeat on the other side of the vehicle.

20. Reconnect the fog lights and torque the fasteners in Installation step 14 to 10 Nm.
21. Torque the fasteners in Installation step 15 to 10 Nm.
22. Torque the fasteners in Installation step 16 to 25 Nm.
23. Torque the fasteners in Installation step 17 to 10 Nm.

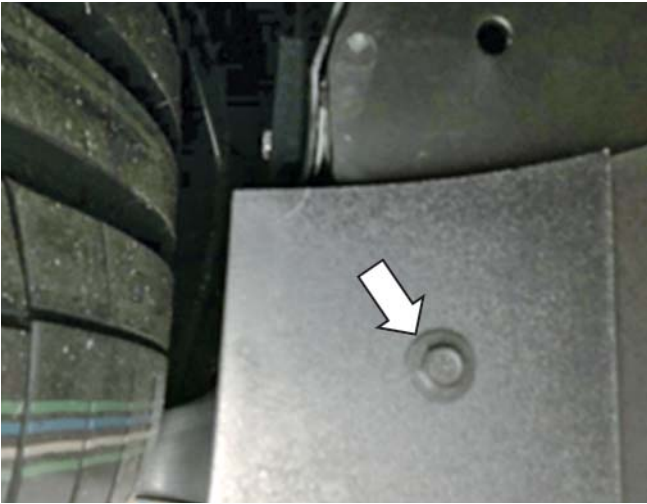
24. Reinstall the belly pan using the takeoff fasteners (with the exception of the two [2] fasteners circled in red) and torque to 5 Nm. For these, hand-start two (2) M6 fasteners (PN: W500013), attaching the lower fascia to the chin spoiler support brackets. Torque these fasteners to 10 Nm. Repeat with the two (2) fasteners on the other side of the belly pan.



25. Clip two (2) M6 J-clips (PN: N623332) onto the inner fascia and belly pan as shown. Bolt on the canard using two (2) M6x16 (PN: W500013) fasteners and one (1) M5x10 (PN: 11127074) fastener.



26. Install one (1) M4.2 self-taping screw (PN: 12741) through the bottom of the canard into the bottom of the chin spoiler. Torque to snug. Torque M6 fasteners in previous step to 10 Nm. Repeat on the other side of the vehicle.



27. Clean the front of the fascia with isopropyl alcohol. Wet the area with soapy water. Remove the backing from the front blackout graphic (PN:1318-17F744) found in the bottom of the box, and wet with soapy water. Apply to the front fascia, aligning the top edge of the graphic with the styling line on the fascia.



28. Reinstall the front fender liner push pins from Removal steps 2 and 3, less the three (3) push pins that were replaced by the M6 bolts for the canards.

Congratulations! You have now completed the installation of your ROUSH Lower Grill and Chin Spoiler.

