

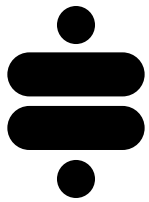
**INSTALLATION
INSTRUCTIONS**

Part # 12129102

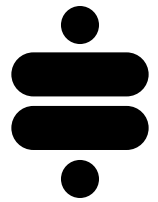


IRS Sway Bar

1979-1993 Ford Mustang



**Please Read And Understand All Instructions
And Warnings Prior To The Installation Of
This Product.**



THANK YOU

Congratulations on your new Ridetech product! It's an honor that you've selected the Ridetech brand to upgrade your ride. Our products are developed around quality and performance without compromise. We're confident you'll have many years (and miles) of pure driving enjoyment.
Thank you for choosing Ridetech!

Road Map

Parts Listing & Sway Bar Rates	3
Exploded View	4
Sway Bar Installation	5-6



**THIS SWAY BAR IS DESIGNED TO ONLY BE COMPATIBLE
WITH THE 79-93 IRS CRADLE IN KIT # 12127099.**



**NOTE: The bushings in this kit contain an anti-friction lining.
No lubrication is required.**

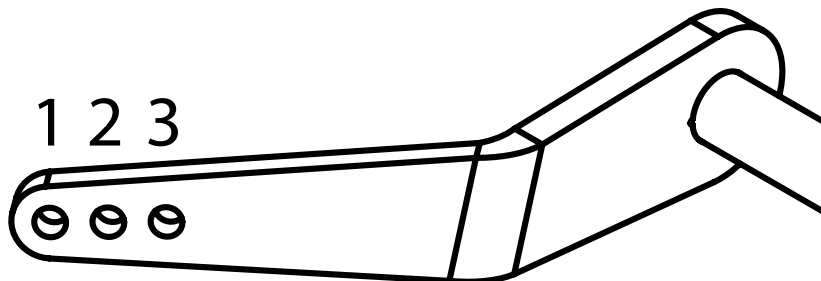
PARTS LISTING & SWAY BAR RATINGS

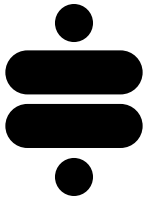
ITEM #	PART #	DESCRIPTION	QTY
1	90003626	IRS REAR SWAY BAR	1
2	90001344	BILLET SWAY BAR MOUNT, 1.55" BUSHING	2
3	70015012	1.00 ID LINED SWAY BAR BUSHING	2
4	90003842	END LINK, 10MM, 90 DEGREE	4
5	99115011	M10-1.5 x 50MM THREADED STUD	2
6	90003625	SPACER	2
7	90002275	COPPER CRUSH WASHER	4
8	99010261	HARDWARE KIT	1

HARDWARE KIT: 99010261			
ITEM #	PART #	DESCRIPTION	QTY
SWAY BAR TO CRADLE			
9	99373002	3/8 SAE FLAT WASHER GR8	4
10	99373020	3/8 x 5/8 OD Flat Washer	4
11	99371018	3/8-16 X 1 1/4 SHCS Alloy	4
12	99372001	3/8-16 GR 8 NYLOK NUT	4
END LINKS			
13	99112002	M10-1.5 NYLOCK NUT	4
14	99113002	M10 FLAT WASHER	4

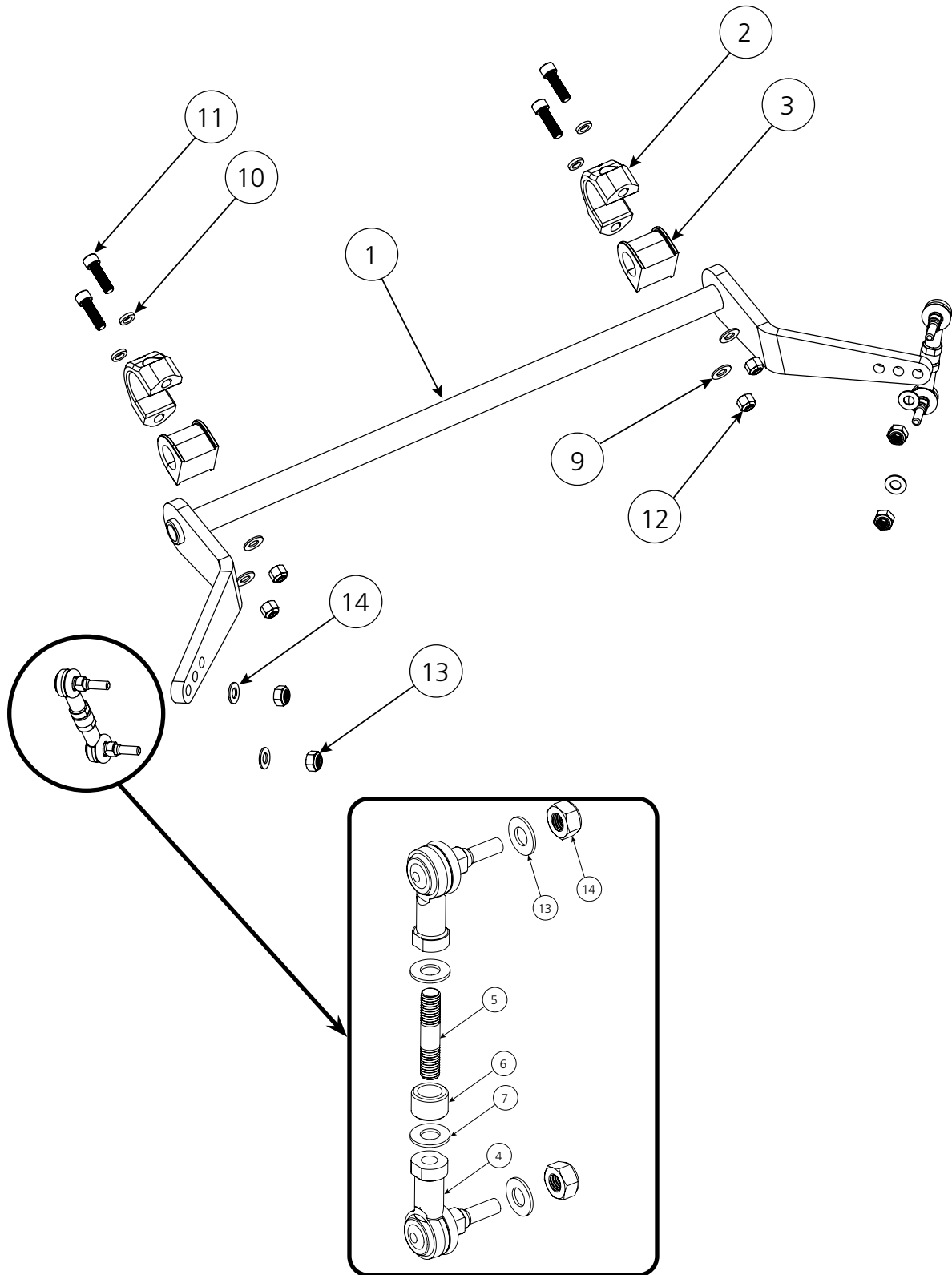
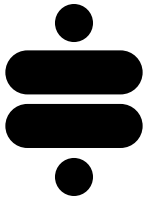
This sway bar features 3 tuning positions to help optimize your car's handling. See the chart and illustration below for hole locations and their associated stiffness rating. We encourage you to drive the car at each position to experience the change in handling characteristics and dial in your preferred setting.

Sway Bar Rates	
Position	Rate (lb/in)
1	400
2	500
3	600





EXPLODED VIEWS



Sway Bar Installation

1. Raise the vehicle to a safe and comfortable working height.

2. Spread open each bushing and install onto the bar. Then slide a billet strap over each bushing. Position them approximately a couple inches from each arm as shown in Figure 1.

3. Position the bar in car at the rear of the IRS cradle (Figure 2).

The sway bar mounting flanges are on the rear of the cradle just above the lower control arms. See Figure 3.

4. Place a 3/8" ID x 5/8" OD Flat Washer on each of (4) 3/8"-16 x 1.25" Socket-Head Bolts. Line up the holes in the sway bar mounting straps with the holes in the mounting flanges on the IRS cradle and insert a bolt into the machined recess of each strap.

5. Place a 3/8" washer and 3/8"-16 nylock nut on each bolt sway bar strap bolts, but leave hand tight for now.

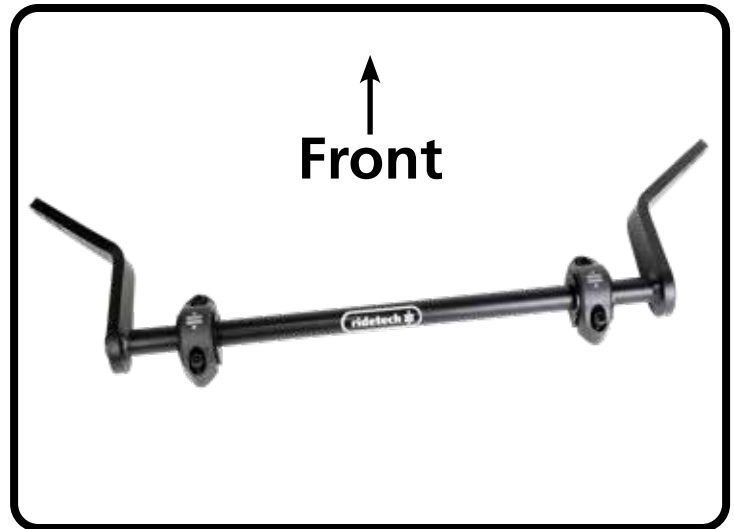
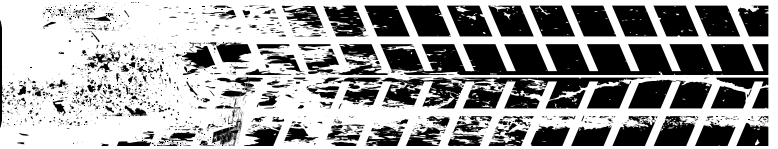


Figure 1



Figure 2



Figure 3

Sway Bar Installation

6. Install one end of a pre-assembled end link into the mount on the lower control arm, and the other end into one of holes of the sway bar arm. See the chart on page 3 for each hole's stiffness rating. We recommend starting at hole #1 and tuning from there. The end link studs should be faced to the rear of the car (Figure 4).

Repeat on the opposite side.

Once both end links are in position, install a M10 washer and Nylock nut on each of the end link studs and torque to **49 ft-lbs**.

7. Once the end links are torqued, tighten the four sway bar mounting strap bolts/nuts and torque to **32 ft-lbs** (Figure 5).

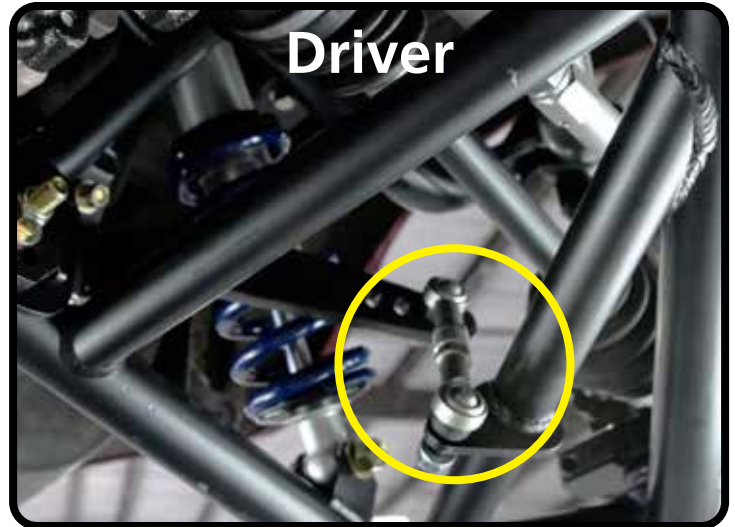


Figure 4



Figure 5