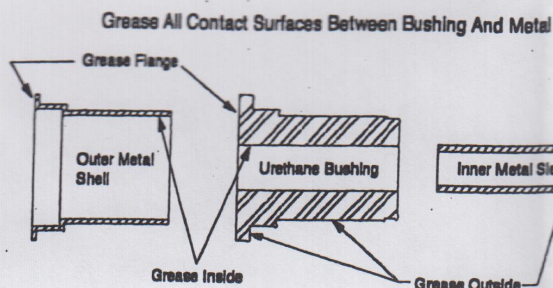


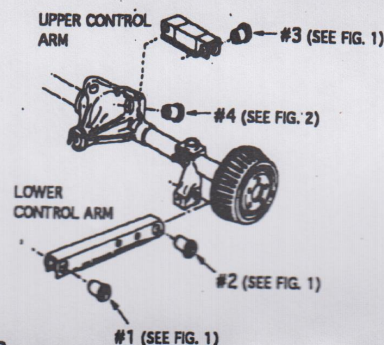
INSTALLATION INSTRUCTIONS FOR CONTROL ARM BUSHINGS WITHOUT OUTER SHELLS

- 1) CONTROL ARM BUSHINGS ARE DESIGNED TO REPLACE THE RUBBER PORTION OF THE ORIGINAL BUSHING (AND INNER SLEEVE WHEN SUPPLIED). THEREFORE THE ORIGINAL OUTER METAL SHELLS, WASHERS, SPACERS AND SPECIAL WASHERS AND SLEEVES THAT ARE USED WITH CAM BOLT TYPE BUSHINGS MUST BE REUSED. ALSO IF INNER METAL SLEEVE IS NOT INCLUDED IN KIT, THEN THE ORIGINAL INNER SLEEVE MUST BE REUSED.
- 2) DISASSEMBLE CONTROL ARM, BEING CAREFUL NOT TO DAMAGE ANY PARTS THAT ARE TO BE REUSED. REMOVAL OF THE ORIGINAL RUBBER BUSHING IS BEST ACCOMPLISHED BY BURNING AWAY THE ORIGINAL RUBBER. PAY CAREFUL ATTENTION TO OTHER ADJOINING PARTS THAT COULD BE DAMAGED BY HEAT. CAUTION-THIS SHOULD BE DONE BY A QUALIFIED SPECIALIST AS IT IS EXTREMELY DANGEROUS.
- 3) REMOVE ALL OF THE ORIGINAL RUBBER BUSHING MATERIAL AND CLEAN CONTACT SURFACES. THIS CAN BE DONE BY WIRE BRUSHING, SANDING OR SIMILAR PROCESS.
- 4) DISASSEMBLE NEW URETHANE BUSHINGS. LIGHTLY GREASE BUSHINGS AS DIAGRAM INDICATES WITH SPECIAL TEFLON GREASE INCLUDED IN KIT. IF MORE GREASE IS NEEDED, OBTAIN TEFLON GREASE FROM YOUR DEALER (PART #19-1750). USE ONLY OUR SPECIAL TEFLON GREASE.
- 5) INSTALL NEW URETHANE BUSHINGS AND ALL NECESSARY WASHERS, SPACERS AND SLEEVES. TORQUE TO FACTORY SPECIFICATIONS.
- 6) RE-ALIGN VEHICLE.
- 7) AFTER DRIVING VEHICLE FOR APPROXIMATELY 50 MILES, RE TORQUE BUSHING RETAINING NUTS AND OR BOLTS TO BE SURE THEY HAVE NOT LOOSENED DUE TO THE BUSHINGS SETTLING IN. REPEAT THIS PROCEDURE AFTER VEHICLE IS RACED, DRIVEN OFFROAD OR DRIVEN IN ABUSIVE CONDITIONS.

CONTROL ARM BUSHING DIAGRAM



TYPICAL REAR SUSPENSION (THRUST WASHER LOCATION DIAGRAM)



THRUST WASHER INSTALLATION INSTRUCTIONS

- 1) THRUST WASHERS PREVENT THE SIDE TO SIDE MOVEMENT OF THE CONTROL ARM WHICH MAY OCCUR DURING CORNERING. LOCATE YOUR KIT# AND USE THE ILLUSTRATIONS TO INSTALL THRUST WASHERS IN THEIR CORRECT LOCATIONS/POSITIONS.
- 2) LIGHTLY GREASE EDGES OF THRUST WASHERS THAT CONTACT METAL.

FIG. 1 POSITIONING DIAGRAM FOR THRUST WASHER

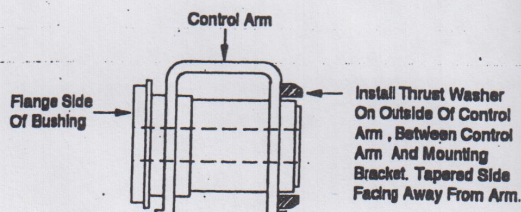
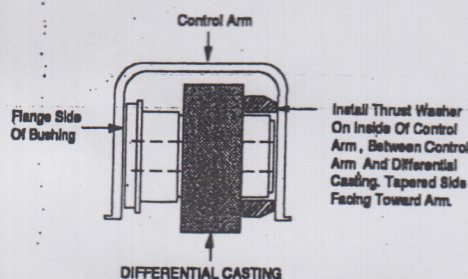


FIG. 2 POSITIONING DIAGRAM FOR THRUST WASHER



KIT #8-301 THRUST WASHER LOCATION			KIT #8-302 THRUST WASHER LOCATION			KIT #8-303 THRUST WASHER LOCATION		
LOCATION #1 64072			LOCATION #1 64106			LOCATION #1 64072		
LOCATION #2 64073			LOCATION #2 64073			LOCATION #2 64073		
LOCATION #3 64071			LOCATION #3 64071			LOCATION #3 64071		
LOCATION #4 64050			LOCATION #4 64050			LOCATION #4 64050		
KIT #8-301 PARTS LIST			KIT #8-302 PARTS LIST			KIT #8-303 PARTS LIST		
PART #	DESC.	QTY.	PART #	DESC.	QTY.	PART #	DESC.	QTY.
TUBE	HI-TECH GREASE	4	TUBE	HI-TECH GREASE	4	TUBE	HI-TECH GREASE	4
SLV-60672	3/4" X 2.900"	4	SLV-60672	3/4" X 2.900"	4	SLV-60672	3/4" X 2.900"	4
SLV-60673	3/4" X 2.400"	4	SLV-60673	3/4" X 2.400"	4	SLV-60673	3/4" X 2.400"	4
U-64050	T-WASHER	2	U-64050	T-WASHER	2	U-64050	T-WASHER	2
U-64071	T-WASHER	2	U-64071	T-WASHER	2	U-64071	T-WASHER	2
U-64072	T-WASHER	2	U-64106	T-WASHER	2	U-64072	T-WASHER	2
U-64073	T-WASHER	2	U-64073	T-WASHER	2	U-64073	T-WASHER	2
U-64049	BUSHING	2	U-64049	BUSHING	2	U-64049	BUSHING	2
U-64074	BUSHING	2	U-64105	BUSHING	2	U-64104	BUSHING	2
U-64075	BUSHING	2	U-64075	BUSHING	2	U-64075	BUSHING	2
U-64076	BUSHING	2	U-64076	BUSHING	2	U-64076	BUSHING	2

Installation instructions:

79-04 Mustang Axle Housing Bushings



714.979.4990

3560 Cadillac Ave., Costa Mesa, CA 92626

Prothane Motion Control highly recommends this and all our polyurethane suspension kits be installed by a qualified automotive technician.

Parts List:

QTY:

19-1750-001 Super Grease	1
SLV-60673 3/4 x .134 x 2.4	2
U-64049 C-Arm Bushings	2
U-64050 Thrust Washer For #64049	2

⚠ Please refer to a factory service manual before any disassembling or reassembling of your vehicle, for proper specifications. Check service manual to make sure all torque specs are properly done.

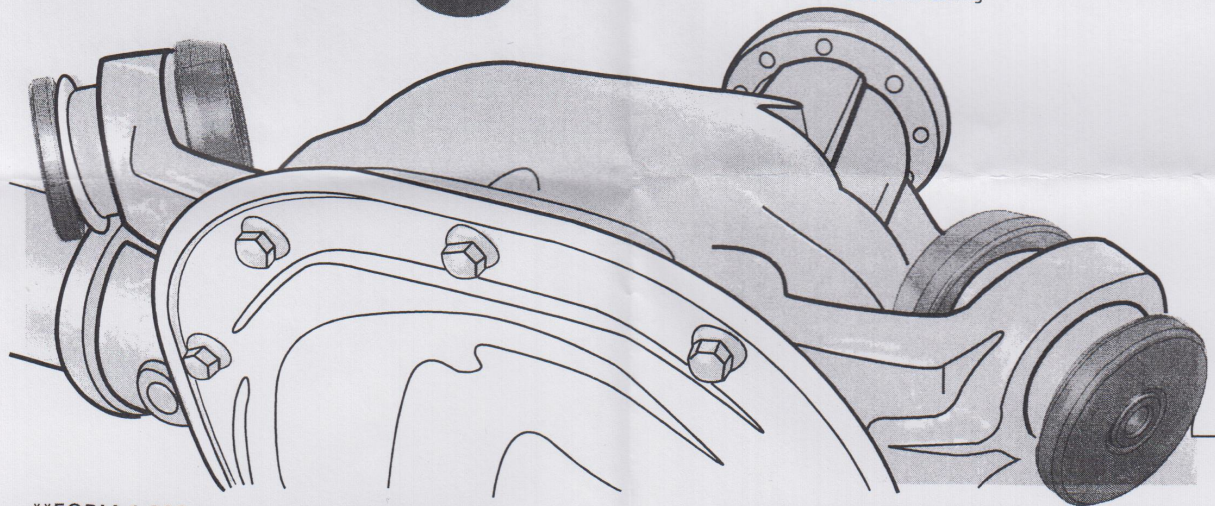
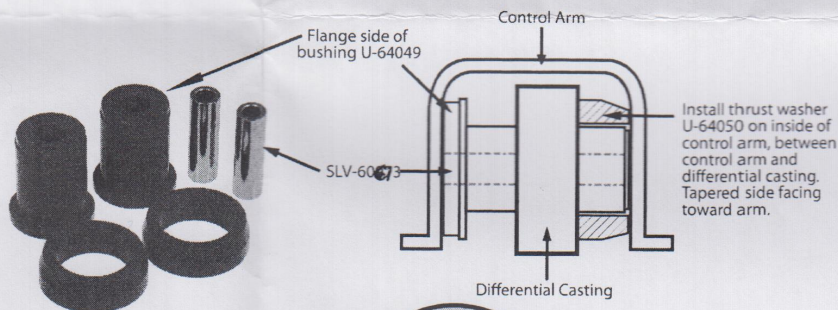
Note: The PROTHANE Bushings generally do not meet in the center. The "crush" or amount the bolt can be tightened is determined by the length of the sleeve.

When performing this installation make sure to reference the factory manual.

Installation:

1. Begin the installation by supporting your vehicle on a full size chassis lift or four heavy duty jack stands allowing the rear axle to hang.
2. If your vehicle is NOT supported using a full size chassis lift you will have to use a hydraulic floor jack to raise the rear axle eliminating any downward load.
3. Completely remove ONE rear upper control arm.
4. Remove the OE bushing from the axle housing while making sure NOT to damage or remove the steel shell!
5. Once you have removed the OE bushing thoroughly clean any debris that may have been left during removal. Then install the new polyurethane bushings see illustrations below for detailed information.
6. Reinstall the rear upper control arm with all the existing OE hardware. Do not tighten fully.
7. Repeat steps 3-6 on the opposite rear upper control arm.
8. If your vehicle is NOT supported using a full size chassis lift carefully jack the rear axle housing upward to its normal ride height position with the vehicle still remaining on the jack stands.
9. Torque the bolt and nut assemblies to 70-100 lb. ft.
10. Installation should be complete and now you can lower the vehicle from the lift or stands.

WARNING: ⚠
Do not remove
the OE shells.



**FORM 6-309

Your vehicles parts may vary slightly from illustrations.