



FORD PERFORMANCE

M-16826-GT350
Model 2015 → 2020
GT350 Hood Strut Kit

NO PART OF THIS DOCUMENT MAY BE REPRODUCED WITHOUT PRIOR AGREEMENT AND WRITTEN PERMISSION OF
FORD PERFORMANCE PARTS © Ford Motor Company 2020

PRIOR TO INSTALLATION READ THESE INSTRUCTION COMPETELY
For questions, Call the FORD PERFORMANCE Techline 1-800-367-3788

Please visit <https://www.performanceparts.ford.com> for warranty information

Package Contents

- 2 - Ford Performance laser etched gas struts
- 1 - Left hand upper bracket
- 1 - Right hand upper bracket
- 2 - Lower fender brackets with fasteners
- 1 - Battery trim cover template (included in bracket bag)

Required Tools

- 13 mm open end wrench
- Drill
- 1" or 1 1/4" Drill bit step drill or hole saw
- 1/4" Drill bit
- 13 mm socket
- Scribe or sharp punch
- Scissors

Ford Factory Shop Manual purchase options www.motorcraftservice.com

NO PART OF THIS DOCUMENT MAY BE REPRODUCED WITHOUT PRIOR AGREEMENT AND WRITTEN PERMISSION OF
FORD PERFORMANCE PARTS © Ford Motor Company 2020

Step 1. With the hood propped up in the open position, remove both left and right 13mm nut from the upper hood hinge stud.



Step 2. Install upper left and right hood hinge strut mount as shown in below photos. Left and right bracket are mirror opposites of each other and fit into the upper hood hinge.

Driver Side and Passenger Side marked with a “D” and “P” respectively



Ford Factory Shop Manual purchase options www.motorcraftservice.com

NO PART OF THIS DOCUMENT MAY BE REPRODUCED WITHOUT PRIOR AGREEMENT AND WRITTEN PERMISSION OF
FORD PERFORMANCE PARTS © Ford Motor Company 2020

Step 3: Relocate the wiper fluid hose on the passenger side by drilling a new ¼” hole approximately 0.5”
outboard of current location

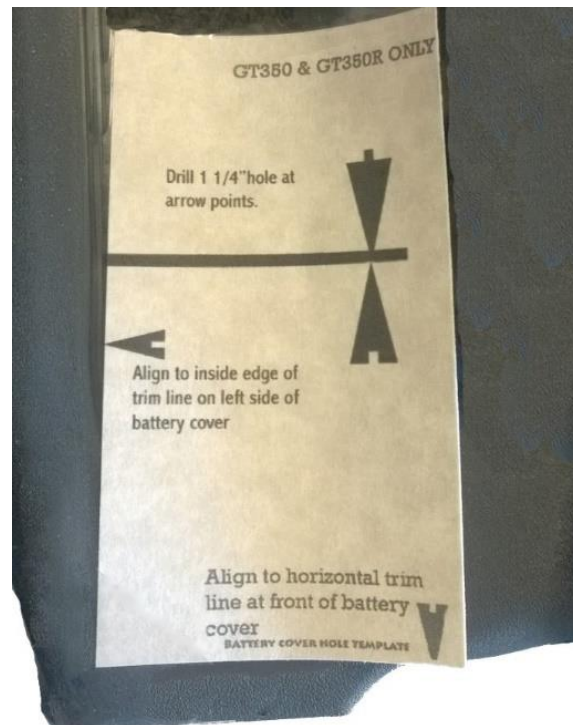


Step 4. Ensure padded part of brackets face straight forward
Tighten the nuts to secure the bracket and hood hinge.
Torque: 17 lb ft (23 Nm)

NO PART OF THIS DOCUMENT MAY BE REPRODUCED WITHOUT PRIOR AGREEMENT AND WRITTEN PERMISSION OF FORD PERFORMANCE PARTS © Ford Motor Company 2020

Step 5. Remove battery cover. Use provided hard paper pattern as template for drilling the strut bracket hole. Remove battery trim cover attaching pins. Place template on the battery trim cover as described below.

For GT350 or GT350R installation, line the left side of the template to the inside edge of the trim line on the battery cover and align the front of the template to the trim line on the front of the battery cover. Mark the hole with a scribe or sharp object where the arrows come together. All is noted on the template card in your kit.



Step 6. Cut 1" or 1 1/4" hole with center in the marked location. CAUTION DO NOT USE a spiral drill bit



Ford Factory Shop Manual purchase options www.motorcraftservice.com

NO PART OF THIS DOCUMENT MAY BE REPRODUCED WITHOUT PRIOR AGREEMENT AND WRITTEN PERMISSION OF FORD PERFORMANCE PARTS © Ford Motor Company 2020



Optional: cut from the side of cover to strut hole. This allows you to completely remove the battery cover without removing the strut.

Step 7. Place assembled lower bracket retainer into the fender hole by sliding the retainer inside the hole.



Position the brackets by putting the bracket retainer inside oval fender hole.

- Move the bracket as far forward as possible
- Pull up on the bracket and finger-tighten the bolt allowing the retainer to catch on the inside of the fender hole.
- Ensure that the retainer ends are pointing side to side, NOT front or back.
- The strut hinge eye should point to the inside on both the left and right sides.

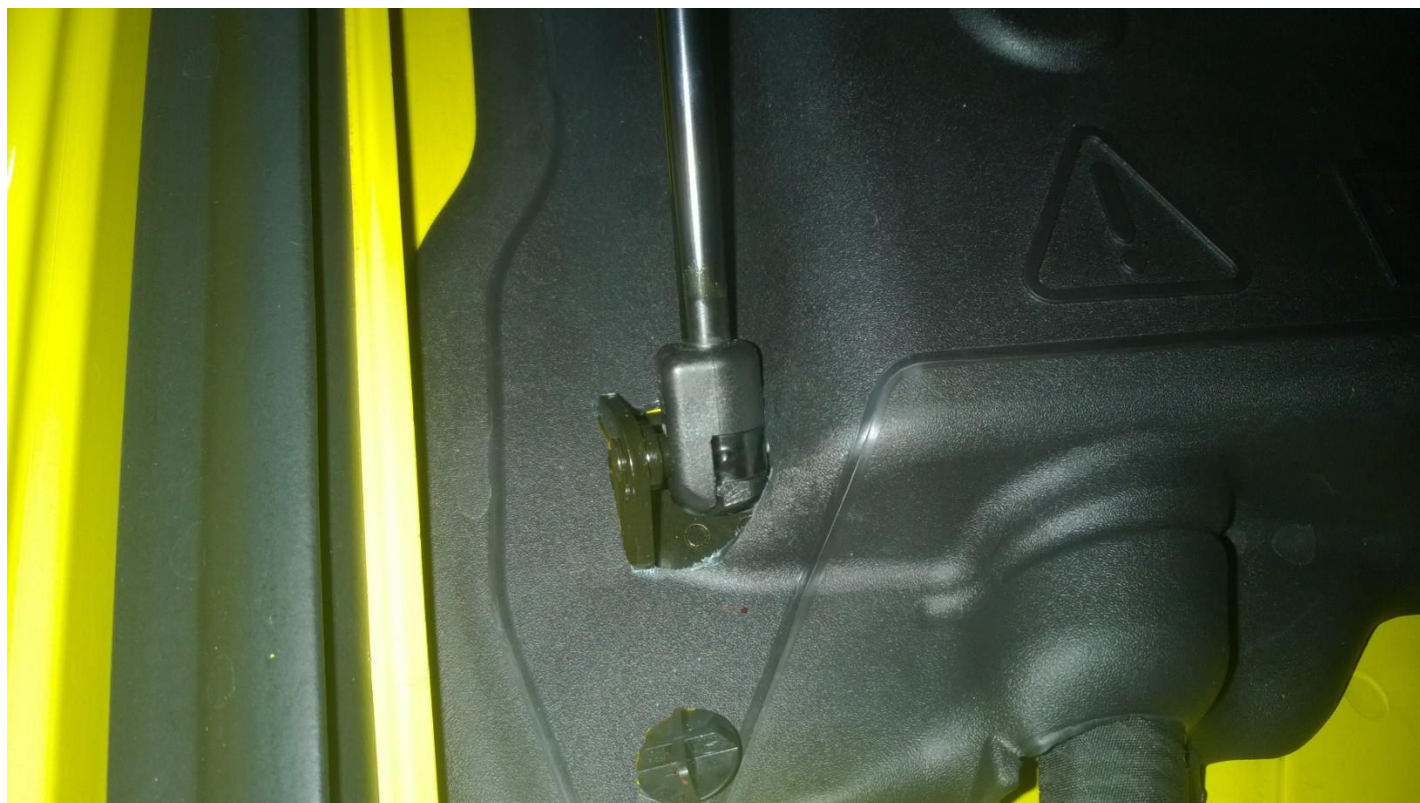
With the bracket positioned, tighten with a 13mm wrench to 20 lb-ft.

CAUTION failure to torque to proper spec may allow the hood weight and strut pressure to move the bracket causing damage if the bracket moves allowing the strut to pop off the bracket.

Ford Factory Shop Manual purchase options www.motorcraftservice.com

NO PART OF THIS DOCUMENT MAY BE REPRODUCED WITHOUT PRIOR AGREEMENT AND WRITTEN PERMISSION OF
FORD PERFORMANCE PARTS © Ford Motor Company 2020

Step 8. Reinstall the battery cover and reinstall the push pins that secure the battery cover in place.





FORD PERFORMANCE

M-16826-GT350
Model 2015 → 2020
GT350 Hood Strut Kit

NO PART OF THIS DOCUMENT MAY BE REPRODUCED WITHOUT PRIOR AGREEMENT AND WRITTEN PERMISSION OF
FORD PERFORMANCE PARTS © Ford Motor Company 2020

Step 9. Snap on the hood struts with the cylinder portion at the hood and the Ford Performance logo facing outward, at the same time taking the hood prop out of the hood prop hole.



Step 10. Carefully Test function of hood struts.

Step 11. Remove hood prop from radiator support cover.

Ford Factory Shop Manual purchase options www.motorcraftservice.com