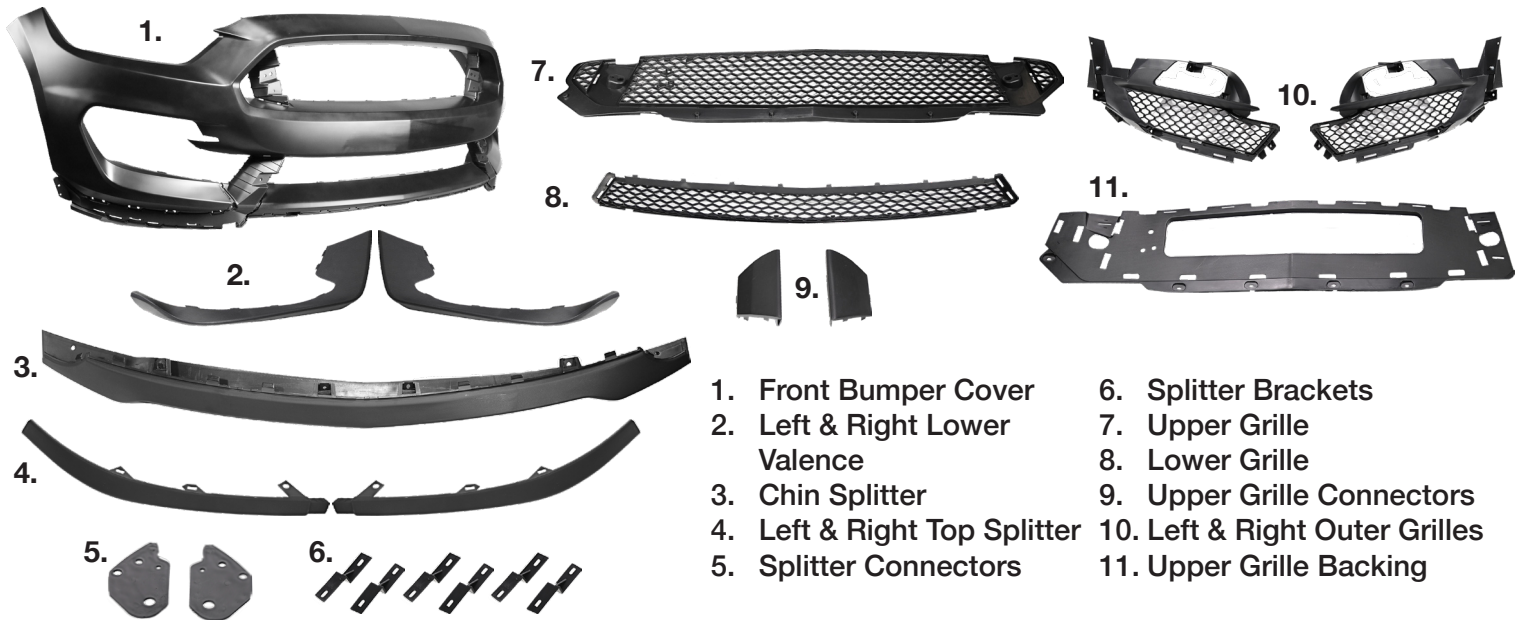


Prop. 65 Warning for California Residents
 WARNING: This product may contain chemicals known to the State of California to cause cancer, birth defects, or other reproductive harm.



2015-17 S550 GT350 Style Front Bumper Kit

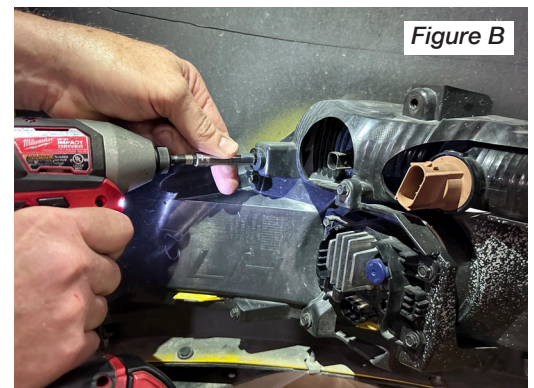


Some steps are only for one side.
 Repeat the same steps for the other side once complete.
 Hardware details included. Hardware colors/finish may differ.
Test Fit Before Painting.

2015-17 Mustang
 Front Bumper Removal
 WATCH HERE >



1. Before installation, remove all components from the box and lay everything out. Double-check and ensure you have the supplied bumper components, hardware, and the correct Fender Splash Shields/Lower Close-Out Tray.
2. Remove the front bumper from your 2015-2017 Mustang. You will have to remove the lower close-out tray and the bumper weatherstrip seal. (Figure A)
3. Remove the factory clip and install the new bumper-to-fender clip. Use the original OEM hardware when doing so.
4. Remove the OEM factory hardware from the turn signal housing brackets. You will reuse the factory hardware bolts (3). (Figure B)
5. Remove the other factory bolts to remove the turn signal housing and the fog lights. You **WILL NOT** be able to transfer the OEM fog lights to the new bumper.
6. Decompress the factory tabs to release the turn signal bracket from the bumper.
7. Remove the bracket and the turn signal housing. Set aside the factory bracket. This will not be used to install the 2015-2017 GT350 bumper.
8. To begin installation, install the upper grille to the backside of the bumper.



FIND YOUR NEXT MOD! SHOP 1000s OF PARTS ONLINE 24/7 @ LMR.COM

9. Align the grille with the tabs and push it into place.
10. Place the upper grille backing plate behind the upper grille. Use the metal clips **(B)** and push them into the corresponding tabs. **(Do NOT install metal clips (B) until after painting. These are difficult to remove.)** Push and snap each turn signal bezel into place. (Figure C)
11. Take the lower grill and push it into place with the corresponding tabs.
12. Push and snap each turn signal bezel into place.
13. Take the turn signal bracket and connect it to the OEM turn signal housing. Use the OEM screws from the original bumper. (Figure D)
14. Take the complete assembly and snap into place with the aligning bumper tabs.
15. Install the provided screws **(D)** with the complete turn signal assembly.
16. Attach a speed clip to the upper grill filler, snap it into place, and use the supplied bolt to tighten it down.
17. Attach another speed clip to the lower grille splitter and install it into the bumper (These do take some force to ensure proper fitment). Use the supplied bolt to tighten down to the bumper.
18. Your bumper should now sit as shown below. (Figure E)
19. Flip the bumper onto its back to install the lower splitter.
20. Start with the middle (larger) splitter piece. Once pushed into place, take (4) speed nuts, attach them to the splitter, and bolt down with the (4) 4.2mm screws. (Figure F)
21. Take each outer splitter piece and snap it into place.
22. Take the provided splitter brackets and bolt 3 to each side (see photo for example). These are used to keep the splitter in place and also attach to the undertray.
23. Install the (2) splitter end pieces with the (4) provided push pins (These will help connect the bumper to the fender liner.) (Figure G)
24. Place the bumper onto the car and align it with the top pins.
25. Transfer the bumper weatherstrip seal on the GT350 front end. (Figure H)
26. Attach the bumper to the fender clips.
27. Reinstall the upper bumper bolts (Reuse the original bolts from the OEM bumper). Don't forget about the small bolts that are hidden under the bumper weatherstrip seal.
28. Reinstall OEM radiator cover with push pins.
29. Reinstall the fender liner to the bumper. Modification may be necessary if you choose to not use the aftermarket fender liner.
30. Reinstall the closeout panel. If you are installing the bumper onto a Performance Pack model, the closeout panel will not work. You will have to use an aftermarket or EcoBoost/Base Model Mustang Closeout panel.

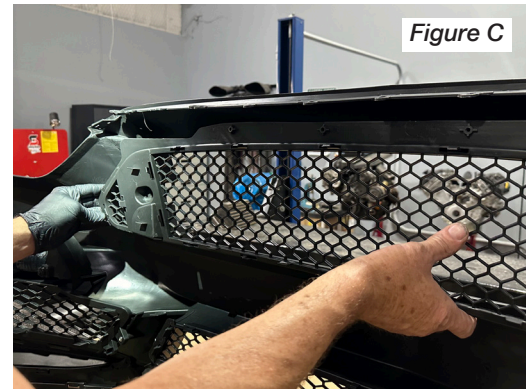


Figure C

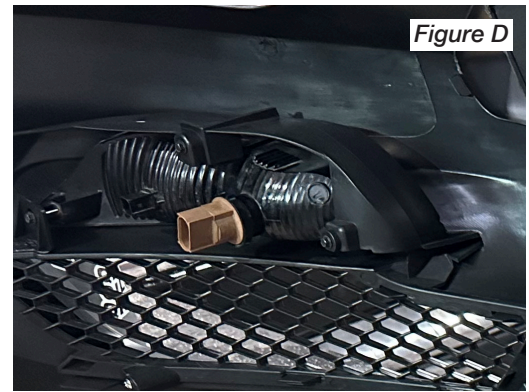


Figure D



Figure E



Figure F

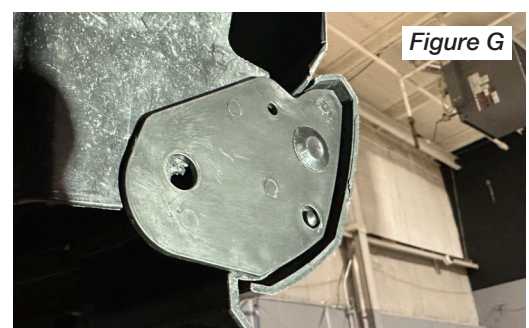


Figure G

31. If you use an EcoBoost/Base Model Mustang Closeout panel, you will be able to connect the Z-Brackets to the closeout panel. You will have to use the speed clips and 4.2mm screws to connect. This will help with securing the bumper and the close-out panel. (Figure I)

32. If you decide to not run a closeout panel, you will not have to use the Z-Brackets.

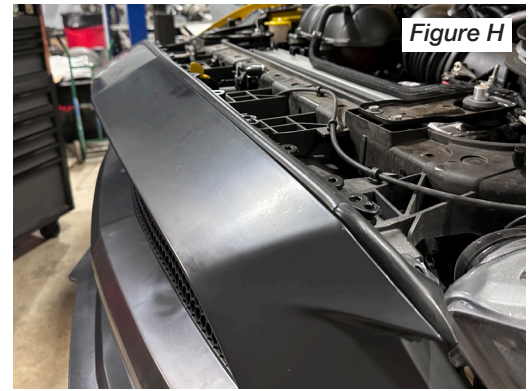


Figure H



Figure I

Ⓐ



QTY 7

Ⓑ



QTY 10

Ⓒ



QTY 24

Ⓓ



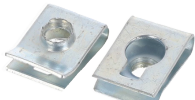
QTY 10

Ⓔ



QTY 4

Ⓕ



QTY 7

Ⓖ



QTY 18

Ⓗ



QTY 24

Ⓘ



QTY 35

Ⓙ



QTY 18

Ⓚ



QTY 5

****Not all of the hardware will be used during this installation. You will have extra components left over from the complete kit.****

Disclaimer

By using this instruction sheet, you agree that other than as expressly stated in the LMR Terms and Conditions (Agreement) or as required by the laws of the state of Texas or applicable United States federal law (Applicable Law), this instruction sheet is provided "AS IS" and LMR does not make any specific representations or warranties about this instruction sheet. For example, LMR does not make any warranties about: (a) the content provided in this instruction sheet; (b) any specific features of this instruction sheet, or its accuracy, reliability, or ability to meet your needs. The knowledge and experience level of users of this instruction sheet vary widely; if you do not have adequate knowledge and experience to use this instruction sheet and safely accomplish the tasks described, please hire a professional to assist you for your safety and the safety of your vehicle and others.

Limitation of Liability

Except as required by Applicable Law, LMR, its affiliates, officers, directors, employees and agents will not be responsible for any loss of profits, revenues, business opportunities, goodwill, or anticipated savings, indirect or consequential loss, punitive damages caused by:

- Errors, mistakes, or inaccuracies in this instruction sheet
- Personal injury or property damage resulting from your use of this instruction sheet

This limitation of liability provision applies to any claim regardless of whether the claim asserted is based on warranty, contract, tort or any other legal theory.

Use this information at your own risk. Any injury, damage, or loss that may result from use of the tools, equipment, products, or information contained in this instruction sheet is the sole responsibility of the user.

Indemnity

To the extent permitted by Applicable Law, you agree to defend, indemnify and hold harmless LMR, its Affiliates, officers, directors, employees, agents, information providers, licensors, and other partners from and against any and all claims, damages, obligations, losses, liabilities, costs or debt, and expenses (including but not limited to attorney's fees) arising from: (i) your use of and access to this instruction sheet; (ii) your violation of any term of the Agreement; (iii) your violation of any third party right, including without limitation any copyright, property, or privacy right; or (iv) any claim that your actions caused damage to LMR or a third party. The defense and indemnification obligations will survive this Agreement and your use of this instruction sheet.

FIND YOUR NEXT MOD! SHOP 1000s OF PARTS ONLINE 24/7 @ LMR.COM