

**1979-93 CONTOUR FAN
BRACKET KIT**

Prop. 65 Warning for California Residents
WARNING: This product may contain chemicals known to the State of California to cause cancer, birth defects, or other reproductive harm.



1. If necessary, remove factory plastic mounting tabs and plastic hooks from fan for additional clearance.



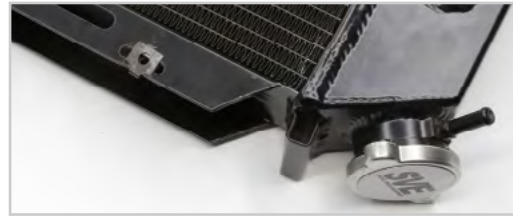
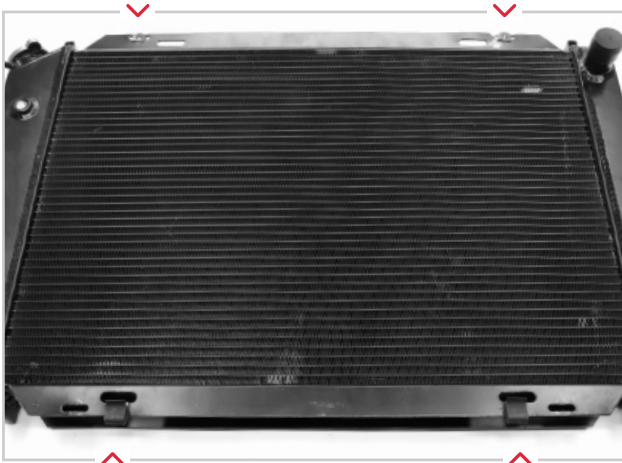
2. Insert bracket mounting bolts into fan shroud & secure with supplied retaining nuts. (Retaining nuts will act as spacers for bracket)



3. Install both brackets with curved edge towards inside of fan assembly. Secure with supplied retaining nuts.



4. If not already equipped, install supplied factory fan shroud retaining hardware on to your radiator. (S-Clips install at bottom of radiator; Nut clips install at top of radiator)

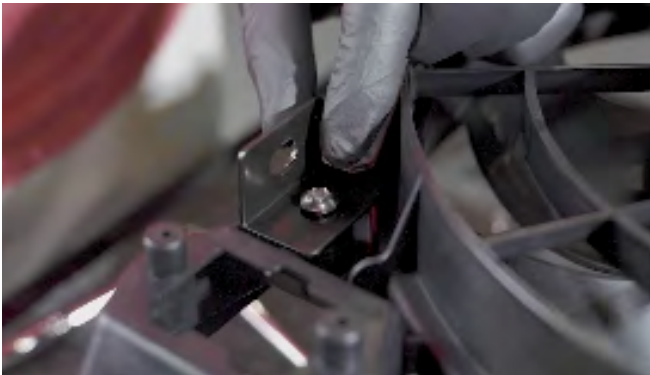


5. Test fit the fan assembly. Most naturally aspirated setups will clear the fans just fine. However, there will be instances where additional adjusting may be required.

If you are installing LRS-CONTOUR-MKB (without overflow tank), skip to step 11.

If you are installing LRS-CONTOUR-MK / LRS-CONTOUR-MKS, continue to step 6.

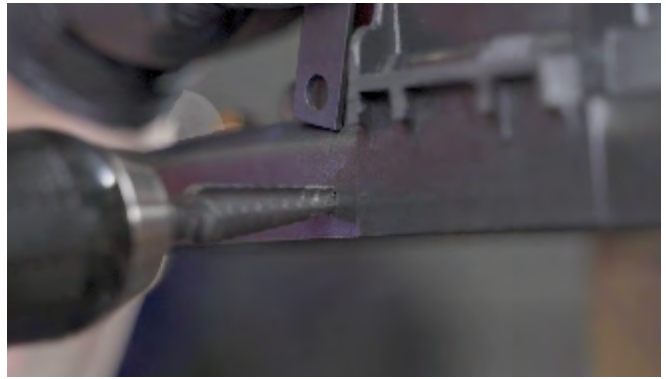
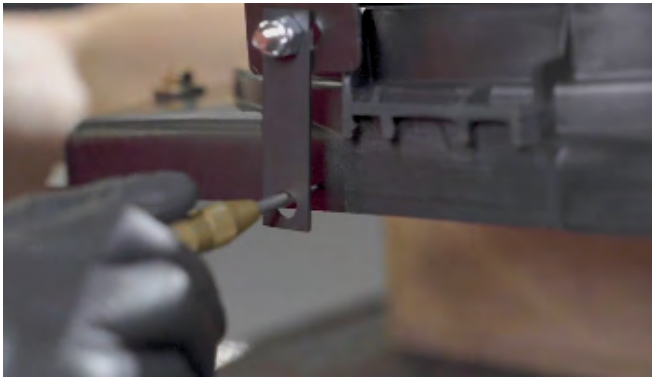
6. Take one of the provided “L” brackets and place it over the lower hole on the driver side of the contour fan assembly. Install a provided button-head Allen bolt through the hole. Thread on the provided locking nut and tighten the hardware enough so that it can still be moved.



7. Position another Allen bolt through the outside hole on the lower “L” bracket and loosely tighten. Use the provided small straight bracket and loosely install it onto the overflow tank.*

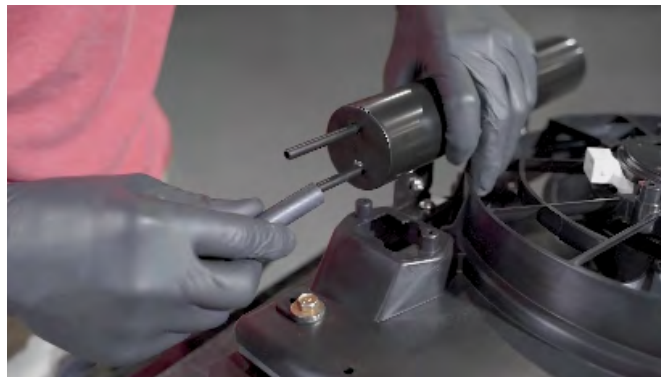


8. Ensure that overflow tank is even as well as the bracket, and then mark the fan shroud with a center punch or with something that you can visibly see. Drill the marked area to a 1/4-inch using a regular drill bit or a stepped-bit. Install a provided button-head Allen bolt through the hole.



9. Thread on the provided locking nut and tighten the hardware enough so that it can still be moved. Make sure the overflow tank is even with the shroud and then tighten the hardware.

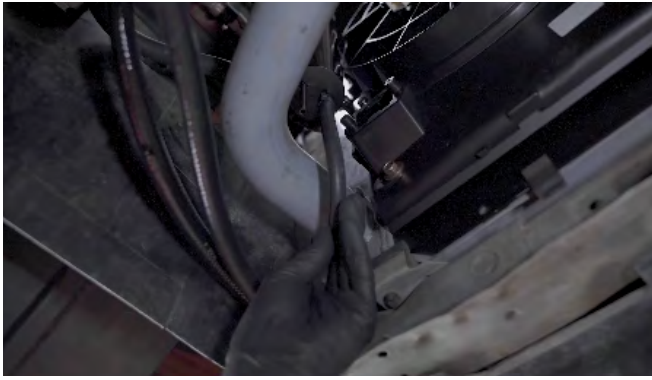
10. Use the provided heater hose and install it onto the shorter fitting at the bottom of the tank. Secure it with a small zip tie or clamp (not included).



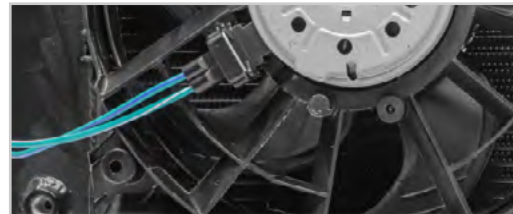
11. Insert lower fan bracket into s-clips, then align & secure upper fan bracket with supplied mounting bolts.



12. Route the overflow hose around the lower radiator hose and connect it to the small fitting on the radiator.



13. Install and wire supplied pig tails to power supply or fan controller of choice.



**WATCH THE INSTALL
VIDEO HERE!**

Disclaimer

By using this instruction sheet, you agree that other than as expressly stated in the LMR Terms and Conditions (Agreement) or as required by the laws of the state of Texas or applicable United States federal law (Applicable Law), this instruction sheet is provided "AS IS" and LMR does not make any specific representations or warranties about this instruction sheet. For example, LMR does not make any warranties about: (a) the content provided in this instruction sheet; (b) any specific features of this instruction sheet, or its accuracy, reliability, or ability to meet your needs. The knowledge and experience level of users of this instruction sheet vary widely; if you do not have adequate knowledge and experience to use this instruction sheet and safely accomplish the tasks described, please hire a professional to assist you for your safety and the safety of your vehicle and others.

Limitation of Liability

Except as required by Applicable Law, LMR, its affiliates, officers, directors, employees and agents will not be responsible for any loss of profits, revenues, business opportunities, goodwill, or anticipated savings, indirect or consequential loss, punitive damages caused by:

- Errors, mistakes, or inaccuracies in this instruction sheet
- Personal injury or property damage resulting from your use of this instruction sheet

This limitation of liability provision applies to any claim regardless of whether the claim asserted is based on warranty, contract, tort or any other legal theory.

Use this information at your own risk. Any injury, damage, or loss that may result from use of the tools, equipment, products, or information contained in this instruction sheet is the sole responsibility of the user.

Indemnity

To the extent permitted by Applicable Law, you agree to defend, indemnify and hold harmless LMR, its Affiliates, officers, directors, employees, agents, information providers, licensors, and other partners from and against any and all claims, damages, obligations, losses, liabilities, costs or debt, and expenses (including but not limited to attorney's fees) arising from: (i) your use of and access to this instruction sheet; (ii) your violation of any term of the Agreement; (iii) your violation of any third party right, including without limitation any copyright, property, or privacy right; or (iv) any claim that your actions caused damage to LMR or a third party. The defense and indemnification obligations will survive this Agreement and your use of this instruction sheet.

FIND YOUR NEXT MOD! SHOP 1000s OF PARTS ONLINE 24/7 @ LMR.COM