



1985-93 MUSTANG EMBLEM KIT INSTALLATION INSTRUCTIONS

Prop. 65 Warning for California Residents



WARNING: This product may contain chemicals known to the State of California to cause cancer, birth defects, or other reproductive harm.

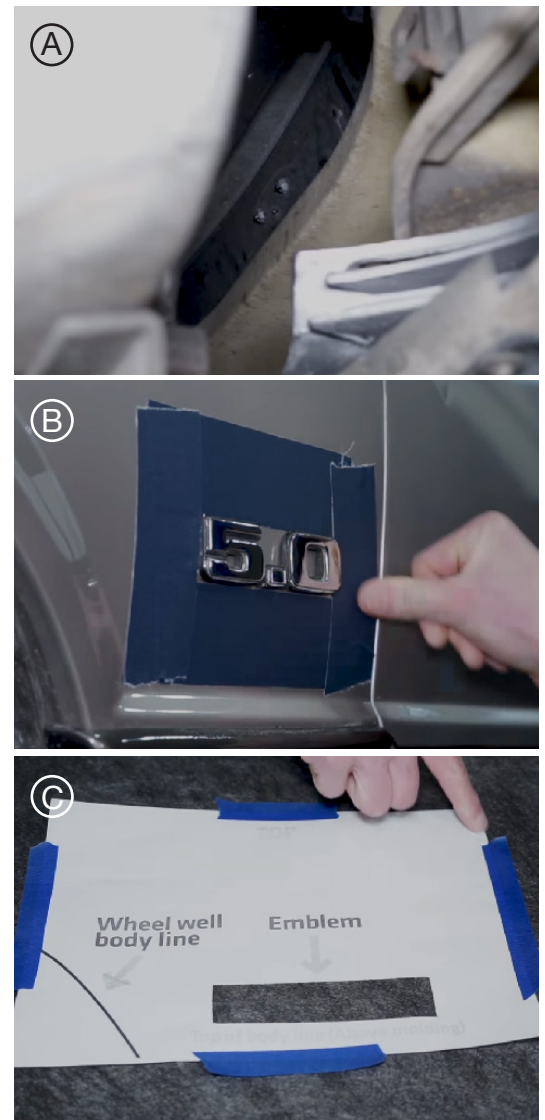
Instructions

FRONT EMBLEM

1. Remove the two 10mm Palnuts located behind the front emblem. They can be accessed from under the front bumper. **(Figure A)**
2. Remove the old front emblem and replace with the new one.
3. While holding the emblem in one hand, secure it with the Palnuts with a 10mm socket.

SIDE FENDER EMBLEMS

1. Using painter's tape, cover the area surrounding the emblem to protect the paint. **(Figure B)**
2. Carefully heat the emblem (we recommend a heat gun) then pry off with fishing line, putty knife, pry bar, etc.
3. Clean the area of any adhesive residue with eraser wheel and paint-safe adhesive remover, etc. Wipe down with a microfiber cloth to dry, and prep the surface with isopropyl alcohol.
4. Cut out the designated rectangle from the included emblem locator template (pg. 3). Place



painter's tape on all four sides of the template.
(Figure C)

5. Align the designated marks on the template with the body lines.

6. After ensuring the template is level, apply pressure to the tape to stick it to the fender.
(Figure D)

7. Remove the adhesive backing from the emblem and place inside the rectangular cutout.

8. Before applying bonding pressure to the emblem, remove the template from the fender.

9. Finally, apply even pressure to bond emblem to the fender.

10. Repeat steps 1-9 for the other side.

REAR EMBLEM

1. Place a strip of painter's tape below the rear emblem and while heating, pry off with a plastic pry bar or fishing line. **(Figure E)**

2. Remove the adhesive residue with eraser wheel and paint-safe adhesive remover and clean with microfiber towel and isopropyl alcohol.

3. Remove the adhesive backing from the rear emblem, align the locating tabs, and apply pressure to attach. **(Figure F)**



**WATCH THE INSTALL
VIDEO HERE!**

Disclaimer

By using this instruction sheet, you agree that other than as expressly stated in the LMR Terms and Conditions (Agreement) or as required by the laws of the state of Texas or applicable United States federal law (Applicable Law), this instruction sheet is provided "AS IS" and LMR does not make any specific representations or warranties about this instruction sheet. For example, LMR does not make any warranties about: (a) the content provided in this instruction sheet; (b) any specific features of this instruction sheet, or its accuracy, reliability, or ability to meet your needs. The knowledge and experience level of users of this instruction sheet vary widely; if you do not have adequate knowledge and experience to use this instruction sheet and safely accomplish the tasks described, please hire a professional to assist you for your safety and the safety of your vehicle and others.

Limitation of Liability

Except as required by Applicable Law, LMR, its affiliates, officers, directors, employees and agents will not be responsible for any loss of profits, revenues, business opportunities, goodwill, or anticipated savings, indirect or consequential loss, punitive damages caused by:

- Errors, mistakes, or inaccuracies in this instruction sheet
- Personal injury or property damage resulting from your use of this instruction sheet

This limitation of liability provision applies to any claim regardless of whether the claim asserted is based on warranty, contract, tort or any other legal theory.

Use this information at your own risk. Any injury, damage, or loss that may result from use of the tools, equipment, products, or information contained in this instruction sheet is the sole responsibility of the user.

Indemnity

To the extent permitted by Applicable Law, you agree to defend, indemnify and hold harmless LMR, its Affiliates, officers, directors, employees, agents, information providers, licensors, and other partners from and against any and all claims, damages, obligations, losses, liabilities, costs or debt, and expenses (including but not limited to attorney's fees) arising from: (i) your use of and access to this instruction sheet; (ii) your violation of any term of the Agreement; (iii) your violation of any third party right, including without limitation any copyright, property, or privacy right; or (iv) any claim that your actions caused damage to LMR or a third party. The defense and indemnification obligations will survive this Agreement and your use of this instruction sheet.

FIND YOUR NEXT MOD! SHOP 1000s OF PARTS ONLINE 24/7 @ LMR.COM

TOP

**Wheel well
body line**



Emblem



└ **Top of body line (Above molding)**