

### WARNING!

If any part of this installation seems beyond your level of installation experience, please seek the help of a certified professional.

Before installing this Drake Muscle Cars product, please read through the installation procedure and verify that all parts are present, including the supplied hardware. If any items are missing, please contact Drake Muscle Cars at (702) 853-2060, 8:00 AM to 5:00 PM PST.

### KIT INCLUDES

- 2 Side Rocker Splitters
- T20 Head Self-Tapping Screws

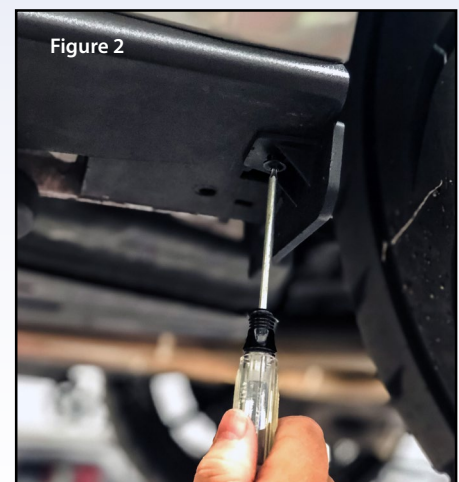
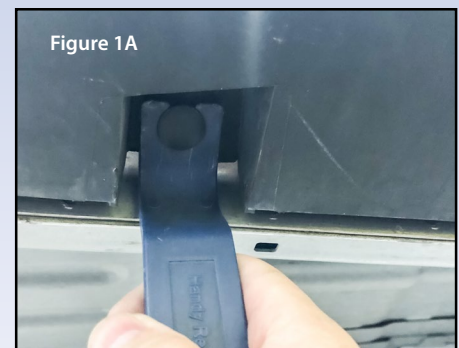
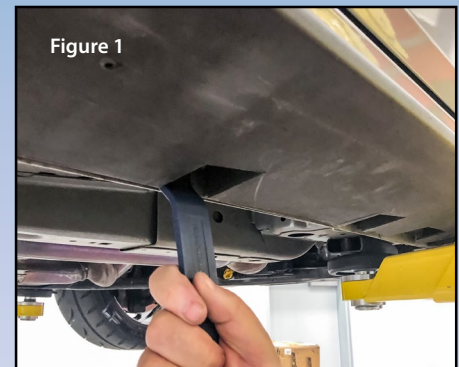


### TOOLS NEEDED FOR INSTALLATION

- T20 Torx Bit
- Plastic Panel Removal Tool

### INSTALLATION

1. Suspend the front of the vehicle on jack stands or place the vehicle on a lift to ensure ample working space.
2. Thoroughly clean the underside of the factory side rocker panels prior to installing the side splitters.
3. Pry the 8 plastic pins from the factory locations. (*figure 1*)
4. Remove the factory deflector from the rocker panel towards the rear of the car (*figure 2*)



### WARNING!

If any part of this installation seems beyond your level of installation experience, please seek the help of a certified professional.

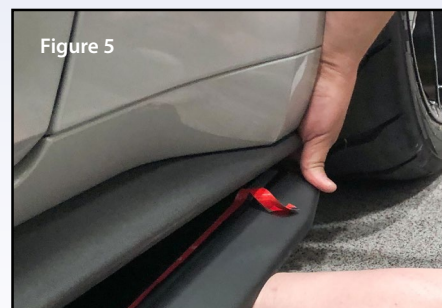
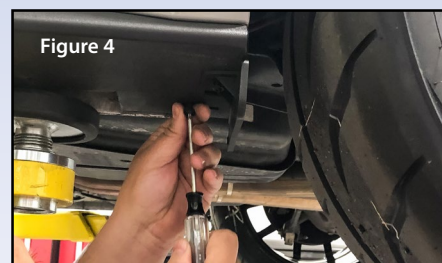
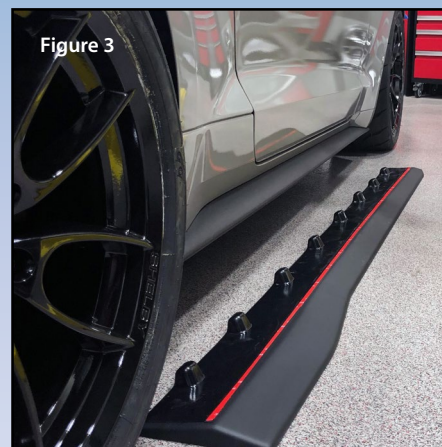
## INSTALLATION

5. Align the side splitter with the factory rocker panel using the molded humps as guides. Press the 8 factory plastic push pins into the holes. (figure 3)

6. Before installing hardware, peel back an edge of the red backing on the supplied double-sided tape, making sure to leave enough to pull the backing off once the part is fully mounted.

7. Install self-tapping Torx screws into smaller holes in the side splitters. (figure 4)

8. Slowly pull backing from tape horizontally while applying pressure to side splitter. (figure 5)



### Drake Muscle Cars

130 Cassia Way, Henderson, NV 89014-6615

Tel: (702) 853-2060 Fax: (702) 853-2061

[www.DrakeMuscleCars.com](http://www.DrakeMuscleCars.com)