

2015-2022 Rear Bumper Sag/ Body Gap Solution

[S550 Tail Light
Removal Video](#)

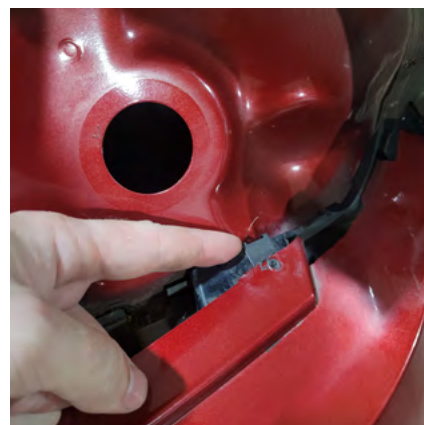
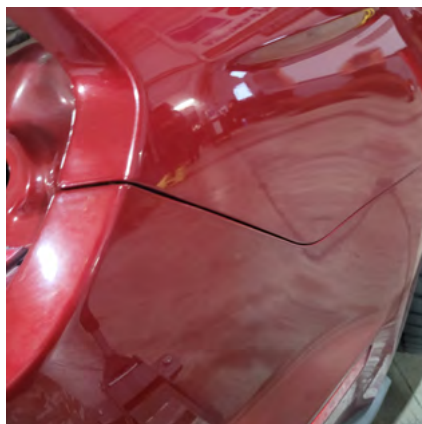


1. Remove tail lights. Refer to our S550 tail light removal article for instructions. *(Scan the QR code to view the article and removal video.)*
2. Insert the J-clip in the shown location closest to the quarter panel on the bumper bracket.
3. Place a jack with a foam pad or something equivalent on a jack and jack up the bumper pushing the body panels together. Do not jack the bumper up too much as this could potentially damage the paint.
4. For EcoBoost and GT models, use two nylon washers and place them between the J-clip and the rear bumper. GT350 owners will use one of the thick nylon washers provided in the kit.
5. Take one of the Phillips screws and place a thin nylon washer on it, then one of the small mastic washers.
6. Using the extra J-clip provided, line them up to gauge where the screw will be installed. Apply pressure to the rear bumper pushing forward, towards the front of the car. Use the screw to mark the location.
7. Place the screw in the marked location with a drill ready. With your free hand, apply pressure to the rear bumper again, push forward, and install the screw.
8. Repeat steps 2-7 for the other side.

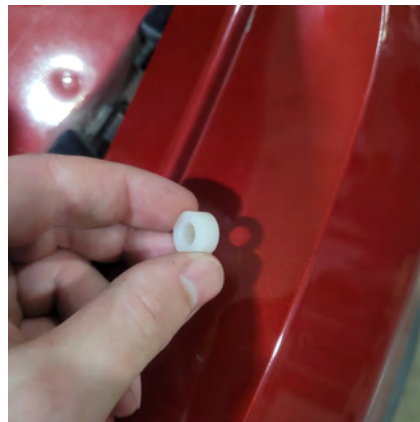
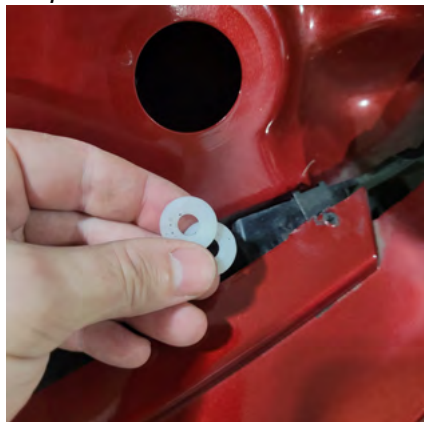
Step 2



Step 3



Step 4

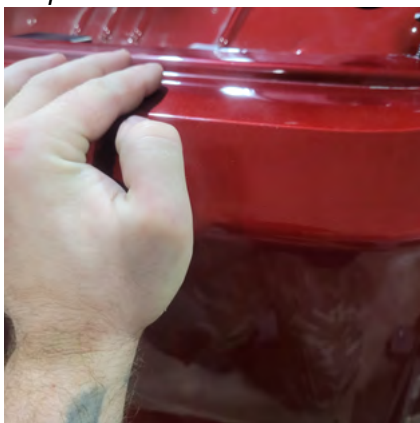


FIND YOUR NEXT MOD! SHOP 1000s OF PARTS ONLINE 24/7 @ LMR.COM

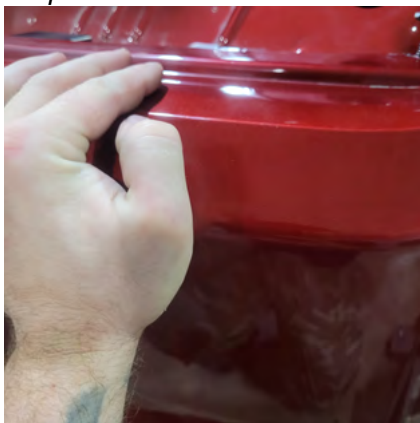
Step 5



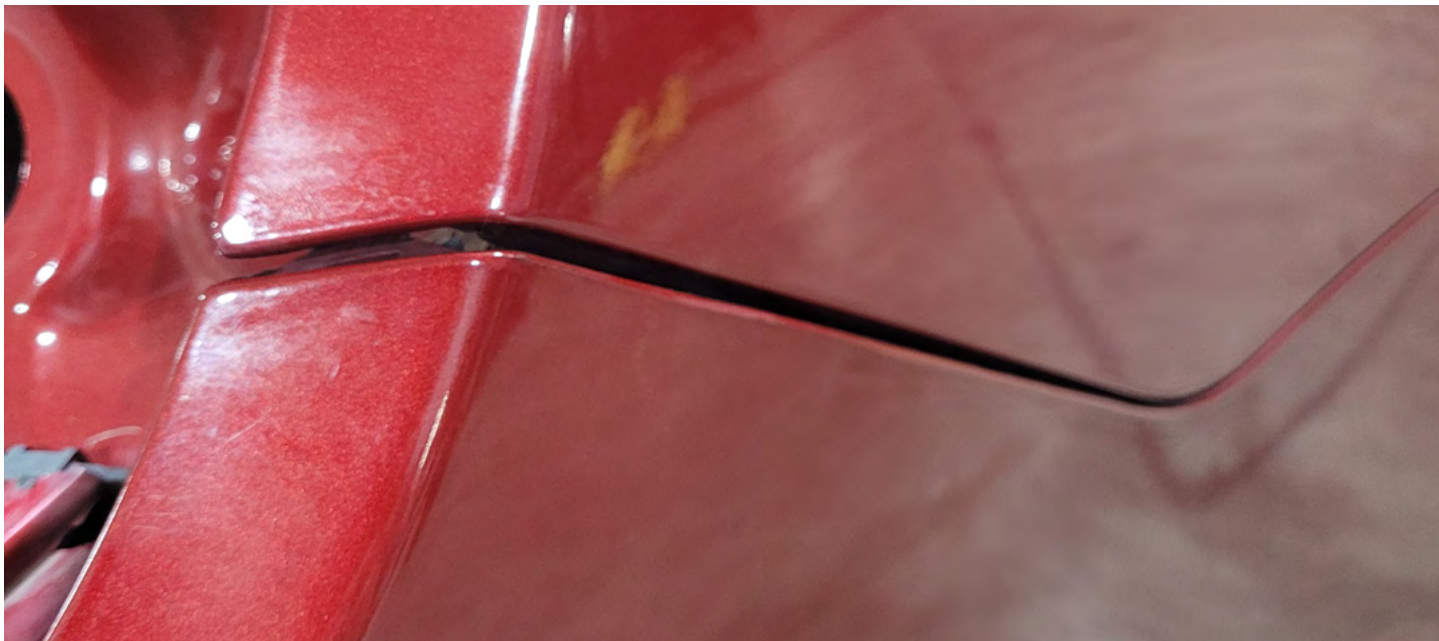
Step 6



Step 7



BEFORE



AFTER



Disclaimer

By using this instruction sheet, you agree that other than as expressly stated in the LMR Terms and Conditions (Agreement) or as required by the laws of the state of Texas or applicable United States federal law (Applicable Law), this instruction sheet is provided "AS IS" and LMR does not make any specific representations or warranties about this instruction sheet. For example, LMR does not make any warranties about: (a) the content provided in this instruction sheet; (b) any specific features of this instruction sheet, or its accuracy, reliability, or ability to meet your needs. The knowledge and experience level of users of this instruction sheet vary widely; if you do not have adequate knowledge and experience to use this instruction sheet and safely accomplish the tasks described, please hire a professional to assist you for your safety and the safety of your vehicle and others.

Limitation of Liability

Except as required by Applicable Law, LMR, its affiliates, officers, directors, employees and agents will not be responsible for any loss of profits, revenues, business opportunities, goodwill, or anticipated savings, indirect or consequential loss, punitive damages caused by:

- Errors, mistakes, or inaccuracies in this instruction sheet
- Personal injury or property damage resulting from your use of this instruction sheet

This limitation of liability provision applies to any claim regardless of whether the claim asserted is based on warranty, contract, tort or any other legal theory.

Use this information at your own risk. Any injury, damage, or loss that may result from use of the tools, equipment, products, or information contained in this instruction sheet is the sole responsibility of the user.

Indemnity

To the extent permitted by Applicable Law, you agree to defend, indemnify and hold harmless LMR, its Affiliates, officers, directors, employees, agents, information providers, licensors, and other partners from and against any and all claims, damages, obligations, losses, liabilities, costs or debt, and expenses (including but not limited to attorney's fees) arising from: (i) your use of and access to this instruction sheet; (ii) your violation of any term of the Agreement; (iii) your violation of any third party right, including without limitation any copyright, property, or privacy right; or (iv) any claim that your actions caused damage to LMR or a third party. The defense and indemnification obligations will survive this Agreement and your use of this instruction sheet.

FIND YOUR NEXT MOD! SHOP 1000s OF PARTS ONLINE 24/7 @ LMR.COM