

2016 Ford Mustang V8-5.0L

Vehicle &gt; Technical Service Bulletins

## ELECTRICAL - SPLICE BLOCK INFORMATION

General Service Bulletin (GSB):

Splice Block GSB

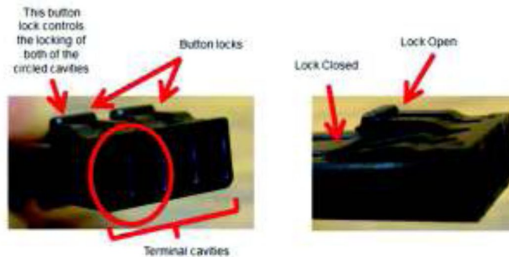
GSB Overview:

**Application:**

This GSB applies to the specific Splice Block used in 2013 and newer Fusion, Fusion Hybrid, MKZ, MKZ Hybrid, Mustang, Flex and MKT vehicles. There are other Splice Block types that are used on other models and a separate GSB is available.

**What are Splice Blocks and why are they used?:**

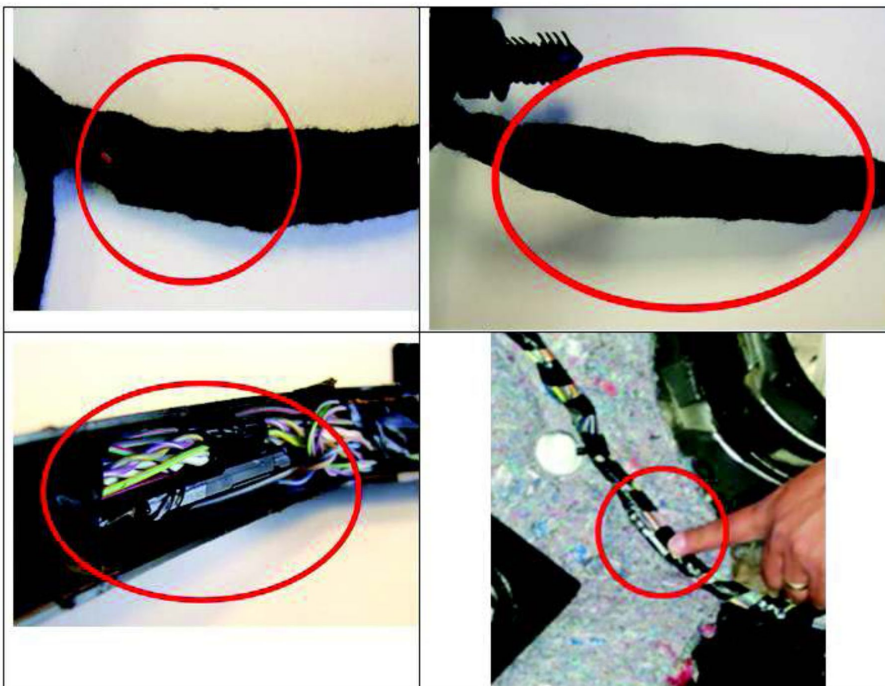
- They provide a connection point for two or more wires within the wiring harness
- They aid in wiring harness assembly, small size
- Help in the diagnostics and service (replacement of terminal ends) of the affected circuits



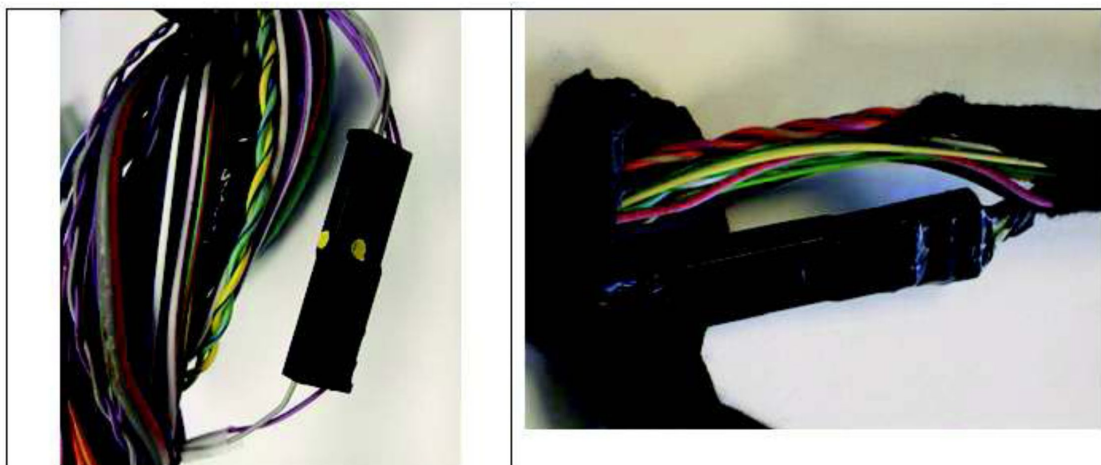
- Each splice assembly has 8 terminal cavities – 4 per side.
- There are 4 button locks on each splice assembly – 2 per side.
- Each button lock controls the locking of 2 terminal cavities (left side and right side).

## Splice Block GSB

What do Splice Blocks look like while still in the harness?

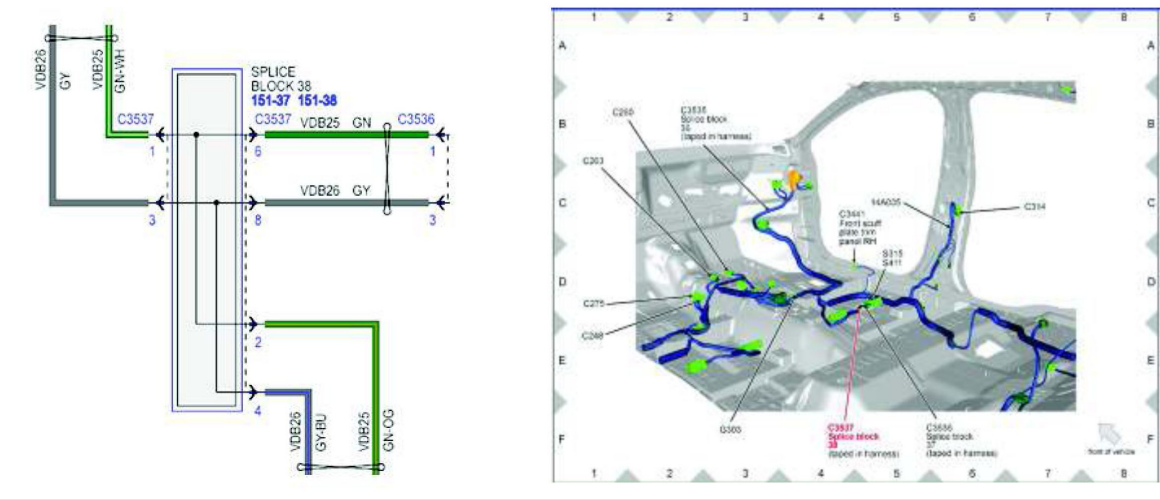


What do Splice Blocks look like when outside of the harness?



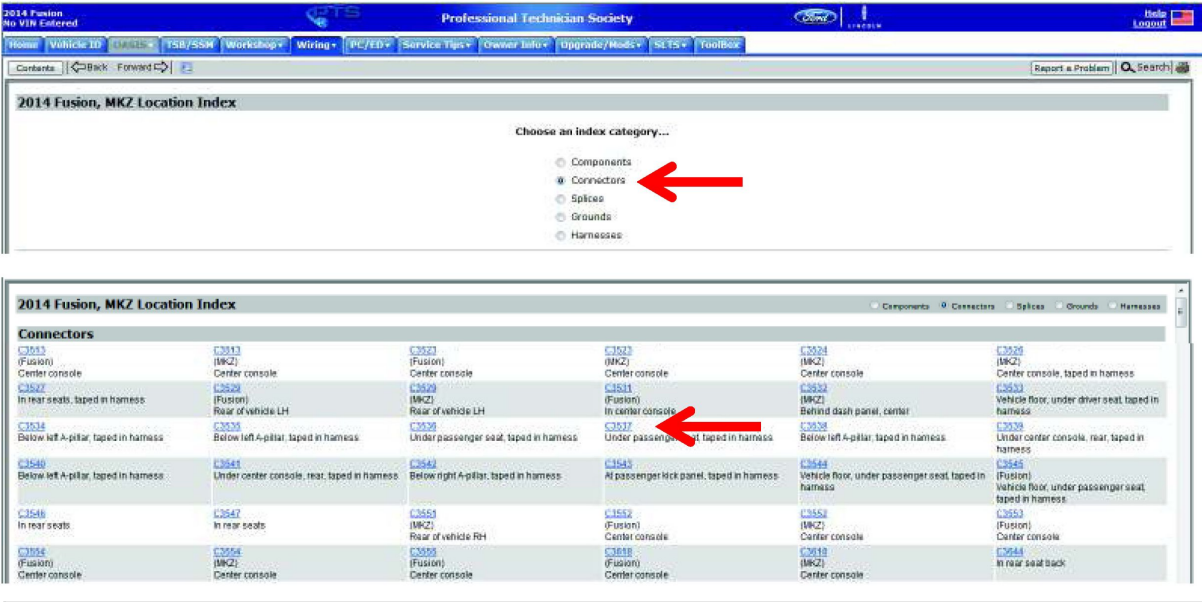
How are Splice Blocks shown in the PTS online Wiring Diagrams?

The first diagram shows how the Splice Blocks schematics are shown in the Wiring Diagram for various circuits, when used. By clicking on the connector number the approximate location of the Splice Block is shown in the Component Location Chart as shown in the second diagram. Actual locations of these blocks are usually within 300mm of that shown.



How are Splice Blocks shown in the PTS online Wiring Diagrams?

Splice Blocks are called out in Cell 152, Component Location Charts, within the ‘Connector’ category as the following example shows.



## How are Splice Blocks shown in the PTS online Wiring Diagrams?

The Connector View for the Splice Blocks are shown in Cell 150-1 of the Wiring Diagrams as the following example shows.

**2014 Fusion, MK2 Connector List**

Connector	Description	Color	Terminals	Base Part #	Service Pages
C3441	FRONT SCUFF PLATE TRIM PANEL RH				
C3501	DIRECT CURRENT/ALTERNATING CURRENT (DC/AC) INVERTER				
C3513	PASSIVE ANTI-THEFT SYSTEM FRONT ANTENNA				
C3523	HEATED SEAT SWITCH, REAR SEAT				
C3524	AC OUTLET				
C3526	SPLICE BLOCK 11				
C3527	SPLICE BLOCK 12				
C3528	PARKING BRAKE ACTUATOR MOTOR				
C3533	SELECTOR LEVER ASSEMBLY				
C3532	GEAR SHIFT MODULE (GSM)				
C3533	SPLICE BLOCK 33				
C3534	SPLICE BLOCK 34				
C3535	SPLICE BLOCK 35				
C3536	SPLICE BLOCK 36				
C3537	SPLICE BLOCK 37				
C3538	SPLICE BLOCK 38				
C3539	SPLICE BLOCK 39				
C3540	SPLICE BLOCK 40				
C3541	SPLICE BLOCK 41				
C3542	SPLICE BLOCK 42				
C3543	SPLICE BLOCK 43				
C3544	SPLICE BLOCK 44				
C3545	SPLICE BLOCK 45				
C3546	SPLICE BLOCK 46				
C3547	SPLICE BLOCK 47				
C3548	SPLICE BLOCK 48				
C3549	SPLICE BLOCK 49				
C3550	SPLICE BLOCK 50				
C3551	SPLICE BLOCK 51				
C3552	SPLICE BLOCK 52				
C3553	SPLICE BLOCK 53				
C3554	SPLICE BLOCK 54				
C3555	SPLICE BLOCK 55				
C3556	SPLICE BLOCK 56				
C3557	SPLICE BLOCK 57				
C3558	SPLICE BLOCK 58				
C3559	SPLICE BLOCK 59				
C3560	SPLICE BLOCK 60				
C3561	SPLICE BLOCK 61				
C3562	SPLICE BLOCK 62				
C3563	SPLICE BLOCK 63				
C3564	SPLICE BLOCK 64				
C3565	SPLICE BLOCK 65				
C3566	SPLICE BLOCK 66				
C3567	SPLICE BLOCK 67				
C3568	SPLICE BLOCK 68				
C3569	SPLICE BLOCK 69				
C3570	SPLICE BLOCK 70				
C3571	SPLICE BLOCK 71				
C3572	SPLICE BLOCK 72				
C3573	SPLICE BLOCK 73				
C3574	SPLICE BLOCK 74				
C3575	SPLICE BLOCK 75				
C3576	SPLICE BLOCK 76				
C3577	SPLICE BLOCK 77				
C3578	SPLICE BLOCK 78				
C3579	SPLICE BLOCK 79				
C3580	SPLICE BLOCK 80				
C3581	SPLICE BLOCK 81				
C3582	SPLICE BLOCK 82				
C3583	SPLICE BLOCK 83				
C3584	SPLICE BLOCK 84				
C3585	SPLICE BLOCK 85				
C3586	SPLICE BLOCK 86				
C3587	SPLICE BLOCK 87				
C3588	SPLICE BLOCK 88				
C3589	SPLICE BLOCK 89				
C3590	SPLICE BLOCK 90				
C3591	SPLICE BLOCK 91				
C3592	SPLICE BLOCK 92				
C3593	SPLICE BLOCK 93				
C3594	SPLICE BLOCK 94				
C3595	SPLICE BLOCK 95				
C3596	SPLICE BLOCK 96				
C3597	SPLICE BLOCK 97				
C3598	SPLICE BLOCK 98				
C3599	SPLICE BLOCK 99				
C3600	SPLICE BLOCK 100				

**Connector: C3537**

**Pin 1 - VDB25 (GN-WH) - CONNECTOR - DIAGNOSTIC # CAN BUS HIGH SPEED 2 (UPPER) HIGH, Gauge 20**

Pin	Circuit	Gauge	Circuit Function	Qualifier	Terminal Part Number
1	VDB25 (GN-WH)	20	CONNECTOR - DIAGNOSTIC # CAN BUS HIGH SPEED 2 (UPPER) HIGH		9U5T-14474-YA
2	VDB25 (GN-OB)	20	CONNECTOR - DIAGNOSTIC # CAN BUS HIGH SPEED 2 (UPPER) HIGH		9U5T-14474-DA
3	VDB25 (GY)	20	CONNECTOR - DIAGNOSTIC # CAN BUS HIGH SPEED 2 (UPPER) LOW		9U5T-14474-YA
4	VDB25 (GY-BU)	20	CONNECTOR - DIAGNOSTIC # CAN BUS HIGH SPEED 2 (UPPER) LOW		9U5T-14474-DA
5	-	-	Not Used		N/A
6	VDB25 (GN)	20	CONNECTOR - DIAGNOSTIC # CAN BUS HIGH SPEED 2 (UPPER) HIGH		9U5T-14474-YA
7	-	-	Not Used		N/A
8	VDB25 (GY)	20	CONNECTOR - DIAGNOSTIC # CAN BUS HIGH SPEED 2 (UPPER) LOW		9U5T-14474-YA

Terminal Part Number	Service Part Number
9U5T-14474-YA	DU2Z-14474-AA
9U5T-14474-DA	DU2Z-14474-AA

On some models this page provides information as to whether a Terminal is available and provides the part number

## What type of concerns can result from a poor wiring connection within a Splice Block?

- At the Splice Block, pin push outs, terminal crimps, wire damage etc. can result in open, shorted or grounded circuit, which may cause various issues that could be intermittent.

## How are the circuits within a Splice Block tested?

- Power, ground, continuity checks for specific circuits that may contain a Splice Block are listed in an applicable Workshop Manual Pinpoint Test.

## How are the circuits and terminals with a Splice Block repaired?

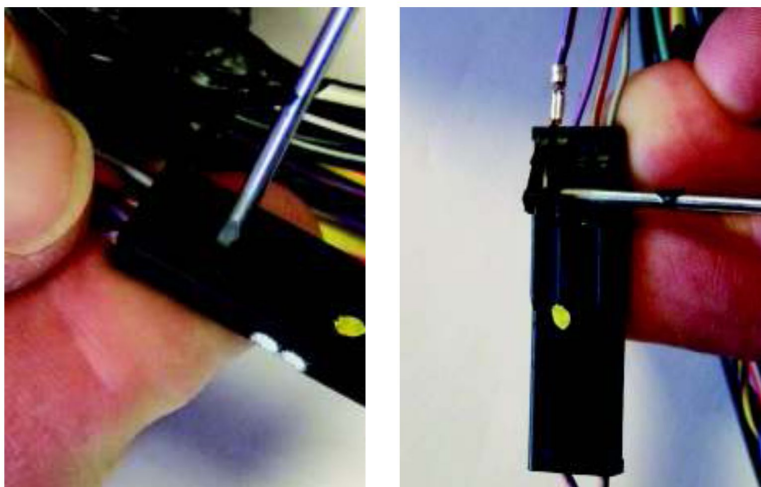
- Depending on the severity of the concern with the Splice Block there are several repair options
  - If there is water intrusion to the connection, the splice block is physically damaged, or multiple circuits are affected, remove and splice as needed.
  - If the wire is pulled out of the terminal. One wire is damaged but has enough length to replace the terminal, replace the terminal and re-insert into splice block.

Please refer to Cell 5 of the Wiring Diagram for wiring / wiring terminal repair procedures.



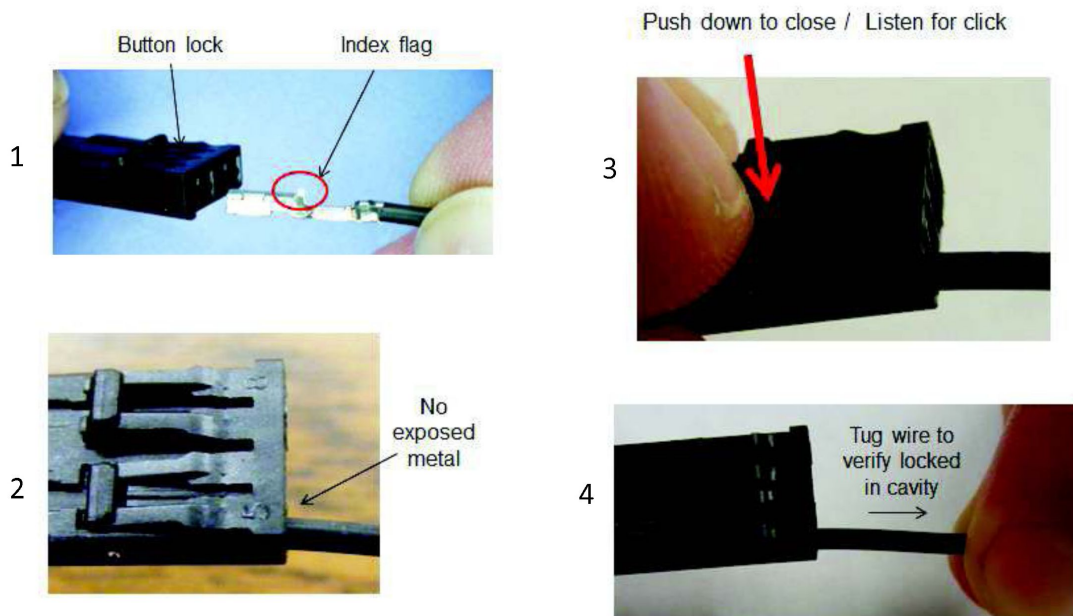
### How are the terminals pins released from and installed in a Splice Block?

The terminals can be released from the Splice Block by lifting up on the locking tab as shown below. Terminals can be reinstalled into the Splice Block but insure the locking tab is fully seated to retain the terminal.



### Terminal Replacement

Terminals may be available and can be replaced per the procedure below



Information on the specific Splice Blocks used in 2013 and newer Fusion, Fusion Hybrid, MKZ, MKZ Hybrid, Mustang, Flex and MKT vehicles.

**NOTE:** This information is not intended to replace or supersede any warranty, parts and service policy, Work Shop Manual (WSM) procedures or technical training or wiring diagram information.

