

PART #350 & #351

INSTRUCTIONS FOR INSTALLING KEY LOCK

STEP 1: Remove key cylinder form factory deck lid or hatch.

STEP 2: When installing key cylinder clip, follow **Fig. A.**

Key cylinder clip front profile

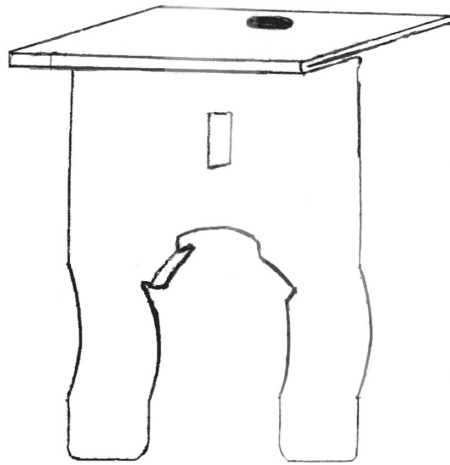
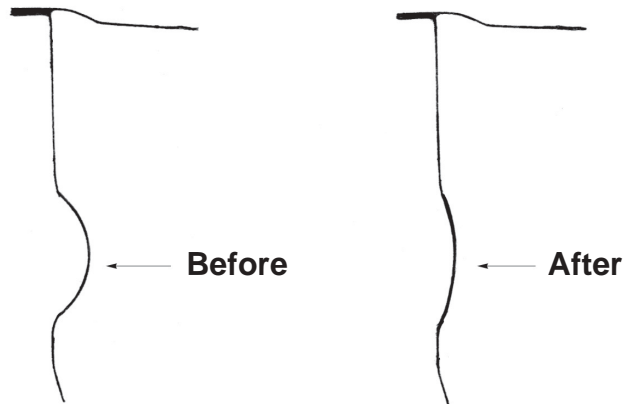


Fig. A.
side profile of clip



PART # 350
NO ADDITIONAL HARDWARE REQUIRED

PART # 351		
QTY	DESCRIPTION	HARDWARE #
8	1/4" x 20 x 3/4" BOLTS	92865A540
8	1/4" x 20 WASHERS	90108A029
2	STOPPERS	9405K54
2	BALL STUD	9512K73

