



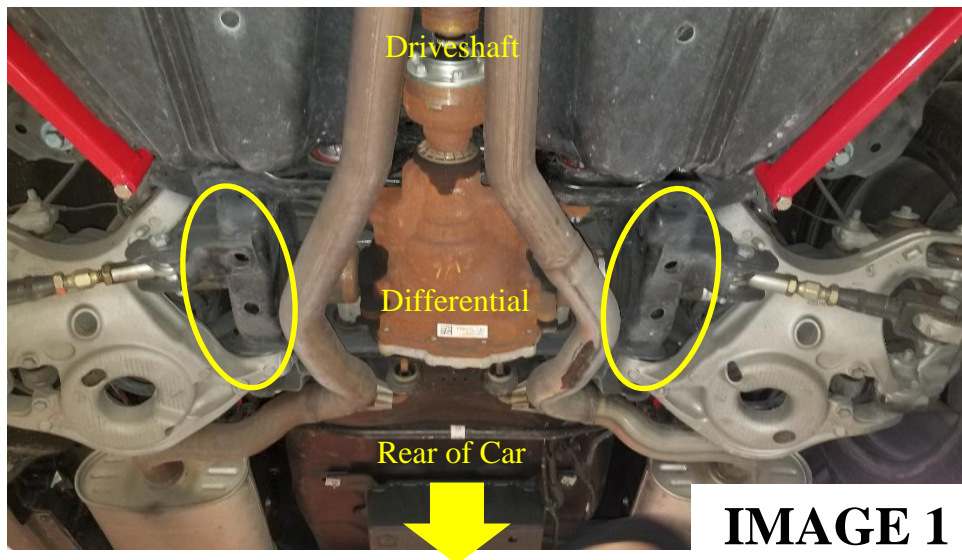
CB762 INSTALLATION INSTRUCTIONS

Tools required:

- 13mm, 15mm, 21mm Socket

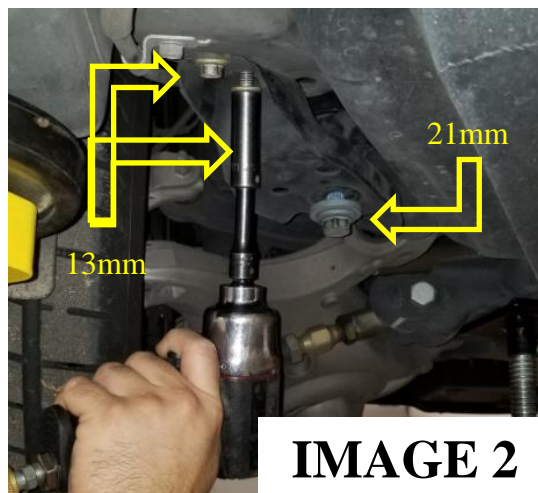
Instructions:

1. Lift vehicle and support with jack stands under the rocker pinch welds.
2. Support the Rear Cradle with additional jacks in the areas circled as shown in **Image 1**.
It is recommended that you only replace the Braces in pairs and not all four Braces at the same time.
(This is **critical** because you will be removing the main supports that hold the Rear Cradle to the chassis)



Front Chassis Brace:

3. Loosen the Front Cradle bolt with a 21mm socket shown in **Image 2**.
4. Remove the two Cradle Plate Bolts with a 13mm socket also shown in **Image 2** and allow the Cradle Plate to hang.

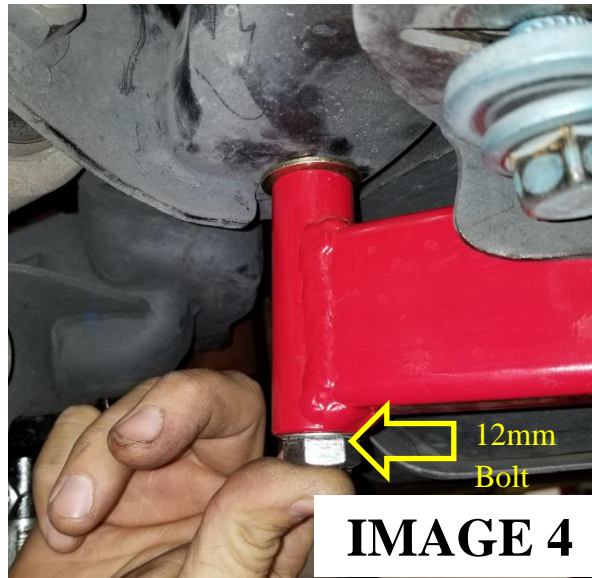
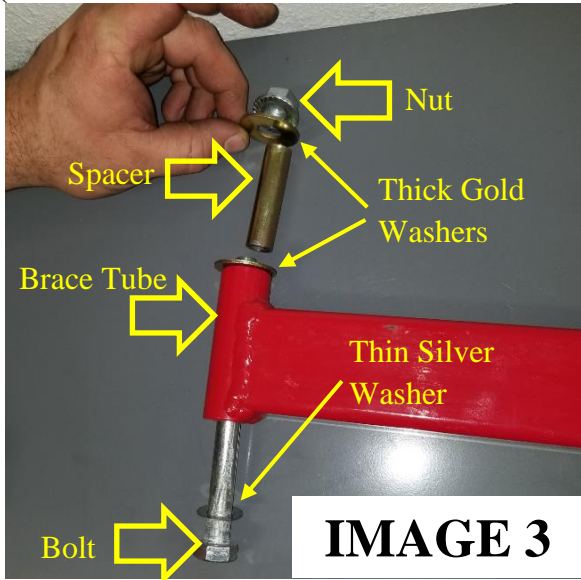


WWW.BMRSUSPENSION.COM

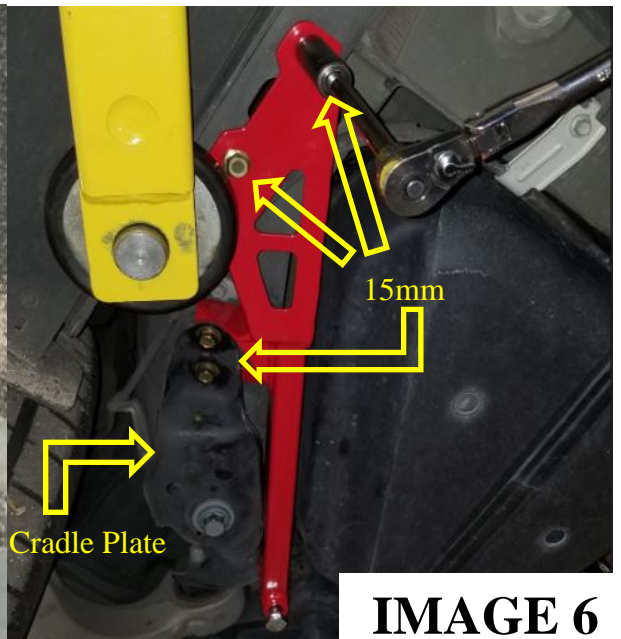
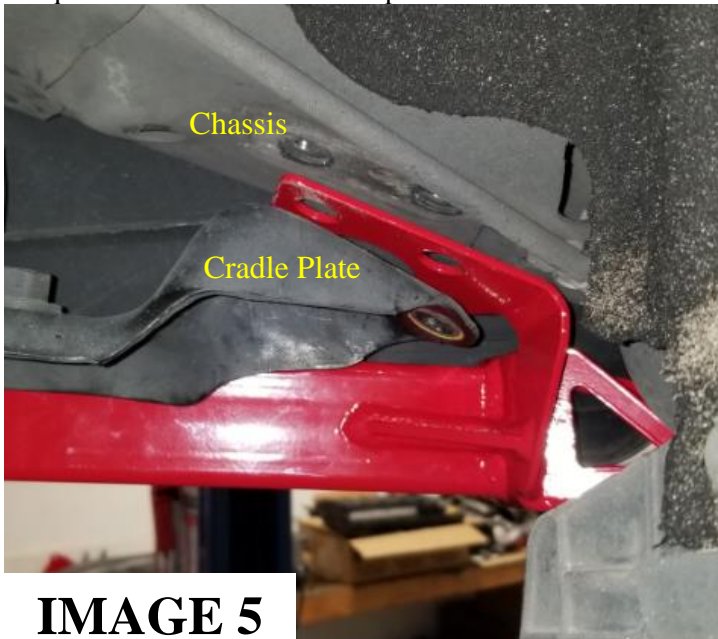
This product is an aftermarket accessory and not designed by the vehicles manufacturer for use on this vehicle. As such, buyer assumes all risk of any damage caused to vehicle/person during installation or use of this product.

CB762 INSTALLATION INSTRUCTIONS

5. Install the Chassis Brace by inserting the long 12mm bolt thru the rear of the Brace Tube. (From Bottom-Up, the components order is; Bolt, Thin Silver Washer, Brace Tube, A Thick Gold Washer, the Spacer going through the Crossmember, another thick Gold Washer on top of the Crossmember and then the Nut, shown in order as in **Image 3**) Then insert the bolt assembly and screw the nut on top of the Cradle Frame as shown in **Image 4**. (DON'T NOT TIGHTEN ANY BOLTS UNTIL ALL BOLTS HAVE STARTED TO BE THREADED)



6. Position the Chassis Brace with the Cradle Plate over top of it as shown in **Image 5**.
 7. Insert the remaining four 10mm bolts provided; two through the Cradle Plate and two into the Chassis as shown in **Image 6**.
 8. Torque all Front Brace bolts to spec as stated at the end of the instructions.





CB762 INSTALLATION INSTRUCTIONS

Rear Chassis Brace:

9. Remove Front Cradle bolt with a 21mm socket shown in **Image 7**.
10. Remove the Rear Sway Saddle bolts with a 13mm socket as in **Image 8**.

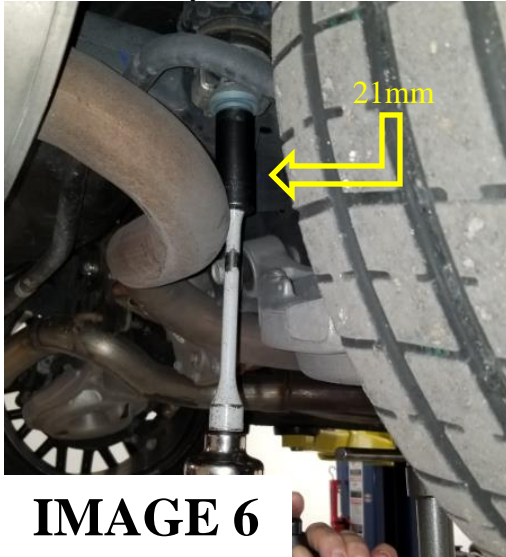


IMAGE 6

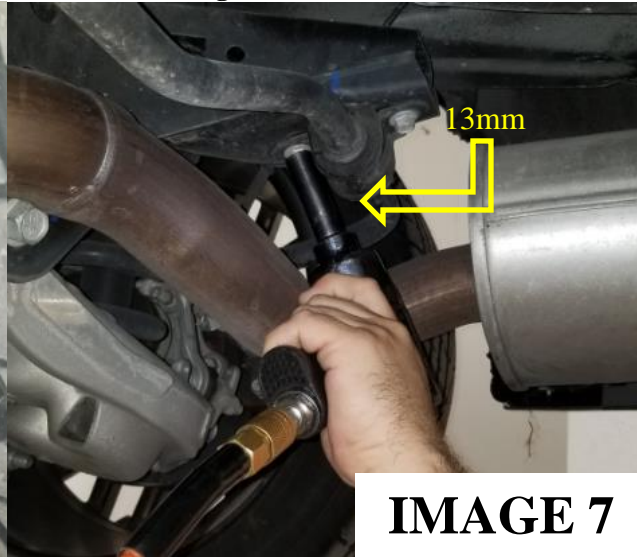
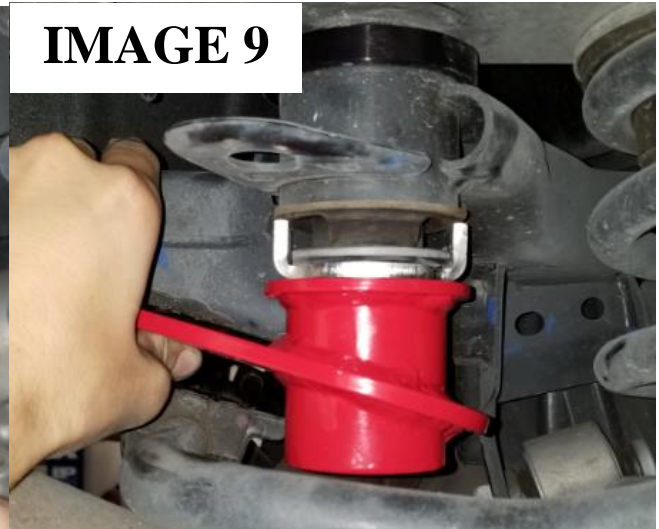
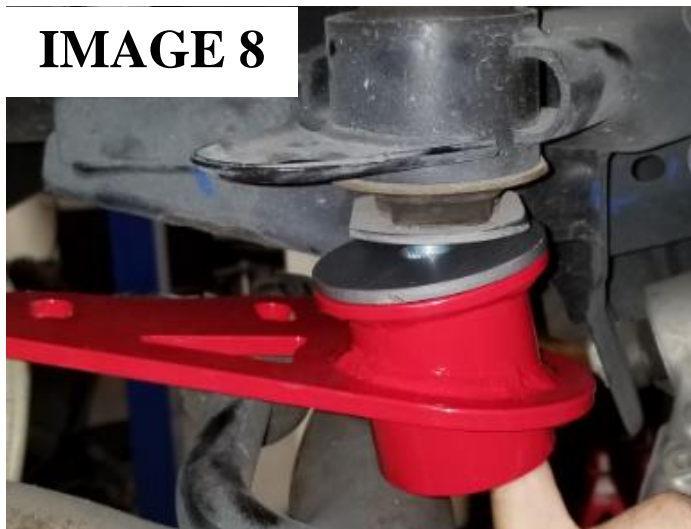


IMAGE 7

11. **If you are using stock bushings:** use the provided Stainless Steel spacer and place it in between the Rear Chassis Brace and the stock bushing as shown in **Image 8**.
12. **If you are using BMR-CB005 (Cradle Lock out Kit):** Re-use the Cradle Lock out Saddle Spacer as shown in **Image 9**.



13. Use the bolts provided and using a 15mm socket, replace the Rear Sway Bar Mounting Saddle as shown in **Image 10**.
14. Torque all Rear Brace bolts to spec as stated at the end of the instructions.

WWW.BMRSUSPENSION.COM

This product is an aftermarket accessory and not designed by the vehicles manufacturer for use on this vehicle. As such, buyer assumes all risk of any damage caused to vehicle/person during installation or use of this product.



CB762 INSTALLATION INSTRUCTIONS

IMAGE 10



Bolt Torque Spec

15mm headed bolts (Front Cradle Chassis Brace/ Rear Sway Bar Saddle) = 40 lbft

19mm headed bolt (Front Cradle Chassis Brace) = 80 lbft

21mm Cradle bolts (Main Cradle to Chassis) = 129 lbft

WWW.BMRSUSPENSION.COM

This product is an aftermarket accessory and not designed by the vehicles manufacturer for use on this vehicle. As such, buyer assumes all risk of any damage caused to vehicle/person during installation or use of this product.