



TO: All Dealers and installers

Date: 04/20/2015

| |
|--|
| Vehicle Identification Number (VIN) |
| VIN List Included |

SUBJECT: Service Bulletin #042015CS- 2015 PCM Reflash Update
2015 Ford Mustang GT vehicles with ROUSH® Supercharger retail kit installation completed on or before April 1, 2015

PROGRAM TERMS

This program provides owners of 2015 Ford Mustang GT built before April 1, 2015 an upgraded PCM calibration.

VEHICLES COVERED BY THIS PROGRAM

2015 Ford Mustang GT Manual transmission vehicles with ROUSH® supercharger kit installed before April 1, 2015.

REASON FOR PROVIDING

All 2015 Mustang 5.0L manual transmission supercharger kits installed before April 1, 2015 will experience a loss of boost after extended driving.

Updated step to installation manual for removal of tab on the front cover, for added intercooler hose clearance.

DEALER SERVICE ACTION

Please contact any customers that have installed the Ford Racing®/ ROUSH® supercharger kit to arrange for their vehicle to be brought in to complete this service action.

ROUSH WILL SUPPLY:

- 2015 Mustangs: PCM voucher card eligible for one (1) PCM Re-Flash.

If a dealer is not able to perform the update, then authorization will be provided to ship the PCM to Roush for programming.

DEALER INSTRUCTIONS

- Re-flash the PCM with the updated calibration file using the ROUSH® (one time use only) voucher card.
- All vehicles will require modification to tab on engine to improve hose clearance (see appendix A).

- When operation is complete, Dealer MUST email the Final Invoice back to ROUSH® Warranty at rppwarranty@roush.com to receive final payment.
- Please reference your ROUSH® claim authorization number on the final invoice for payment.

LABOR ALLOWANCES

| Description | Labor Operation | Labor Time |
|--------------------------|------------------------|--------------------------|
| Re-flash PCM | 12650D6 | .5 Hour@ Ford Labor Rate |
| Grinding of aluminum tab | MTIME | .2 Hour@ Ford Labor Rate |

AFFECTED PART DESCRIPTION

2015 Mustang GT Manual transmission:

| Part Number | Description | Quantity/Vehicle |
|--------------------|-----------------------------|-------------------------|
| P1315-P1-AA | 2015 Phase 1 - Voucher Card | 1 |

RENTAL VEHICLES

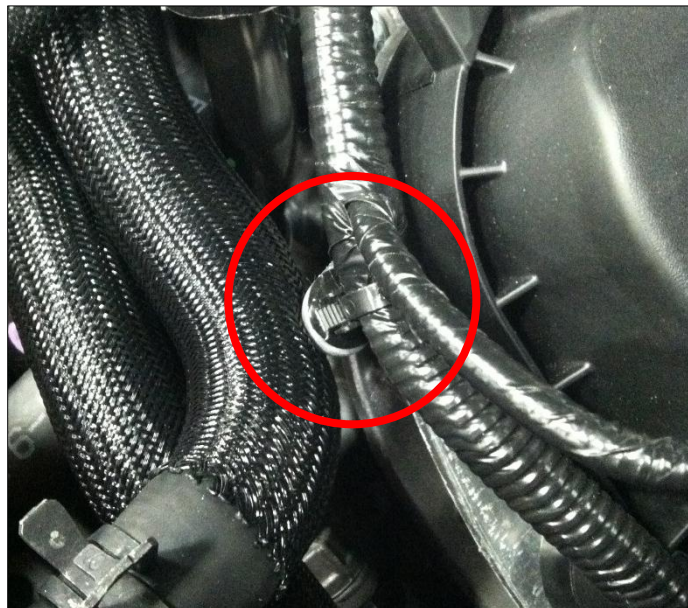
Rental vehicle coverage is NOT authorized under this program.

QUESTIONS/ASSISTANCE

Questions may be directed to:
 ROUSH® Warranty Department
rppwarranty@roush.com

APPENDIX A

Modification to front cover to improve clearance to intercooler hose.



Step 1 – Locate the wiring retention tab on the front cover in front of the driver side cam cover. Using a trim tool, remove the wire harness retainer from the tab.



Step 2 – Retain the harness and hose aside and using a suitable cutting tool (cut off wheel, air saw, etc.) remove the tab from the front cover so it is flush with the edge of the cam cover. Use caution to not cut or damage any of the surrounding components.



Step 3 – Using a suitable grinding tool (Air Grinder, hand file) remove any burrs and sharp edges. Remove the wiring harness push pin retainer from the wire harness.

