

F O R D 1 9 9 4

BRONCO



1994 BRONCO

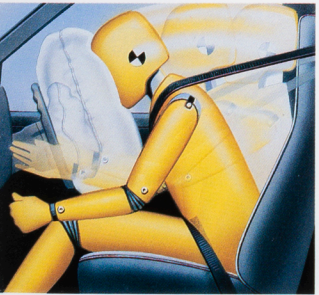
It was the Ford Bronco that introduced to adventuresome, independent-minded people across America the power, comfort and versatility of the full-size sport utility vehicle. Ever since, 4-wheeling in a big Bronco around town and in the back country has gotten better with every passing year. The reason is, here at Ford, The Best Never Rest.

Ford Trucks.
The Best Never Rest.™

Bronco for 1994 features a driver-side air bag designed to supplement your safety belts. Under the Bronco hood are 5 liters of standard V-8 muscle. You also have a computer-controlled 4-wheel anti-lock braking system.

There are, of course, other big features that have helped make Bronco the best seller* in its class, such as the Twin-Traction Beam independent front suspension. The innovative Touch-Drive option, too. And best of all, the tradition of being *Built Ford Tough!*

*Based on model year manufacturers' retail deliveries through June, 1993.



Bronco now comes with a driver air bag, designed to supplement the safety belt.



BRONCO EDDIE BAUER

For the ultimate in Bronco 4-wheeling, this is it. The Eddie Bauer Bronco, as big in style, comfort and convenience as it is rugged and powerful. The Eddie Bauer sports a unique two-tone paint treatment plus forged deep-dish aluminum wheels. Inside are such amenities as CFC-free air conditioning, Privacy™ glass, rear defroster, illuminated visor mirrors, dual beam dome/map light, headlamps-on audible alert, and floor console. And new features, too: the electrochromic (auto-dim) mirror, an overhead console, a cargo net and retractable cover. And to the power of the 5.0-liter V-8 Eddie Bauer adds the convenience of the electronic 4-speed automatic transmission.



Above: The Bronco Eddie Bauer in unique two-tone Electric Red Clearcoat Metallic over Tucson Bronze Clearcoat.

At left: The Bronco Eddie Bauer interior, shown in Medium Mocha, includes cloth captain's chairs (optional leather seating surfaces shown) and power lumbar supports among its numerous standard features. New for '94 is the electrochromic rearview mirror that automatically dims to reduce headlamp glare. The Eddie Bauer garment bag and duffel bag are complimentary.



Below: The Eddie Bauer instrument panel with black leather-wrapped steering wheel, speed control and tilt wheel.

Some equipment shown on these pages is optional.

BRONCO XL AND XLT

You'll find in the Ford Bronco lineup of full-size utilities a lot of great choices in style and comfort to match your particular style of driving.

There's the top-of-the-line Eddie Bauer (see pages 2-3). And the superbly equipped Bronco XLT featured here.

In the XLT's list of standard features are cloth-upholstered captain's chairs with power lumbar support (leather seating surfaces are optional), full-length color-keyed cloth headliner and carpeting, speed control/tilt steering wheel, tachometer, and black leather-wrapped steering wheel.

Then there's the Bronco XL. It comes well equipped with a newly available driver-side air bag to supplement the safety belts, new partial headliner, a Power Point outlet for

plugging in small electrical accessories, electronic AM/FM stereo radio with digital clock, interval windshield wipers, vinyl front bucket seats, and a great deal more.

The comfortable 3-passenger rear bench seat can be folded to take advantage of Bronco's maximum 78.8 cu. ft. of versatile cargo space.

Power your Bronco with the standard 5.0- or optional 5.8-liter multi-port electronic fuel-injected V-8.

Auto-locking hubs, 2-speed transfer case with skid plates are standard. So is a computer-controlled 4-wheel anti-lock braking system.

At right: Bronco XLT in Royal Blue Clearcoat Metallic, one of the new lustrous Clearcoat paints now available. Below: the XLT interior in Opal Grey. Some equipment shown is optional.



STANDARD FEATURES, OPTIONS, PAINT AND TRIM COLORS

PREFERRED EQUIPMENT PACKAGES AND OPTIONS

Note: Package content is subject to change.

P = Included in Package S = Standard O = Optional

	XL 680A	XLT 683A	XLT 684A	Eddie Bauer 686A
Climate Control Group:				
CFC-free air conditioning	P	P	P	S
Rear window defroster	P	P	P	S
Wheel Group:				
Outside, swing-away spare tire carrier	P	P	P	P
Argent styled steel wheels	P	S	S	—
Chrome styled steel wheels	—	P	P	—
Luxury Group:				
Privacy™ glass	—	—	P	S
Bright electric mirrors	—	—	P	P
Light and Convenience Group B (1)	—	—	P	S
Power door locks/windows	—	—	P	P
Electric AM/FM stereo radio with cassette player, digital clock	—	—	P	P
Premium electronic AM/FM stereo radio with cassette player, digital clock	—	O	O	O
Premium electronic AM/FM stereo radio with CD player, digital clock	—	O	O	O
Cloth and vinyl bench	O	O	—	—
Captain's chairs with leather seating surface (including power lumbar)	—	—	O	O
Security group (2)	—	—	O	O
Light and Convenience Group A (3)	—	—	O	S
Bright low mount swing-away mirrors	O	O	O	—
Retractable cargo cover	—	O	O	P
Cargo net	—	O	O	S
Deluxe two-tone paint	—	O	O	—
Forged deep-dish aluminum wheels	—	—	O	S
5.0L EFI V-8 with electronic 4-speed automatic overdrive transmission	O	O	O	S
5.8L EFI V-8 with electronic 4-speed automatic overdrive transmission	O	O	O	O
Manual locking hubs	O	O	O	—
Electric Touch Drive 4x4	—	—	O	O
Engine block heater	O	O	O	O
Trailer Towing Package (4)	O	O	O	O

(1) Headlamps-on audible alert, underhood light, dual beam dome/map light, and floor console. (2) Remote keyless entry system and anti-theft alarm system. (3) Electrochromic rearview mirror and illuminated visor vanity mirrors. (4) Trailer wiring harness, heavy-duty turn signal flasher, rear stabilizer bar (front is standard), quad front and heavy-duty rear shock absorbers, heavy-duty battery — 84 amp-hr./850 CCA (standard with Eddie Bauer), and super engine cooling.

COLORS AND TRIMS

Exterior Paint Colors

XL, XLT	Interior Trim Colors			
	Royal Blue	Ruby Red	Opal Grey	Medium Mocha
Electric Red Clearcoat Metallic		■	■	
Iris Clearcoat Metallic			■	
Brilliant Blue Clearcoat Metallic	■		■	
Royal Blue Clearcoat Metallic	■		■	
Deep Forest Green Clearcoat Metallic			■	■
Tobago Green Clearcoat			■	
Light Opal Clearcoat	■	■	■	
Oxford White	■	■	■	■
Raven Black		■	■	■

Eddie Bauer*

Desert Copper Clearcoat				■
Electric Red Clearcoat Metallic				■
Royal Blue Clearcoat Metallic				■
Deep Forest Green Clearcoat Metallic				■
Raven Black				■

*Includes unique Tucson Bronze Clearcoat two-tone paint treatment.

MAJOR BRONCO STANDARD FEATURES

Exterior

Aero-halogen headlamps with high-impact lenses
Bright headlamp surround
Chrome grille
Bumpers: chrome front (XL); chrome front with black rub strip (XLT, Eddie Bauer); chrome rear step with 4,000-lb. trailer tow rating
Tinted glass all around
Privacy™ glass and unique "Eddie Bauer" two-tone paint treatment (Eddie Bauer)
Mirrors, aero-styled manual: black (XL); bright (XLT, Eddie Bauer)
Black windshield moldings
Swing-down tailgate with power window
Wheel trim: Bright hub caps on argent steel wheels (XL); argent styled steel wheels (XLT); forged deep-dish aluminum wheels (Eddie Bauer)

Interior

Driver-side air bag to supplement the safety belts
Front seats: Vinyl bucket (XL); cloth captain's chairs with power lumbar support (XLT, Eddie Bauer)
3-passenger rear flip/fold bench seat
Full-length color-keyed cloth headliner (half-length in XL)
Tachometer (except XL); voltmeter, oil pressure and temperature gauges with indicator lights
Power Point electrical accessory outlet
Electronic AM/FM stereo radio with digital clock
Speed control/tilt steering wheel (except XL)
Black leather-wrapped steering wheel (except XL)
Interval windshield wipers
Additional Eddie Bauer features: CFC-free air conditioning; light/convenience group (headlamps-on audible alert, underhood light, dual beam dome/map light, floor console); electrochromic (auto-dim) rearview mirror; overhead console (compass, outside temperature display, map lights, garage door opener storage, and storage pocket); cargo net; rear window defroster; illuminated visor mirrors; floor mats; auxiliary visors

Functional

5.0L EFI V-8 engine with 5-speed manual overdrive transmission (electronic 4-speed automatic overdrive transmission in Eddie Bauer)

Twin-Traction Beam independent front suspension with stabilizer bar

Heavy-duty gas-pressurized shock absorbers

4-wheel power anti-lock brake system

Power steering

32-gallon fuel tank

Automatic front locking hubs; 2-speed transfer case with skid plate

Five P235/75R15XL black sidewall all-season tires (see your Ford Dealer for optional all-season and all-terrain tire availability and usage)

2,450-lb. front springs; 3,770-lb. rear springs

ENGINE SPECIFICATIONS

5.0-liter Multi-Port EFI V-8

Bore and stroke: 4.00x3.00

Compression ratio: 9.0

Horsepower: 205 @ 4,000 rpm*

Torque, lbs./ft.: 275 @ 3,000 rpm*

5.8-liter Multi-Port EFI V-8

Bore and stroke: 4.00x3.50

Compression ratio: 8.8

Horsepower: 210 @ 3,600 rpm

Torque, lbs./ft.: 325 @ 2,800 rpm

*With manual transmission.

BRONCO MAXIMUM TRAILER WEIGHTS

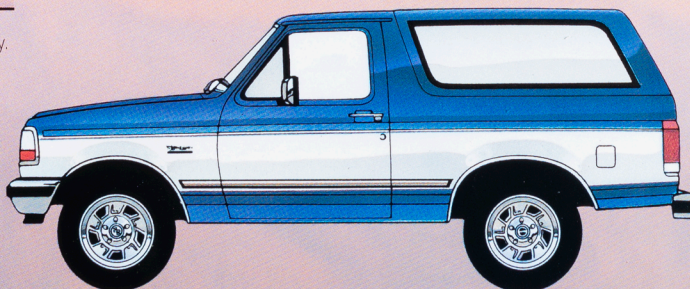
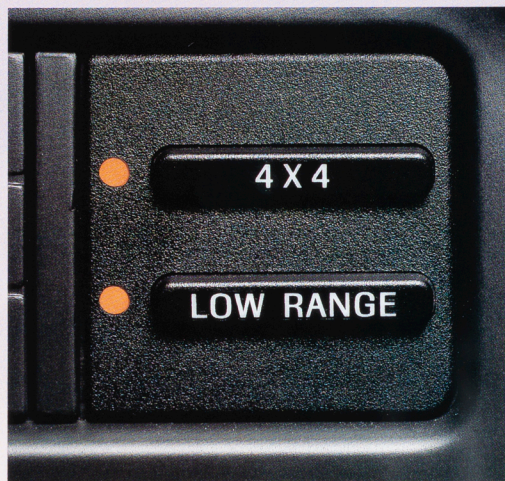
	Axle Ratio	GCWR Max.	Bronco 4x4
Automatic			
5.0L EFI V-8	3.55	11,500	6,600
5.8L EFI V-8	3.55	12,000	7,000
Manual			
5.0L EFI V-8	3.55	7,800	3,000

Note: Engine/axle ratio combinations may not be available in all areas. See your dealer for availability. Maximum trailer weights shown must be reduced by passenger and cargo weight in the towing vehicle. The combined weight of the towing vehicle (including passengers, hitch and cargo) and the loaded trailer must not exceed the Gross Combined Weight Rating (GCWR).

PRODUCT CHANGES

Following publication of the catalog, certain changes in standard equipment, options, prices and the like, or product delays, may have occurred which would not be included in these pages.

Your Ford Dealer is your best source for up-to-date information. Ford Division reserves the right to change product specifications at any time without incurring obligations.



Deluxe two-tone paint (XLT only) includes accent color on the center bodyside area and the tailgate, between the mid-bodyside tape stripe to just below the lower bodyside protection molding.

Above: Push buttons on the instrument panel, automatic hub locking, and instantaneous transfer case engagement make the optional Touch Drive electric shift transfer case the ultimate in 4-wheeling convenience.

The optional electronic 4-speed automatic transmission features a driver-activated transmission control switch that prevents upshifting into the overdrive 4th gear.

The optional cargo net (standard in Eddie Bauer) and retractable cargo cover are new Bronco features.

In the overhead console, standard in Eddie Bauer, are a compass, outside temperature display, map lights, garage door opener storage, and storage pocket.

BUMPER-TO-BUMPER COVERAGE

The 36-month/36,000-mile bumper-to-bumper coverage of Ford's new vehicle limited warranty covers the complete vehicle (except tires, battery, service adjustments and other items covered under separate provisions) against defects in factory-supplied materials or workmanship. For complete information, see your Ford Dealer.



Optional Ford Extended Service Plans can cover major components on new Ford cars and light trucks for longer than the vehicle's basic warranty. Your Ford Dealer has full details.

ROADSIDE ASSISTANCE PROGRAM

Every new Ford includes the assurance of an emergency Roadside Assistance Program provided by Ford Auto Club, Inc. during the 3-year/36,000-mile bumper-to-bumper warranty period. Help is a toll-free phone call away 24 hours a day, anywhere in the continental United States should you need any towing assistance, fuel delivery, tire change, a jump start or even help when you're locked out of your truck. Ask your dealer for complete details on the Ford Roadside Assistance Program and a copy of this limited warranty.

FORD CITIBANK CREDIT CARD

Using your Ford Citibank Visa® or MasterCard® could earn you hundreds, even thousands of dollars from Ford

toward the purchase or lease of a new Ford, Lincoln or Mercury product. To apply or get more information, call 1-800-374-7777. Or visit a Ford or Lincoln-Mercury dealer, or a branch office of Citibank.



Ford Credit is a full service company that makes a wide variety of financing and leasing programs available to qualified buyers through the Ford Dealer of your choice. Through Ford Credit's financing or Red Carpet leasing, arrangements suited to your special needs can be made quickly and conveniently right at the dealership. Ask your Ford Dealer for the facts on any of Ford Credit's financing or lease plans.



"Tread Lightly" is an educational program designed to increase public awareness of land-use regulations and responsibilities in our nation's wilderness areas. Ford joins the U.S. Forest Service and Bureau of Land Management in encouraging you to help preserve our national forests and other public and private lands by "treading lightly."

OPTIONS AVAILABILITY

Options shown or described in this catalog are available at extra cost and may be offered only in combination with other options or subject to additional ordering requirements or limitations.



Printed on recycled paper
10% post-consumer waste