



WATSON RACING 4- or 6-POINT CARPET KIT INSTALLATION INSTRUCTIONS

2005-2014 Mustang

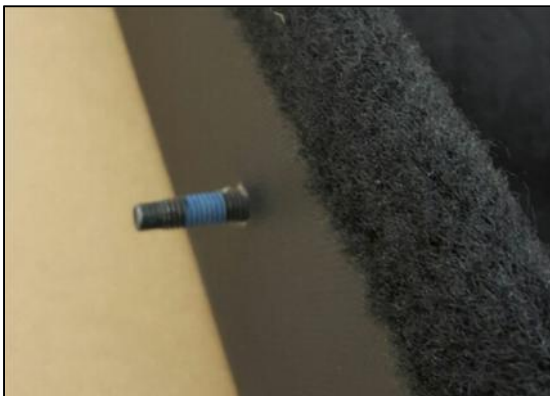
p/n WR-4PTCARPETGRAY or BLK

The Watson Racing carpet kit was designed for simple installation using existing mounting holes. The kit includes hard-board panels wrapped/stitched in carpet and vinyl, for a nice professional appearance. The lower panels will support light objects, but was not intended to support any large or heavy objects. Placing large or heavy objects on these panels may deform or bend them, causing permanent damage! Watson Racing will not be responsible for any damage caused by such use.

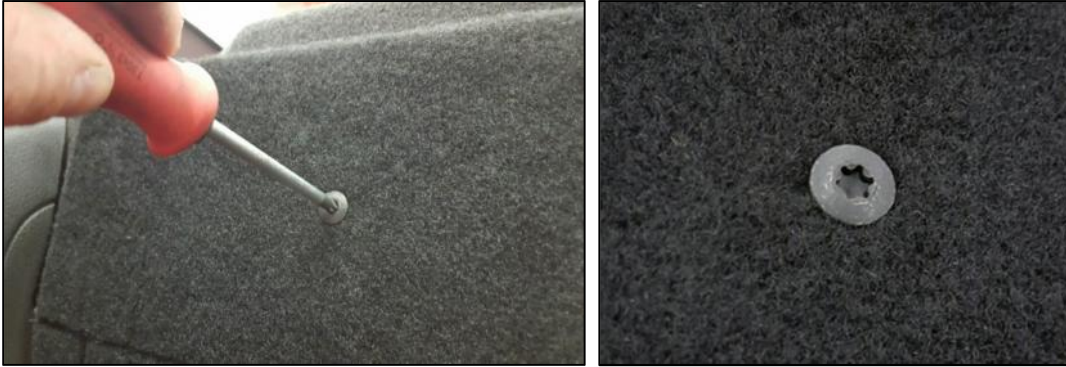
- 1) Install the rear (vertical) panel first. Remove the rear upper seat back latches from the car by un-bolting. Retain the latches and bolts for future re-installation.



- 2) Place rear vertical carpet kit panel in car. Install the provided bolts through the pre-cut holes in the carpet kit, and notice how they align with one of the open holes where each latch was located.



- 3) Start the bolts in each hole with your fingers and ensure alignment of panel and bolts. Use a T-30 Torx to tighten the bolts. **DO NOT OVERTIGHTEN!** Overtightening can cause permanent damage to the carpeted panel.



- 4) Push left/right sides of carpet panel back against plastic trim, and 'fold' the lower flap of carpet forward. If using the Watson carpet kit with the Watson 4-point roll bar, use the included template to trim around the base of the 4-point bar's diagonal tubes.



- 5) Install lower halves of carpet kit, starting with passenger side. Place panel all the way rearward in the car, and align forward push pin with hole identified in red circle, located at the front of the seat base 'riser'.



- 6) The carpet should have a hole for this push pin to pass through. Carefully feed pushpin through the carpet, and into the hole in the sheetmetal. Press or squeeze push pin into hole; do not force. If hole needs to be enlarged slightly, do so with the next size drill bit.



- 7) **Note:** Due to trim panel location variances from car to car, we've included some extra carpet material on the left/right outer edges of lower carpet panels. This extra material can be tucked under the side plastic trim panels for a clean appearance.
- 8) Repeat with driver's side panel. Join the two panels together in center using the high-strength velcro. Take your time with this, and starting from the front, work your way rearward, joining the two halves as straight as possible.



- 9) Enjoy your new Watson Racing Carpet Kit!



Thank you for choosing Watson Racing products! If you have any technical questions or comments, please call us at: 855-WATRACE (928-7223).