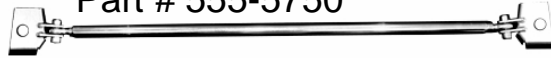


Steeda 2005 Mustang Rear Shock Tower Brace Installation Instructions

Part # 555-5750

NOTE:



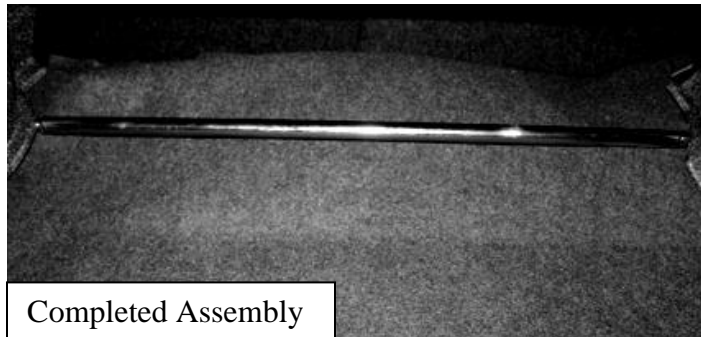
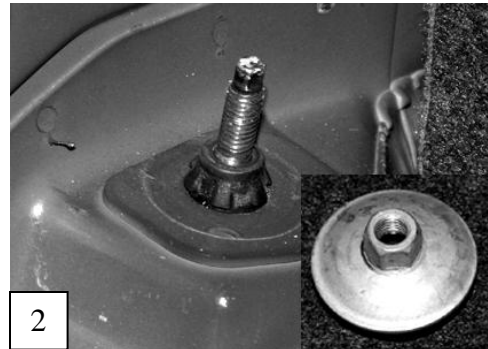
This Rear Shock Tower Brace cannot be used in conjunction with the factory Shaker 1000 stereo system. This installation requires welding of mounting brackets to the top of the shock towers. If you are not a competent welder do not attempt to perform this installation. The factory sheet metal is very thin and can be easily damaged if improper welding procedures are used. Additionally, there is a potential for fire when welding, A fire extinguisher should be readily available during this process. Before the welding process is started, be sure to disconnect the battery. Failure to do this can result in damage to the car's electronic systems.

1. Remove the two side inner trunk liners as well as the carpet.

This will reveal the rear shock towers. (Pic. 1)

2. Remove the flange nuts from both shocks assembly. (Pic.2)

3. Place the Rear Shock Tower Brace assembly over the exposed shock studs. Adjust the length of the brace until the holes on each of the new brackets are centered and evenly located around the shock studs. The edges of the brackets should be seated against the shock towers. Re-attach the flange nuts on both ends of the shock studs to hold the brackets in place while welding. Do not re-install the rubber grommet at this time. Scrap away any sealant that may be in the way of a proper weld seam.



4. Cover any exposed wiring. Any remaining carpet in the trunk area should be removed before beginning the welding process.

5. Re-check the fitment before welding the brackets to the shock towers. Be sure to weld completely around the bracket edges. (Pic 3)

6. Once welding is complete allow the area cool to the touch before replacing the inner panels and carpeting.

7. The carpet must be trimmed to fit around the new Rear Shock Tower Brace. Use a black marker or chalk to outline the carpet to be trimmed. A utility knife or scissors should be used to remove the excess carpeting. (Pic. 4)

8. Remove the flange nuts that were installed in Step 3. Reinstall the rubber grommets and flanges nuts.

This completes the installation.

Thank you for choosing STEEDA. Any questions and/or comments on these instructions

Please contact us at (954) 960-0774 or e-mail us at gofast@steeda.com