

## Installation Instructions for Down Pipe\* Ford Mustang EcoBoost PN-60559



These instructions have been written to help you with the installation of your Borla Performance Exhaust System. Please read this document completely before beginning the installation of your system.

Please compare the parts in the box with the bill of materials provided to assure that you have all the parts necessary for this installation.

To ensure this part number fits your specific model year, please visit our website for the latest model year listings at [www.BORLA.com](http://www.BORLA.com).

Thank you for purchasing a Borla Performance Down Pipe.

Borla Performance Down Pipe (PN-60559) is designed for the Ford Mustang EcoBoost equipped with a 2.3L Turbocharged 4-cylinder engine, automatic or manual transmissions.

60559 uses a performance 3" Y-Pipe designed to compliment Borla Cat-backs 140584 & 140585.

60559 removes front muffler of Cat-back 140583, resulting in a louder exhaust system.

**\*(Borla 60559) is designed for OFF-ROAD-USE ONLY.**

Borla Performance Industries recommends that an exhaust shop or professional after market parts installer perform the installation of this system. However, if you decide to perform the installation on your own it is recommended that two people are used. This installation should not be performed by one person due to the risk of injury. Ensure the installers use all under car safety precautions including eye protection.

*Please take time to read and understand the following...*

By installing your Borla Performance Down Pipe, you indicate that you have read this document and you agree with the terms stated below.

It is the responsibility of the purchaser to follow all installation instruction guidelines and safety procedures supplied with your Borla Performance Down Pipe.

Borla Performance Industries assumes no responsibility for damages occurring from misuse, abuse, improper installation, improper operation, lack of responsible care, or all previously stated reasons resulting from incompatibility with other manufacturer's products and/or systems.

Included with your Borla Performance Down Pipe is a warranty card. Please read it carefully before you begin any work on your vehicle. If you should have any questions regarding our warranty policy, installation, or any other matter pertaining to your new Borla Performance Down Pipe, please give us a call at the number provided on the warranty card.

**Minimum Required Tool List:**

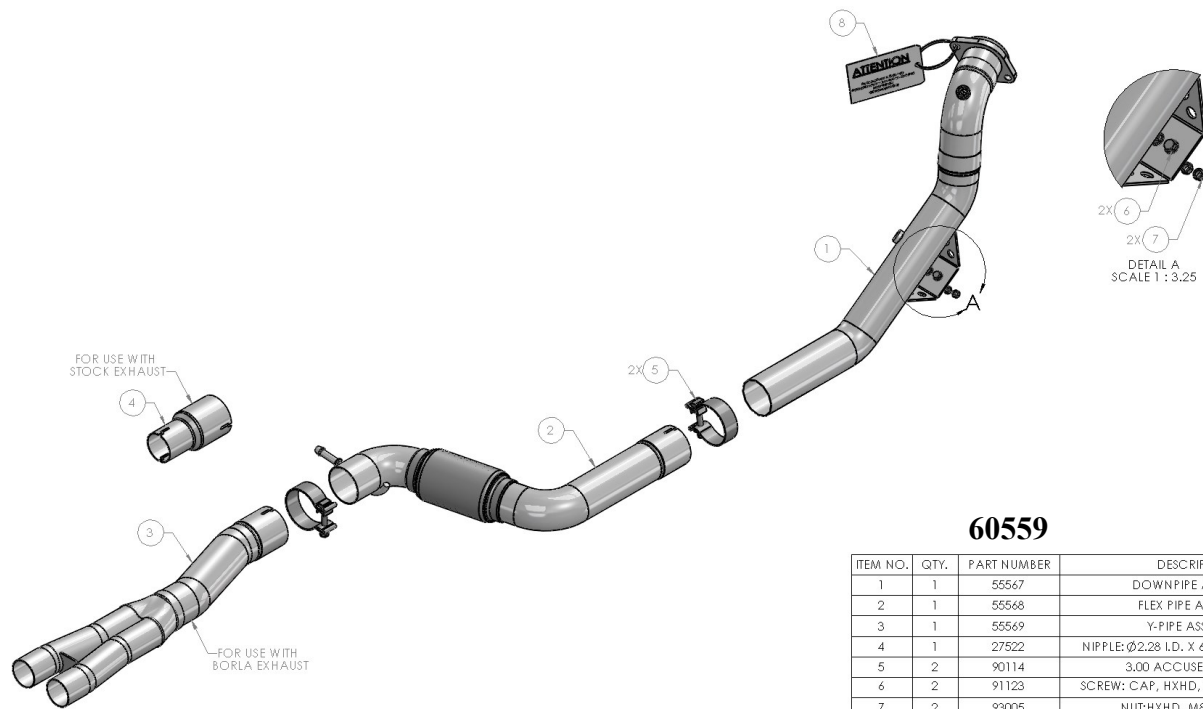
**TOOLS:**

- 1 3/8" Drive Ratchet
- 2 3/8" Drive Extension 3"
- 3 15mm Socket
- 4 13mm Socket
- 5 7/8 Wrench
- 5 Pry Bar

**SHOP SUPPLIES:**

- 1 Spray Lubricant

**Bill of Materials**



**60559**

ITEM NO.	QTY.	PART NUMBER	DESCRIPTION
1	1	55547	DOWNPIPE ASSEMBLY
2	1	55548	FLEX PIPE ASSEMBLY
3	1	55549	Y-PIPE ASSEMBLY
4	1	27522	NIPPLE: Ø2.28 I.D. X 6.00" LG. X 3.03 I.D.
5	2	90114	3.00 ACCUSEAL CLAMP
6	2	91123	SCREW: CAP, HXHD, M8 X 30MM, 1.25p
7	2	93005	NUT: HXHD, M8-1.25 PITCH
8	1	96240	OFF HIGHWAY USE ONLY DISCLAIMER

**Caution!!! Never work on a hot exhaust system. Serious injury in the form of burns can result** If the vehicle has been in use and the exhaust system is hot, allow vehicle to cool for at least 1 hour. Always wear eye protection when working under any vehicle.

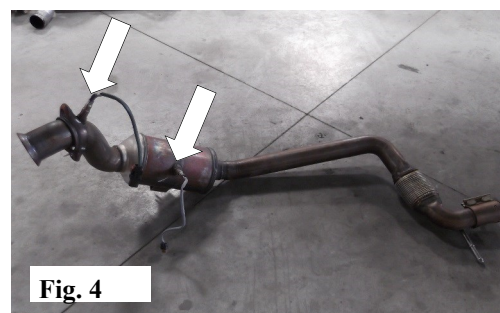
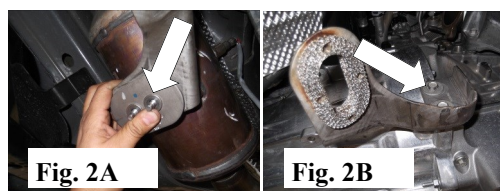
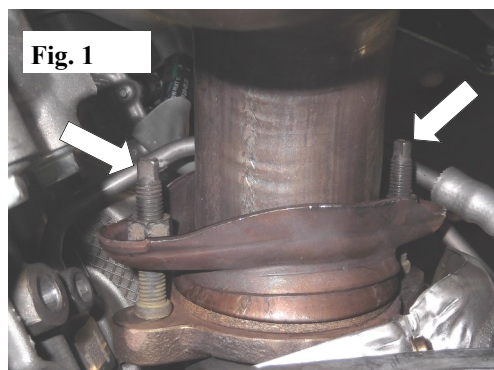
*Note: It is our recommendation that you use a hoist or hydraulic lift to facilitate the installation of your new Borla Performance Down Pipe.*

Taking all under car safety precautions, lift the vehicle using a hoist or hydraulic lift. Once this has been done, you may begin the removal of your old exhaust system from your vehicle.

## Original Down Pipe Removal

*Note: With a used vehicle, we suggest a penetrating spray lubricant to be applied liberally to all exhaust fasteners and allowing a significant period of time for the chemical to lubricate the threads before attempting to disassemble.*

1. Loosen and remove hardware connecting OE down pipe to exhaust. Use a muffler stand to support exhaust front pipe.
2. Loosen and remove the flange hardware in front of OE front pipe. Place the hardware and gasket aside for re-installation. (See Fig.1)
3. Lubricate all hangers and rubber isolators, bolts, and nuts.
4. Loosen and remove hardware using a 13mm socket, (See Fig. 2A)
5. Loosen (2) bolts on Bracket for more clearance, and disconnect O2 Sensors (See Fig. 2B)
6. Remove the down pipe assembly from the vehicle. (See Figs. 3 & 4)



**Warning:** Use extreme caution during installation. Torque all fasteners according to manufacturer's torque values and tightening sequence. **DO NOT** use air impact tools to tighten fasteners on Borla Performance Exhaust Systems. Use of such tools may result in bent flanges or gasket contact areas leading to exhaust leaks.

## Borla Performance Down Pipe Installation

1. Transfer and install OE O2 Sensor to 60559 **Downpipe Assembly**. (See Fig. 5)
2. Insert **Down Pipe Assembly** into position. Using the original hardware, secure the flange. **DO NOT TIGHTEN HARDWARE**. (See Figs. 6 & 7)
3. Place a clamp over the expanded end at the front of the **Flex Pipe Assembly** and insert end into **Down Pipe Assembly** inserting hangar into rubber isolator. Using the original hardware, secure the hangar support. **DO NOT TIGHTEN HARDWARE**. (See Fig. 8)
4. Place a clamp over the expanded end at the front of the **Y-Pipe Assembly** or **Nipple** (depending on exhaust used, refer to page 2) and insert end into **Flex Pipe Assembly**. Do not tighten the clamp. (See Fig. 8 & 9)
5. Install remaining exhaust system per manufacturer recommendations.
6. Check newly installed assembly for proper clearance under the vehicle.
7. Once position has been determined to be correct, tighten the Accuseal clamps to 32-35 ft. lbs. Tighten the flange hardware to 18-22 ft. lbs.
8. Before starting your vehicle, make sure to check all wires, hoses, brake lines, body parts and tires for safe clearance from the down pipe.

**Note:** When you first start your vehicle after the installation of your new Borla Performance Down Pipe, there may be some smoke and fumes coming from exhaust. This is a protective oil based coating used in the manufacturing of mandrel bent performance exhaust tubing. This is not a problem and will disappear within a very short period of time after the exhaust has reached normal operating temperatures.

